

MIL-C-26482 series I Filter Connectors

Description

- Interchangeable with MIL-C-26482 series I
- Quick bayonet coupling
- Various conductive plating
- With normal solder and PCB solder terminations
- Widely used in military and civil field

Main technical performance

[Mechanical]

—Shell: aluminum alloy/ stainless steel

—Plating:

B class: olive green cadmium plating S
class: stainless steel passive

L class: electroless nickel plating

—Insulator: thermosetting

—Grommet and seal: silicon rubber

—Endurance: 500 cycles

[Environmental]

—Operating temp.: -55°C ~ + 125°C

—Vibration: frequency 10~2000Hz
acceleration peak value : 196m/s²

—Shock: acceleration: 980m/s²

—Salt spray: 48h (nickel plating);
500h(cadmium plating); 1000h(stainless
steel passive)

[Electrical and Filtering]

—EMI filter frequency: 0.02MHz ~ 10GHz

—Rated voltage: 200V DC

—Withstanding voltage: 500VDC, no
flashover and breakdown in 5s

—Insulation resistance:

Normal \geq 1000 M Ω damp& heat \geq 100 M Ω

—Contact resistance and current rating

Contact size	Operating dia (mm)	Contact resistance (m Ω)	Rated current (A)
20 [#]	Φ 1.0	\leq 5	7.5
16 [#]	Φ 1.6	\leq 2.5	13

Ordering information

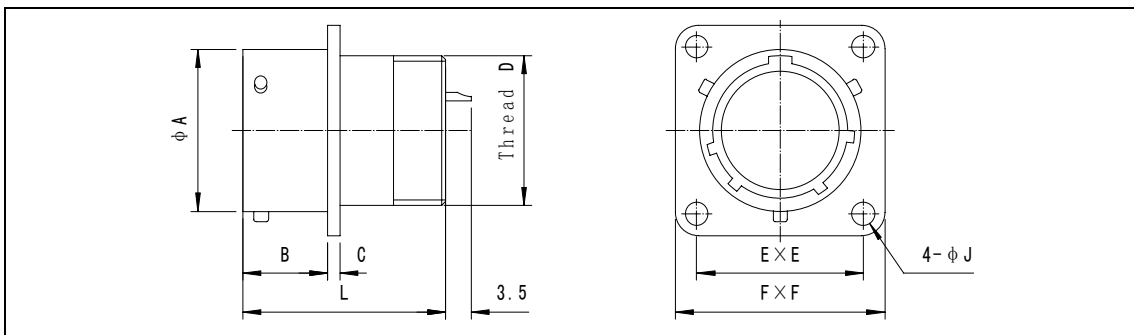
Basic series	LA	3112	B	18	-32	P	N	L	L	1	472
Type	3110-Wall-through square flange receptacle 3111-Cable connecting receptacle 3112-Box square flange receptacle 3114-Jam nut receptacle										
Shell Type	B-PCB R-Solder cup, without back shell										
Shell size	08-10-12-14-16-18-20-22-24										
Contact layout	See contact layout										
Contact	P-pin S-socket										

Polarization	N-normal; A/B/C/D-alternative
Shell plating	Omit-olive drab cadmium plating B-olive green cadmium plating S-stainless steel passive L-electroless nickel plating
Feature code	L- filter
Filter circuit type	1- type C 2- type π 3- type T

Outline Dimensions

[Wall-through square flange receptacle, R class]

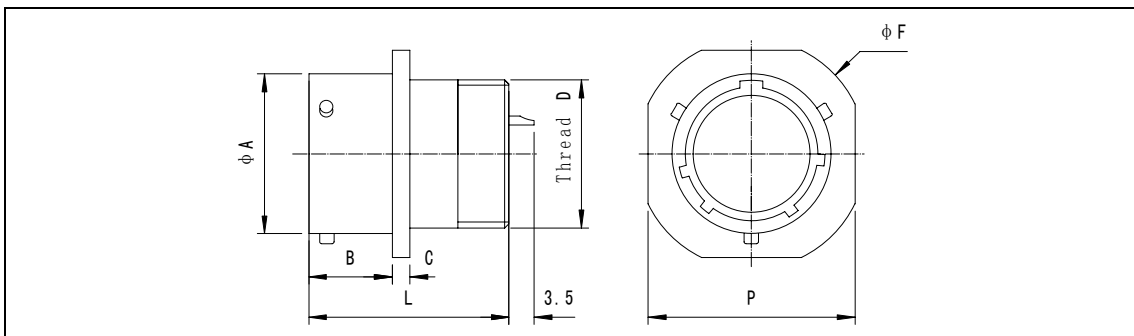
LA3110R



Shell size	L(Max)	A	B(Max)	C(Max)	E	F(Max)	J	Thread D screw UNEF-2A
08	28	12.04	11.7	1.7	15.09	20.99	3.2	0.4375-28
10	28	15.0	11.7	1.7	18.26	24.19	3.2	0.5625-24
12	28	19.07	11.7	1.7	20.62	26.54	3.2	0.6875-24
14	28	22.25	11.7	1.7	23.0	28.89	3.2	0.8125-20
16	28	25.43	11.7	1.7	24.61	31.29	3.2	0.9375-20
18	28	28.6	11.7	1.7	26.97	33.69	3.2	1.0625-18
20	28	31.78	14.3	2.5	29.36	36.89	3.2	1.1875-18
22	28	34.95	14.3	2.5	31.75	39.99	3.2	1.3125-18
24	28	38.13	15.2	2.5	34.92	43.15	3.8	1.4375-18

[Cable connecting receptacle, R class]

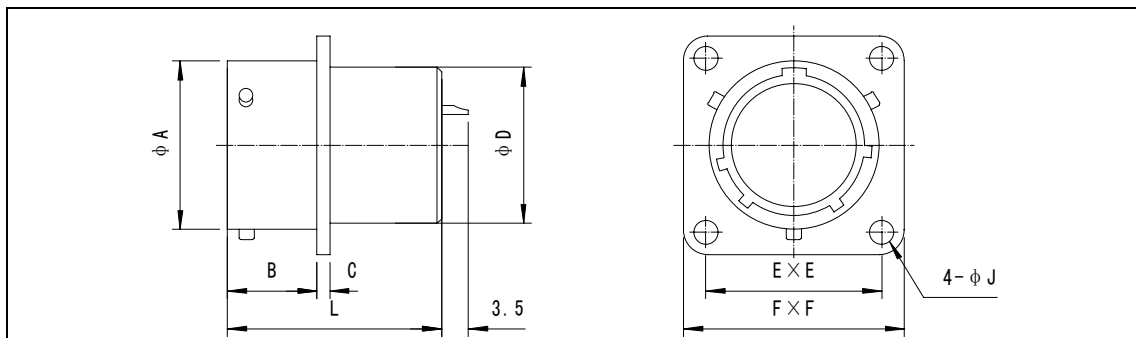
LA3111R



Shell size	L(Max)	A	B(Max)	C(Max)	F(Max)	P	Thread D UNEF-2A
8	28	12.04	10.6	2.4	24.24	20.99	0.4375-28
10	28	15.0	10.6	2.4	27.44	24.19	0.5625-24
12	28	19.07	10.6	2.4	29.79	26.54	0.6875-24
14	28	22.25	10.6	2.4	32.10	28.89	0.8125-20
16	28	25.43	10.6	2.4	34.59	31.29	0.9375-20
18	28	28.6	10.6	2.4	36.94	33.69	1.0625-18
20	28	31.78	13.8	2.9	40.14	36.89	1.1875-18
22	28	34.95	13.8	2.9	43.24	40.0	1.3125-18
24	28	38.13	14.7	2.9	46.44	43.29	1.4375-18

[Box square flange receptacle, R class]

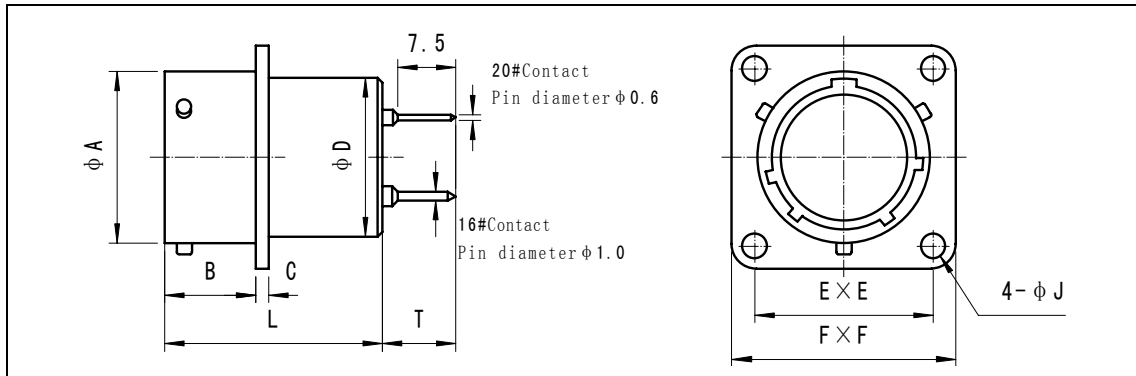
LA3112R



Shell size	L(Max)	A	B(Max)	C(Max)	D(Max)	E	F(Max)	J
08	28	12.04	11.7	1.7	10.84	15.09	20.99	3.2
10	28	15.0	11.7	1.7	13.99	18.26	24.19	3.2
12	28	19.07	11.7	1.7	17.37	20.62	26.54	3.2
14	28	22.25	11.7	1.7	20.57	23.0	28.89	3.2
16	28	25.43	11.7	1.7	23.72	24.61	31.29	3.2
18	28	28.6	11.7	1.7	26.69	26.97	33.69	3.2
20	28	31.78	14.3	2.5	29.89	29.36	36.89	3.2
22	28	34.95	14.3	2.5	33.04	31.75	39.99	3.2
24	28	38.13	15.2	2.5	36.24	34.92	43.15	3.8

[Box square flange receptacle, B class]

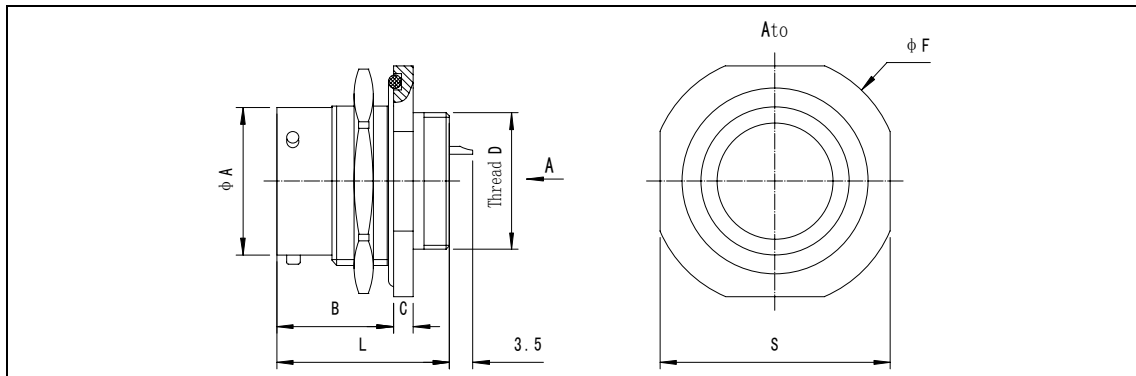
LA3112B



shell size	L(Max)	A	B(Max)	C(Max)	D(Max)	E	F(Max)	J
8	28	12.04	11.7	1.7	10.84	15.09	20.99	3.2
10	28	15.0	11.7	1.7	13.99	18.26	24.19	3.2
12	28	19.07	11.7	1.7	17.37	20.62	26.54	3.2
14	28	22.25	11.7	1.7	20.57	23.0	28.89	3.2
16	28	25.43	11.7	1.7	23.72	24.61	31.29	3.2
18	28	28.6	11.7	1.7	26.69	26.97	33.69	3.2
20	28	31.78	14.35	2.5	29.89	29.36	36.89	3.2
22	28	34.95	14.35	2.5	33.04	31.75	39.99	3.2
24	28	38.13	15.2	2.5	36.24	34.92	43.15	3.5

[Jam nut receptacle, R class]

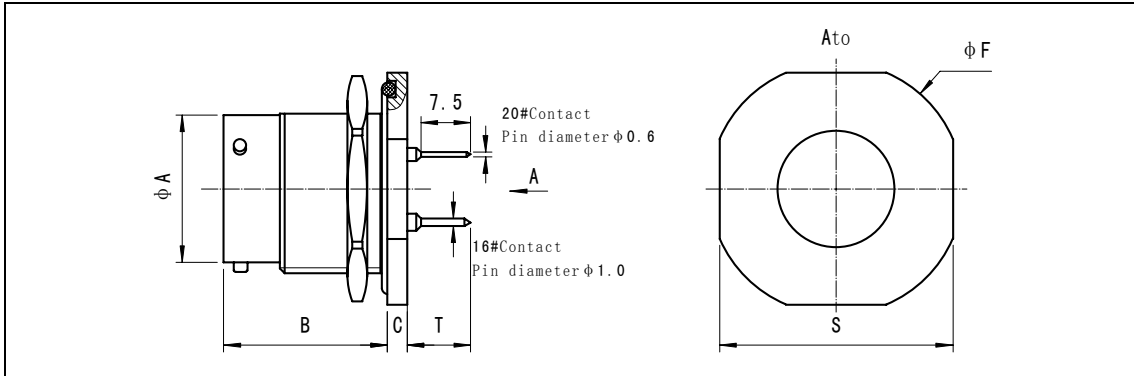
LA3114R



Shell size	L(Max)	A	B(Max)	C(Max)	F(Max)	S(Max)	Thread screw D UNEF-2A
8	28	12.04	17.9	3	26.94	23.94	0.4375-28
10	28	15.0	17.9	3	30.14	26.94	0.5625-24
12	28	19.07	17.9	3	34.94	31.74	0.6875-24
14	28	22.25	17.9	3	38.04	34.94	0.8125-20
16	28	25.43	17.9	3	41.24	38.24	0.9375-20
18	28	28.6	17.9	3	44.44	41.34	1.0625-18
20	28	31.78	22.4	3.8	49.14	46.04	1.1875-18
22	28	34.95	22.4	3.8	52.24	49.24	1.3125-18
24	28	38.13	23.3	3.8	55.54	52.74	1.4375-18

[Jam nut receptacle, B class]

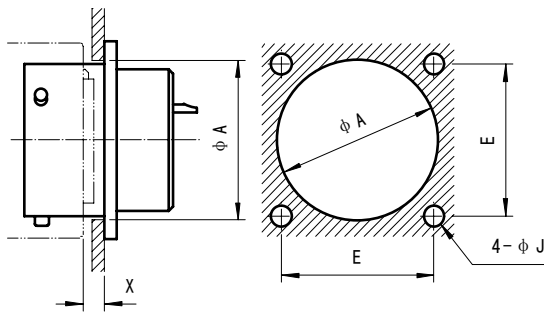
LA3114B



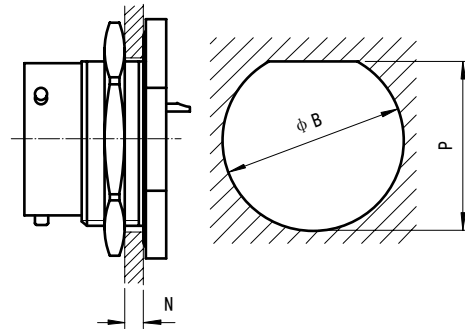
Shell size	A	B(Max)	C(Max)	T(Max)	F(Max)	S(Max)
8	12.04	25.2	2.8	9.46	26.94	23.94
10	15.0	25.2	2.8	9.46	30.14	26.94
12	19.07	25.2	2.8	9.46	34.94	31.74
14	22.25	25.2	2.8	9.46	38.04	34.94
16	25.43	25.2	2.8	9.46	41.24	38.24
18	28.6	25.2	2.8	9.46	44.44	41.34
20	31.78	24.5	3.5	8.49	49.14	46.04
22	34.95	24.5	3.5	8.49	52.24	49.24
24	38.13	24.5	3.5	7.79	55.54	52.74

Panel cut-out dimensions

Square plate mounting socket



Nut fastening socket



Shell number	A	E	J	X (Min)	B	P	N	
							(Min)	(Max)
8	15.55	15.09	3.2	2.9	14.60	13.75	1.8	5.7
10	18.80	18.26	3.2	2.9	17.75	16.95	1.8	5.7
12	22.15	20.62	3.2	2.9	22.50	21.50	1.8	5.7
14	25.30	23.00	3.2	2.9	25.70	24.20	1.8	5.7
16	28.45	24.61	3.2	2.9	28.85	27.35	1.8	5.7
18	31.65	26.97	3.2	2.9	32.05	30.55	1.8	5.7
20	34.80	29.36	3.2	5.5	35.20	33.70	1.8	8.6
22	38.00	31.75	3.2	5.5	38.40	36.90	1.8	9.6
24	41.20	34.92	3.8	5.5	41.55	40.05	1.8	9.5

Contact layout (front face of pin inserts illustrated)

08	33 3-20#	98 3-20#	2 2-20#	4 4-20#		
10	6 6-20#	98 6-20#				
12	10 10-20#	3 3-16#	8 8-20#	4 4-16#		
14	19 19-20#	18 18-20#	15 14-20# 1-16#	12 8-20# 4-16#	5 5-16#	4 4-12#
16	26 26-20#	23 22-20# 1-16#	8 8-16#			
18	32 32-20#	30 29-20# 1-16#	11 11-16#			
20	41 41-20#	24 24-20#	27 27-20#	39 37-20# 2-16#	16 16-16#	
22	55 55-20#	34 34-20#	32 32-20#	41 27-20# 14-16#	21 21-16#	
24	61 61-20#	31 31-16#				