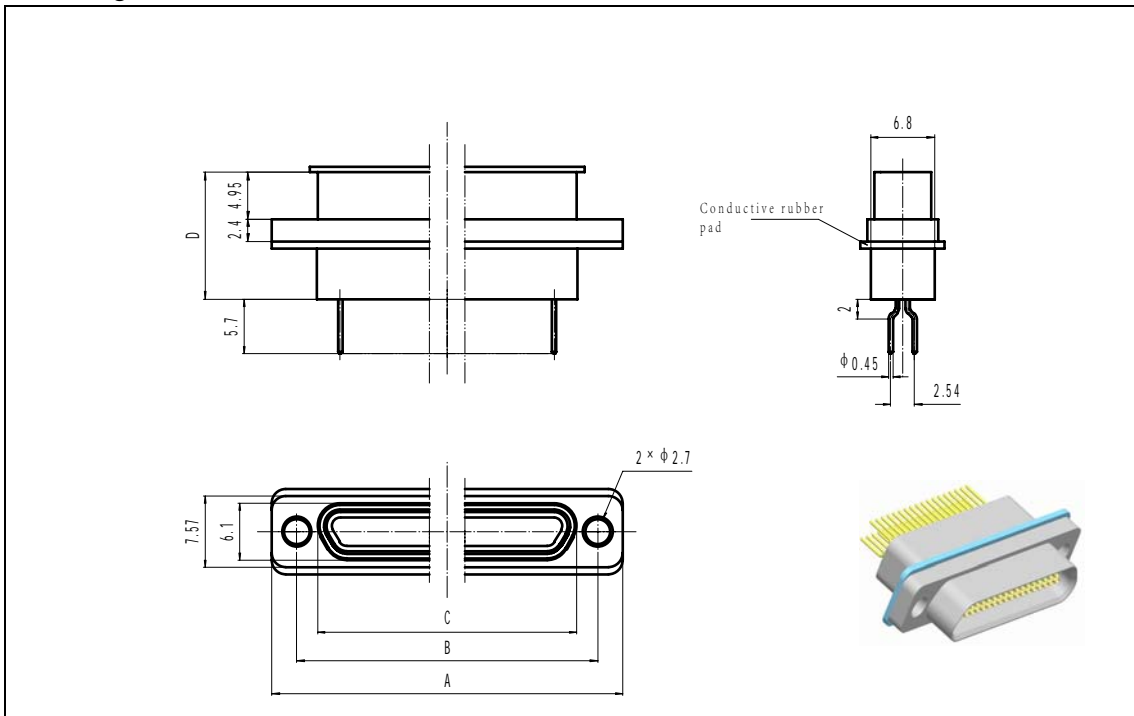
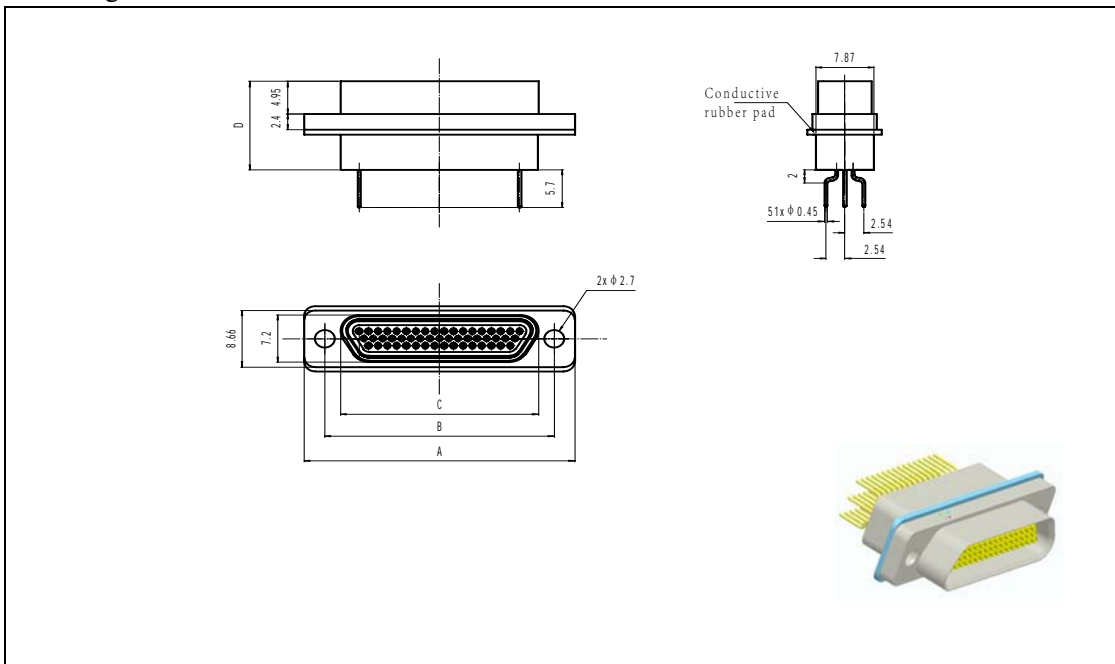


3. Straight PCB alternation with 9~37 cores



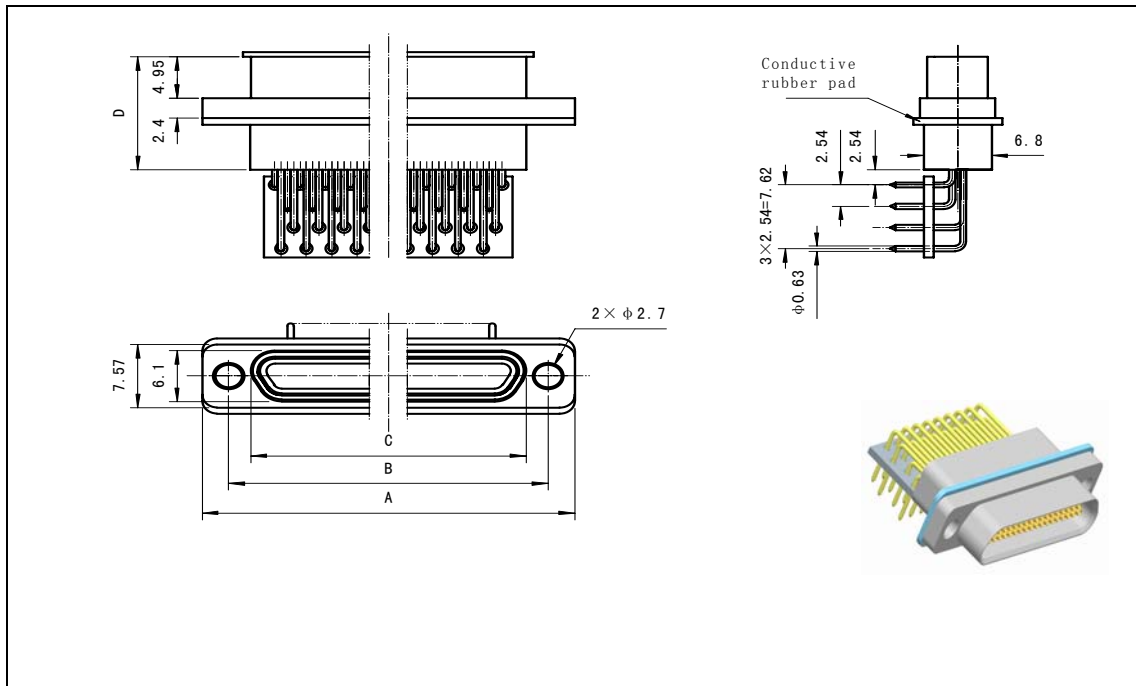
4. Straight PCB alternation with 51 cores



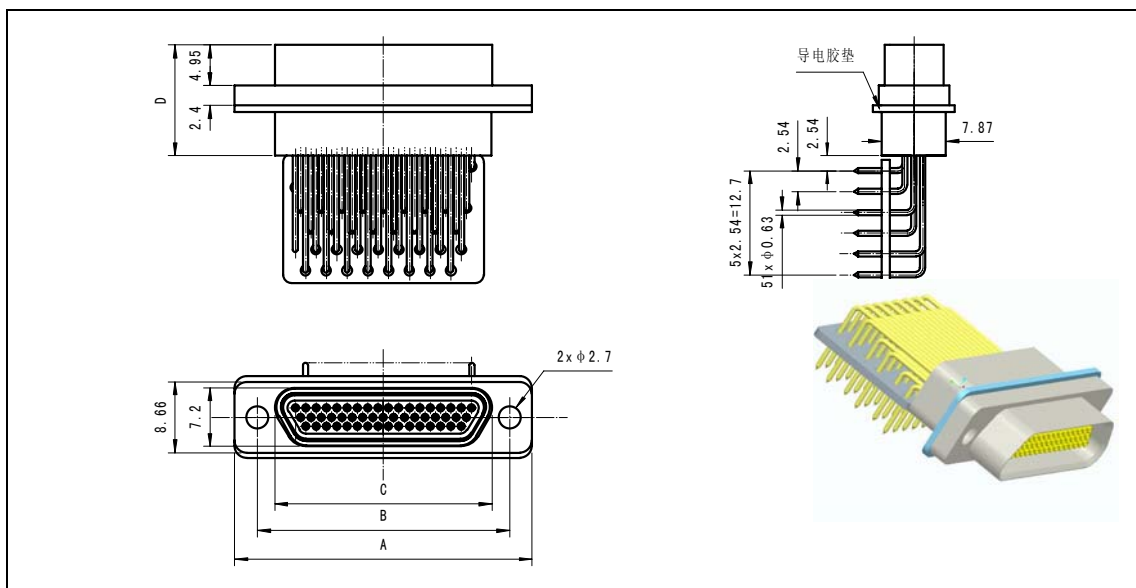
	Receptacle P/N	A	B	C	D
Straight PCB Type C	MDM52LN-9ZKN-Cx	19.68	14.35	10	13.5
	MDM52LN-15ZKN-Cx	23.5	18.2	13.7	13.5
	MDM52LN-21ZKN-Cx	27.4	21.97	17.5	13.5
	MDM52LN-25ZKN-Cx	29.84	24.51	20.05	13.5
	MDM52LN-31ZKN-Cx	33.66	28.32	23.9	13.5
	MDM52LN-37ZKN-Cx	37.46	32.13	27.7	13.5
	MDM52LN-51ZKN-Cx	36.4	30.86	26.6	13.5
	Receptacle P/N	A	B	C	D
Straight PCB Type П	MDM52LN-9ZKN-Px	19.68	14.35	10	18.6
	MDM52LN-15ZKN-Px	23.5	18.2	13.7	18.6
	MDM52LN-21ZKN-Px	27.4	21.97	17.5	18.6
	MDM52LN-25ZKN-Px	29.84	24.51	20.05	18.6
	MDM52LN-31ZKN-Px	33.66	28.32	23.9	18.6
	MDM52LN-37ZKN-Px	37.46	32.13	27.7	18.6
	MDM52LN-51ZKN-Px	36.4	30.86	26.6	18.6
	Receptacle P/N	A	B	C	D
Straight PCB alternation Type C	MDM52LN-9ZKN-J-Cx	19.68	14.35	10	13.5
	MDM52LN-15ZKN-J-Cx	23.5	18.2	13.7	13.5
	MDM52LN-21ZKN-J-Cx	27.4	21.97	17.5	13.5
	MDM52LN-25ZKN-J-Cx	29.84	24.51	20.05	13.5
	MDM52LN-31ZKN-J-Cx	33.66	28.32	23.9	13.5
	MDM52LN-37ZKN-J-Cx	37.46	32.13	27.7	13.5
	MDM52LN-51ZKN-J-Cx	36.4	30.86	26.6	13.5
	Receptacle P/N	A	B	C	D
Straight PCB alternation Type П	MDM52LN-9ZKN-J-Px	19.68	14.35	10	18.6
	MDM52LN-15ZKN-J-Px	23.5	18.2	13.7	18.6
	MDM52LN-21ZKN-J-Px	27.4	21.97	17.5	18.6
	MDM52LN-25ZKN-J-Px	29.84	24.51	20.05	18.6
	MDM52LN-31ZKN-J-Px	33.66	28.32	23.9	18.6
	MDM52LN-37ZKN-J-Px	37.46	32.13	27.7	18.6
	MDM52LN-51ZKN-J-Px	36.4	30.86	26.6	18.6

[Elbow PCB (alternation)filter receptacle]

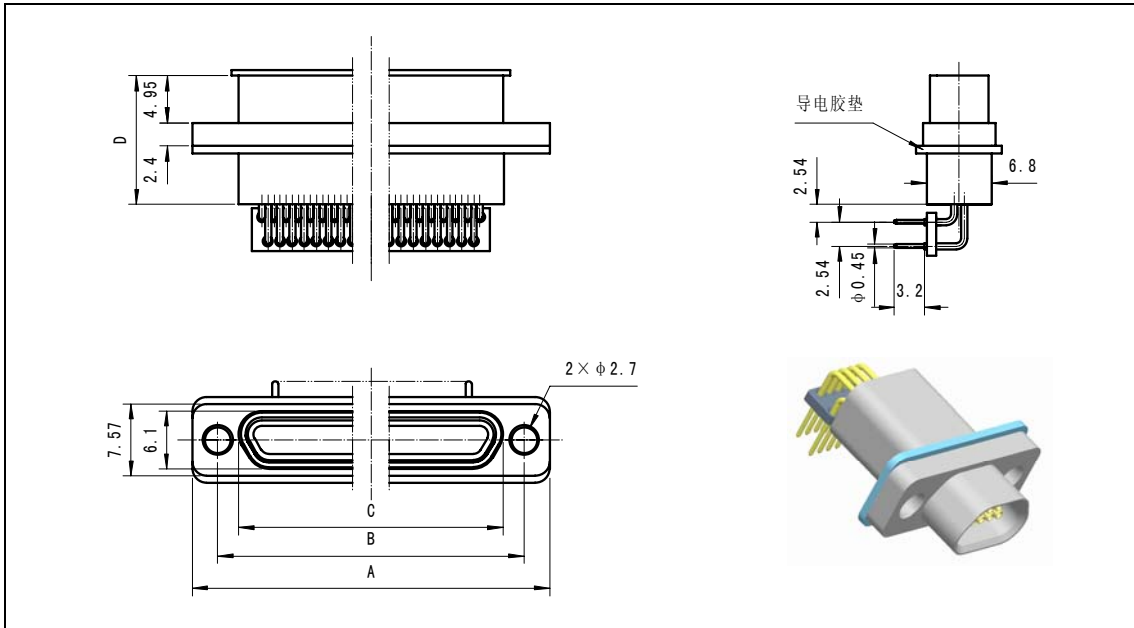
1. Elbow PCB with 9~37 cores



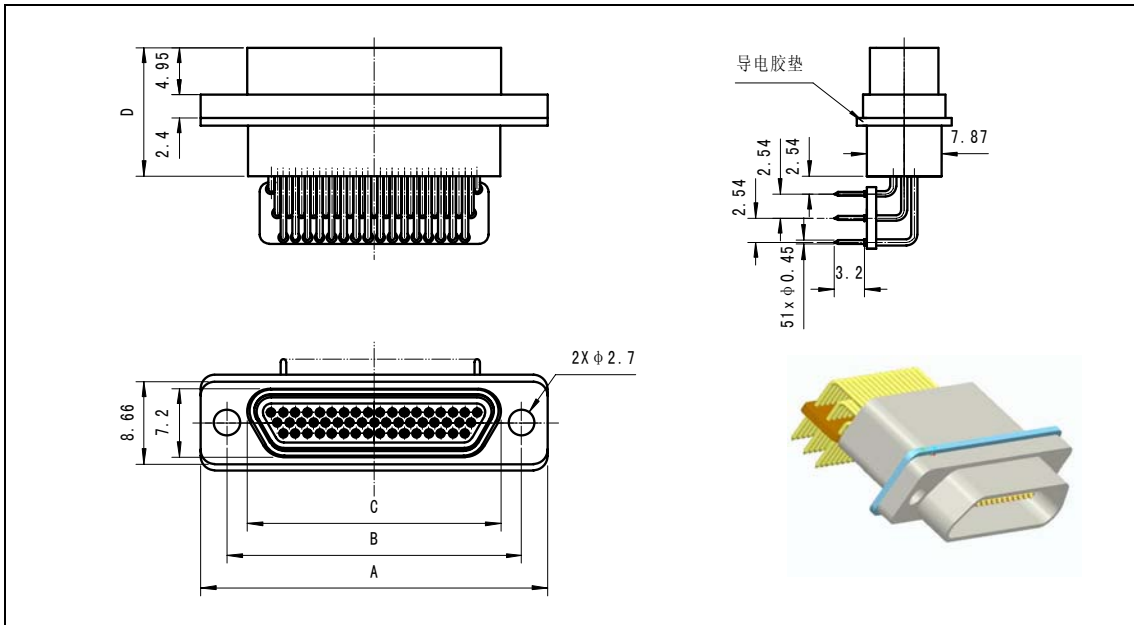
2. Elbow PCB with 51 cores



3. Elbow PCB alternation with 9~37 cores



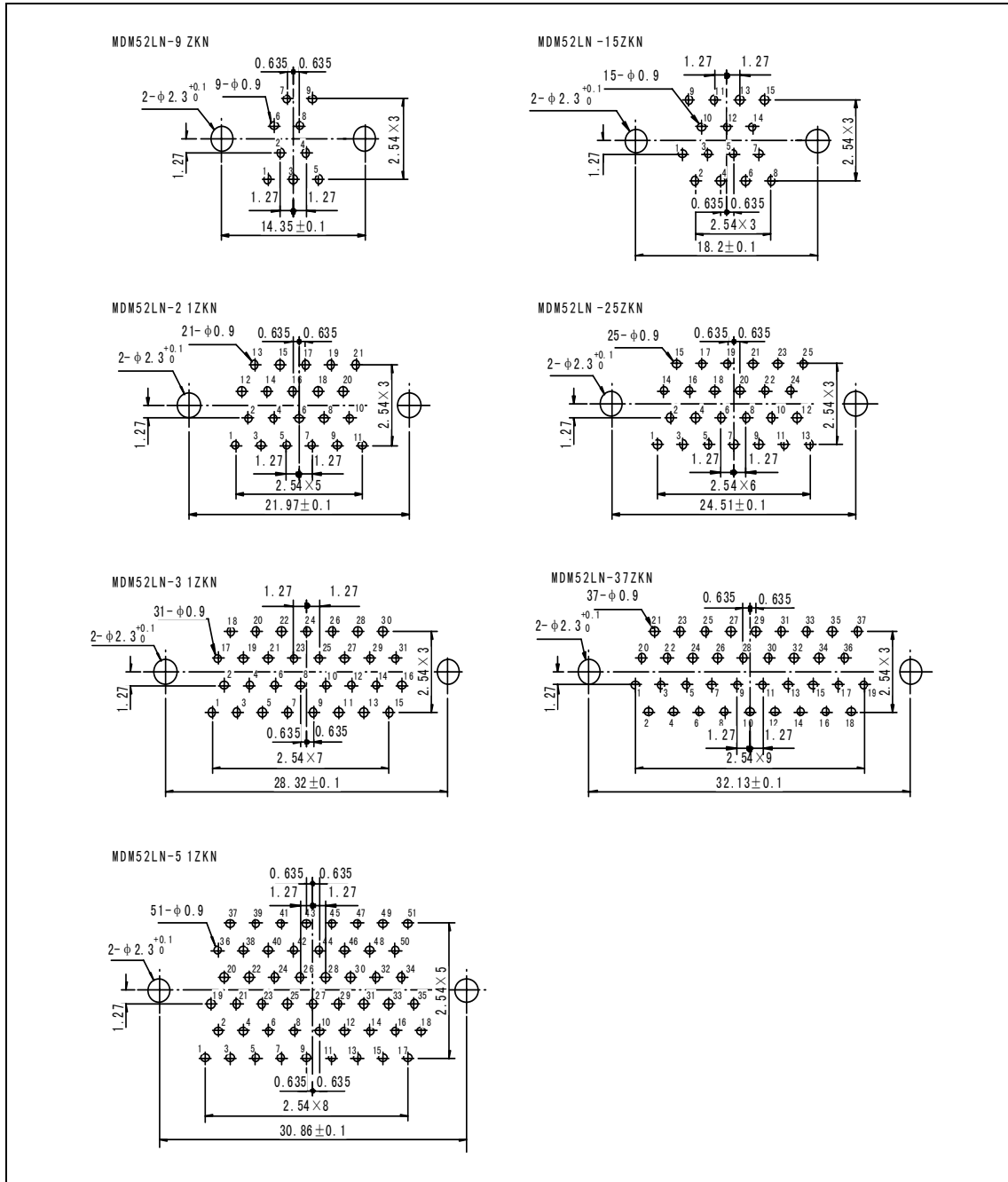
4. Elbow PCB alternation with 51 cores



	Receptacle P/N	A	B	C	D
Elbow PCB Type C	MDM52LN-9ZKW-C×	19.68	14.35	10	13.5
	MDM52LN-15ZKW-C×	23.5	18.2	13.7	13.5
	MDM52LN-21ZKW-C×	27.4	21.97	17.5	13.5
	MDM52LN-25ZKW-C×	29.84	24.51	20.05	13.5
	MDM52LN-31ZKW-C×	33.66	28.32	23.9	13.5
	MDM52LN-37ZKW-C×	37.46	32.13	27.7	13.5
	MDM52LN-51ZKW-C×	36.4	30.86	26.6	13.5
Elbow PCB Type II	MDM52LN-9ZKW-P×	19.68	14.35	10	18.6
	MDM52LN-15ZKW-P×	23.5	18.2	13.7	18.6
	MDM52LN-21ZKW-P×	27.4	21.97	17.5	18.6
	MDM52LN-25ZKW-P×	29.84	24.51	20.05	18.6
	MDM52LN-31ZKW-P×	33.66	28.32	23.9	18.6
	MDM52LN-37ZKW-P×	37.46	32.13	27.7	18.6
	MDM52LN-51ZKW-P×	36.4	30.86	26.6	18.6
Elbow PCB alternation Type C	MDM52LN-9ZKW-J-C×	19.68	14.35	10	13.5
	MDM52LN-15ZKW-J-C×	23.5	18.2	13.7	13.5
	MDM52LN-21ZKW-J-C×	27.4	21.97	17.5	13.5
	MDM52LN-25ZKW-J-C×	29.84	24.51	20.05	13.5
	MDM52LN-31ZKW-J-C×	33.66	28.32	23.9	13.5
	MDM52LN-37ZKW-J-C×	37.46	32.13	27.7	13.5
	MDM52LN-51ZKW-J-C×	36.4	30.86	26.6	13.5
Elbow PCB alternation Type II	MDM52LN-9ZKW-J-P×	19.68	14.35	10	18.6
	MDM52LN-15ZKW-J-P×	23.5	18.2	13.7	18.6
	MDM52LN-21ZKW-J-P×	27.4	21.97	17.5	18.6
	MDM52LN-25ZKW-J-P×	29.84	24.51	20.05	18.6
	MDM52LN-31ZKW-J-P×	33.66	28.32	23.9	18.6
	MDM52LN-37ZKW-J-P×	37.46	32.13	27.7	18.6
	MDM52LN-51ZKW-J-P×	36.4	30.86	26.6	18.6

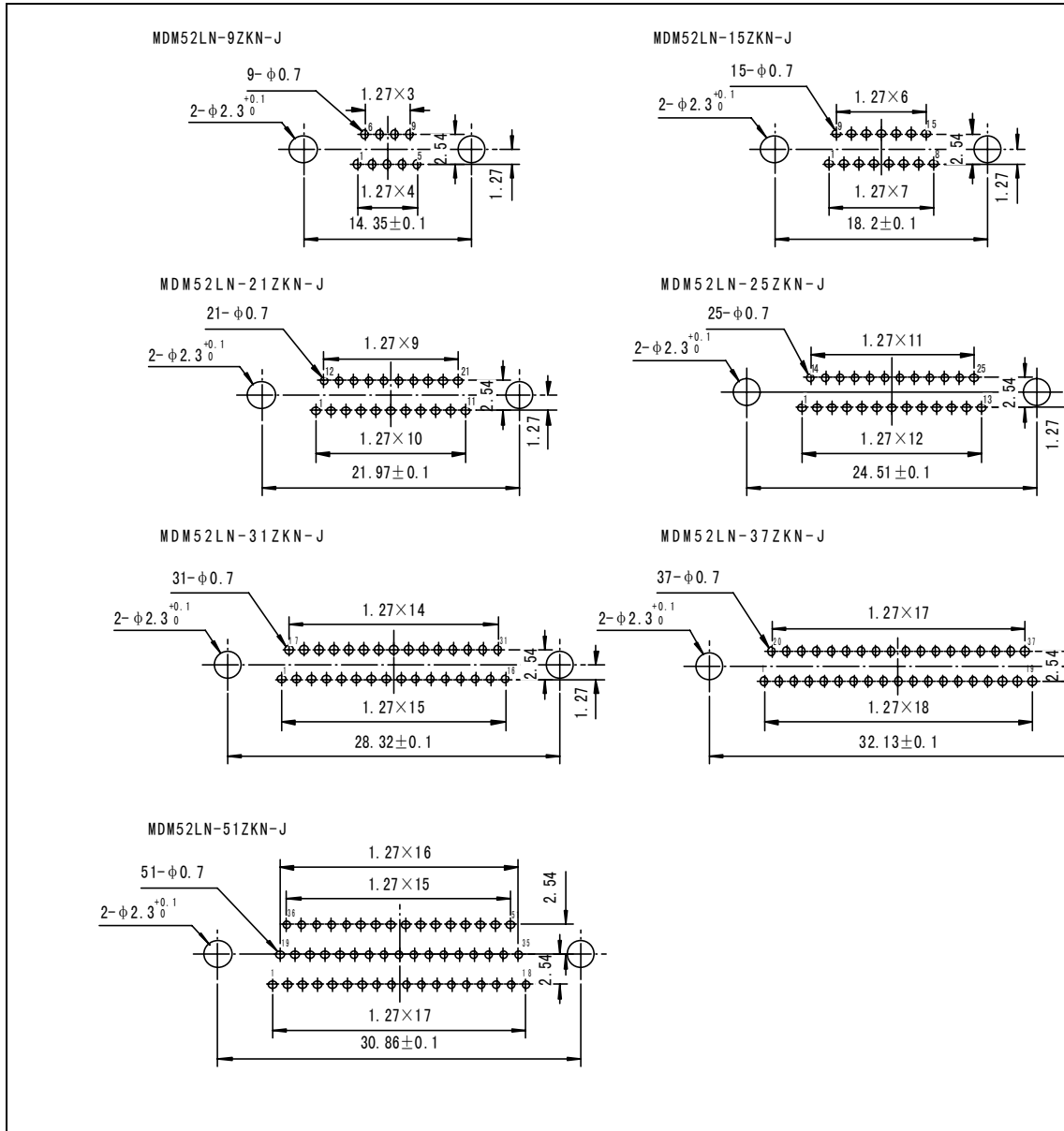
[PCB Cut-out Dimensions]

1. Cut-out dimensions straight PCB (grid space 2.54X2.54)
(View from the penetration end of PCB contact)



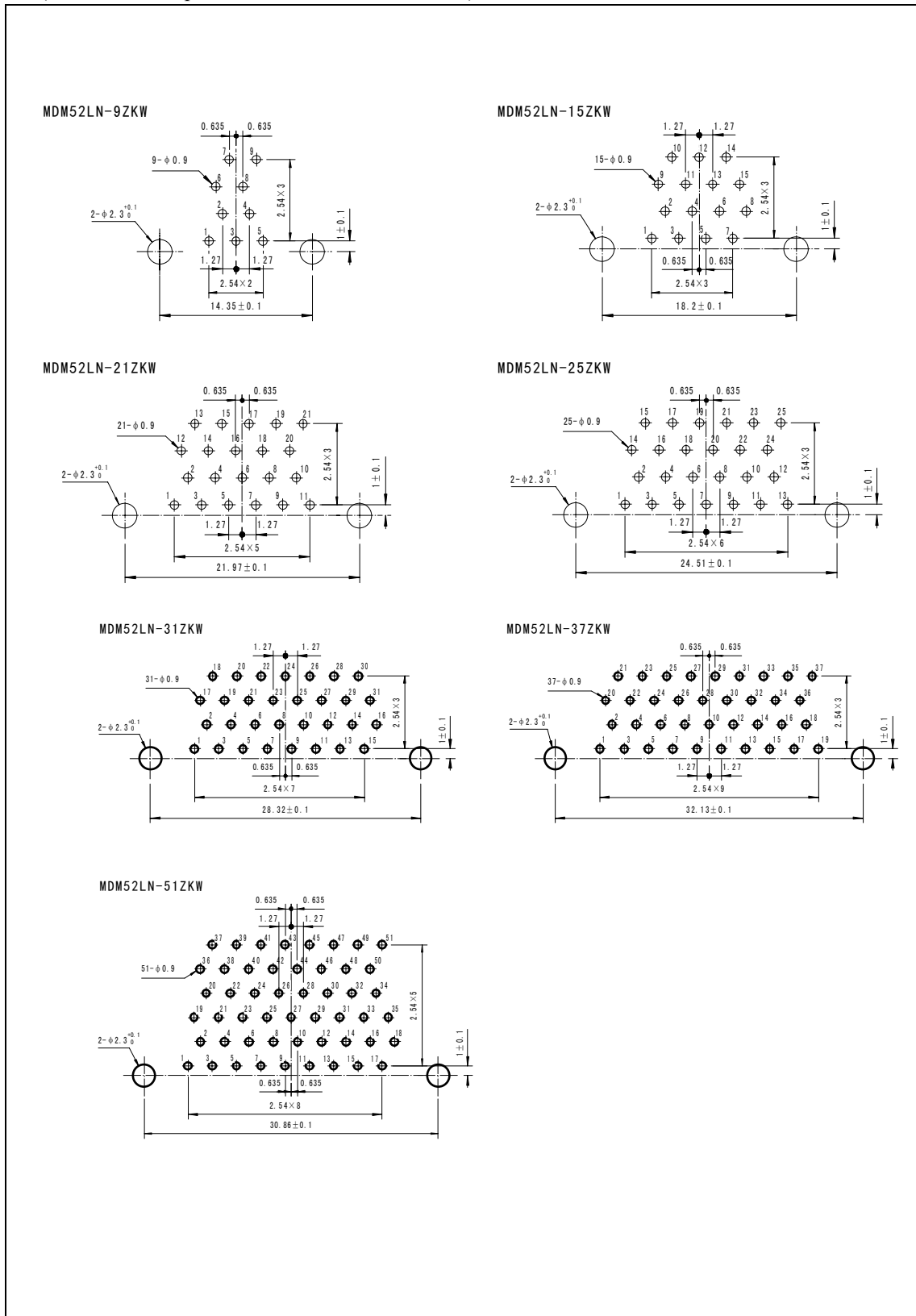
2. Straight PCB alternation cut-out dimensions (grid space 1.27X2.54)

(View from the penetration end of PCB contact)



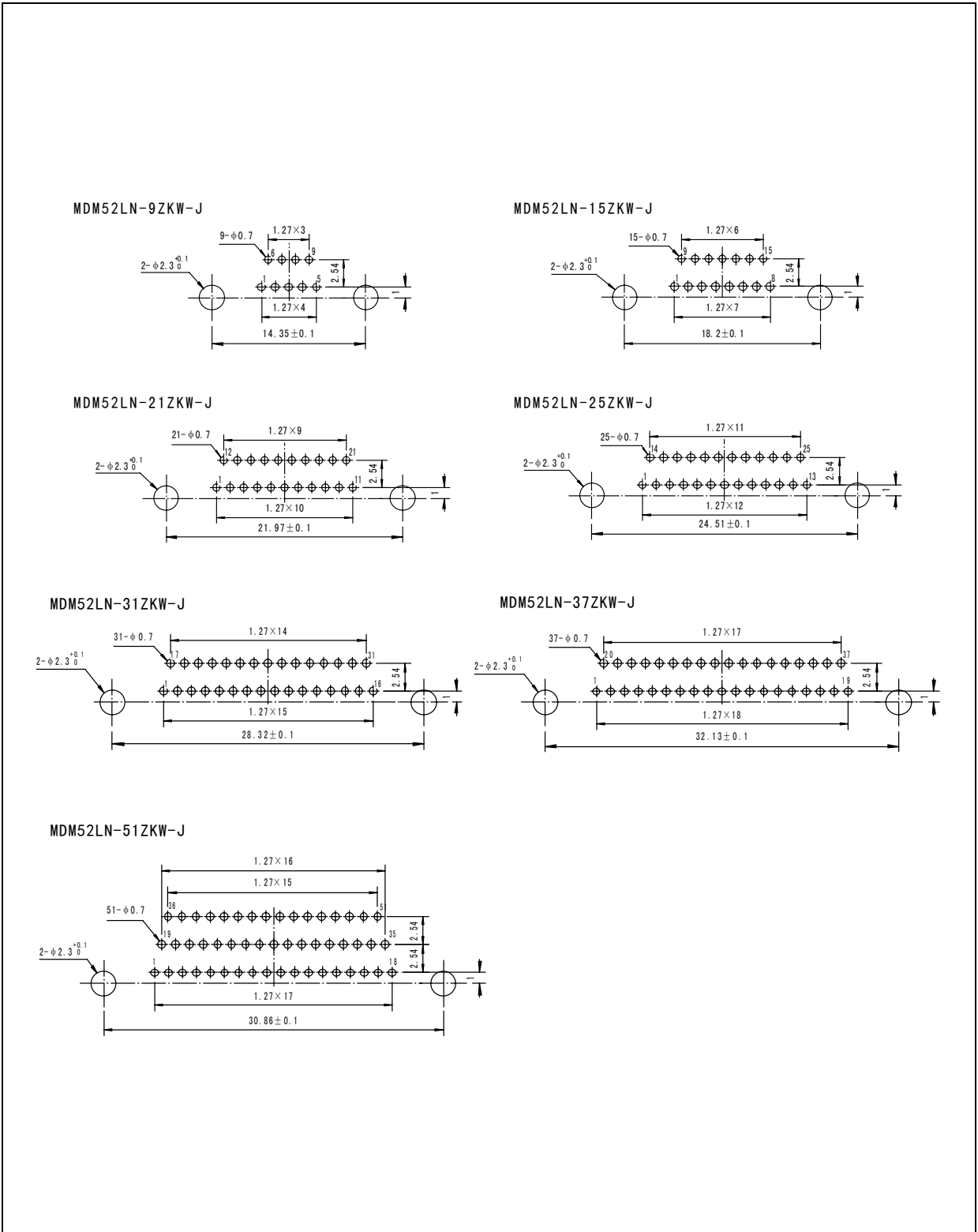
3. Elbow PCB cut-out dimensions (grid space 1.27X2.54)

(View from the penetration end of PCB contact)



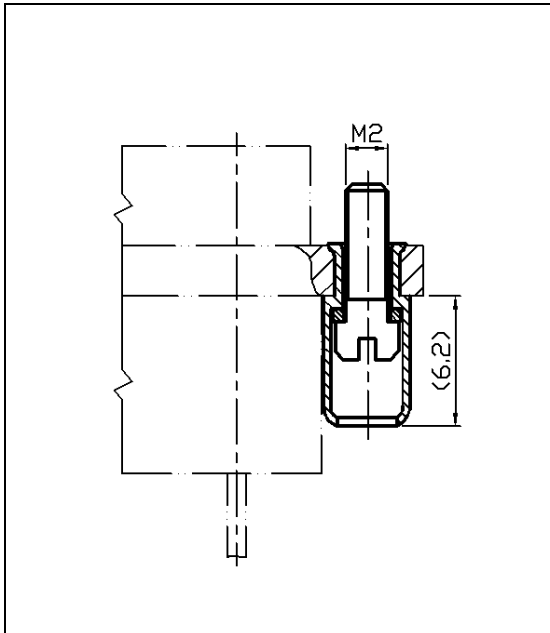
4. Elbow PCB alternation cut-out dimensions (grid space 1.27X2.54)

(View from the penetration end of PCB contact)

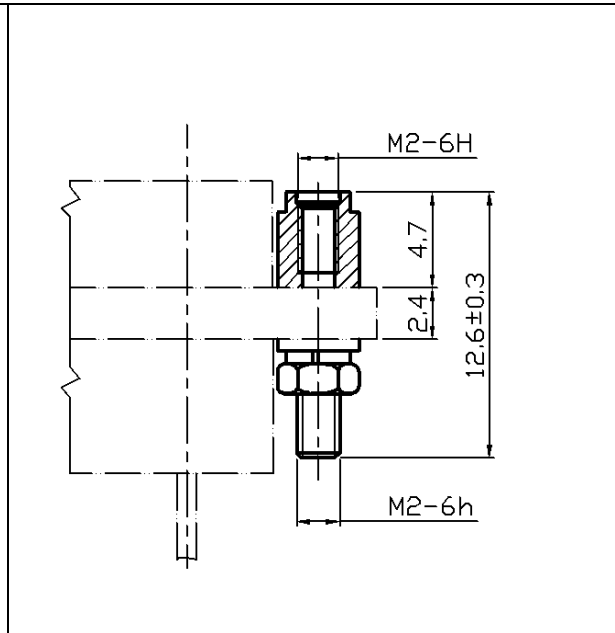


Locking accessory of connector

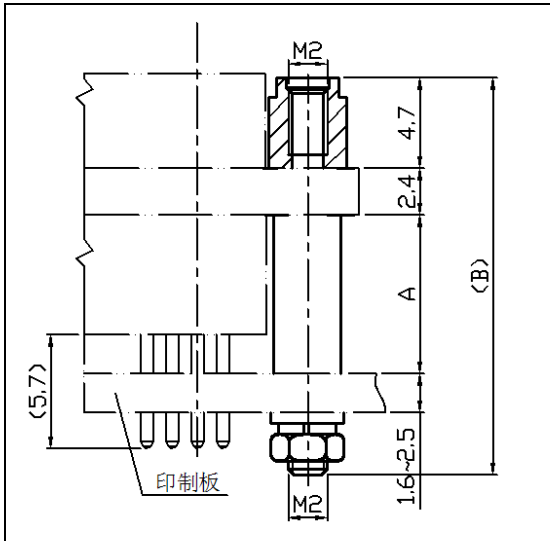
[Type L locking accessory]



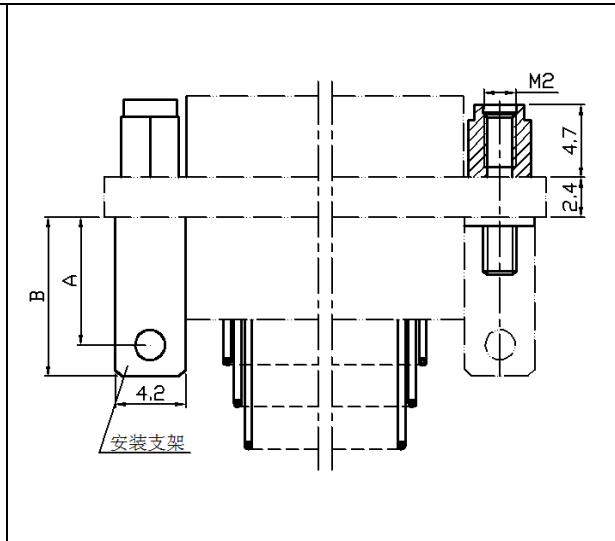
[Type P locking accessory]



[Type P5 locking accessory]



[Type P7 locking accessory]



Type of locking accessory	A		B		Type of locking accessory	B		A	
	Type C	Type II	Type C	Type II		Type C	Type II	Type C	Type II
P5	8.9	14	21.6	26.7	P7	9.6	14.7	7.7	12.8