

## MF9 series electric connectors

### Product Introduction

- Comply with GJB1438/3-2002
- Hyperboloid wire spring socket
- 2.54 standard grid gap
- Refer to the general specification of MIL-C-55302
- Termination form: PCB dip soldering, soldering etc.
- Screw thread guide pin, guide bushing with locking function
- Enterprise standard: 21E0.204.036JT

### Main technical performance

—Voltage rating: 250V	— operating temperature: -55℃~+125℃
—withstanding voltage: 1500V	—relative humidity (RH): 40℃, 95%
—insulation resistance: normal	—Vibration: frequency 10~2000Hz,
temperature≥500MΩ, damp heat≥20MΩ	acceleration 147m/s <sup>2</sup>
—Contacts diameter: Φ0.76 mm	—Shock: Acceleration 980m/s <sup>2</sup>
—Contact resistance: ≤0.01Ω	—Endurance: 1000 cycles
—Current rating: 2 A	

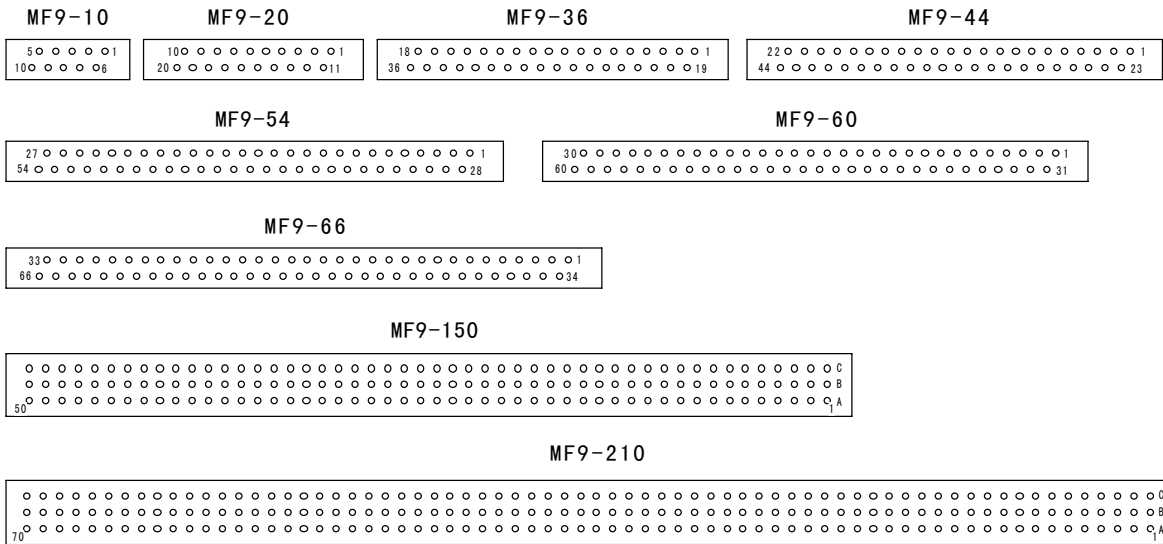
### Ordering Information

No.	Classify Characteristics	Classify contents	Mark
1	Basic series	PCB electrical connectors series I	MF9
2	Structure type	Plug( with pin)	T
		Receptacle( with socket)	Z
3	Number of contacts	20, 36, 44, 54, 60, 66, 150, 210	marked number
4	Termination form	PCB dip soldering straight	B
		PCB dip soldering elbow	W
		Wire soldering	H
5	Plating	gold plating	J
		silver plating	no mark
6	Remodel products	-01, -02,...	marked number

### Type marking example

Contacts number: 20, plug: dip soldering elbow, receptacle: dip soldering straight, plating: gold, code of the plug: MF9T20WJ, code of the receptacle: MF9Z20BJ, type of the electrical connector: MF9Z20BJ/WJ

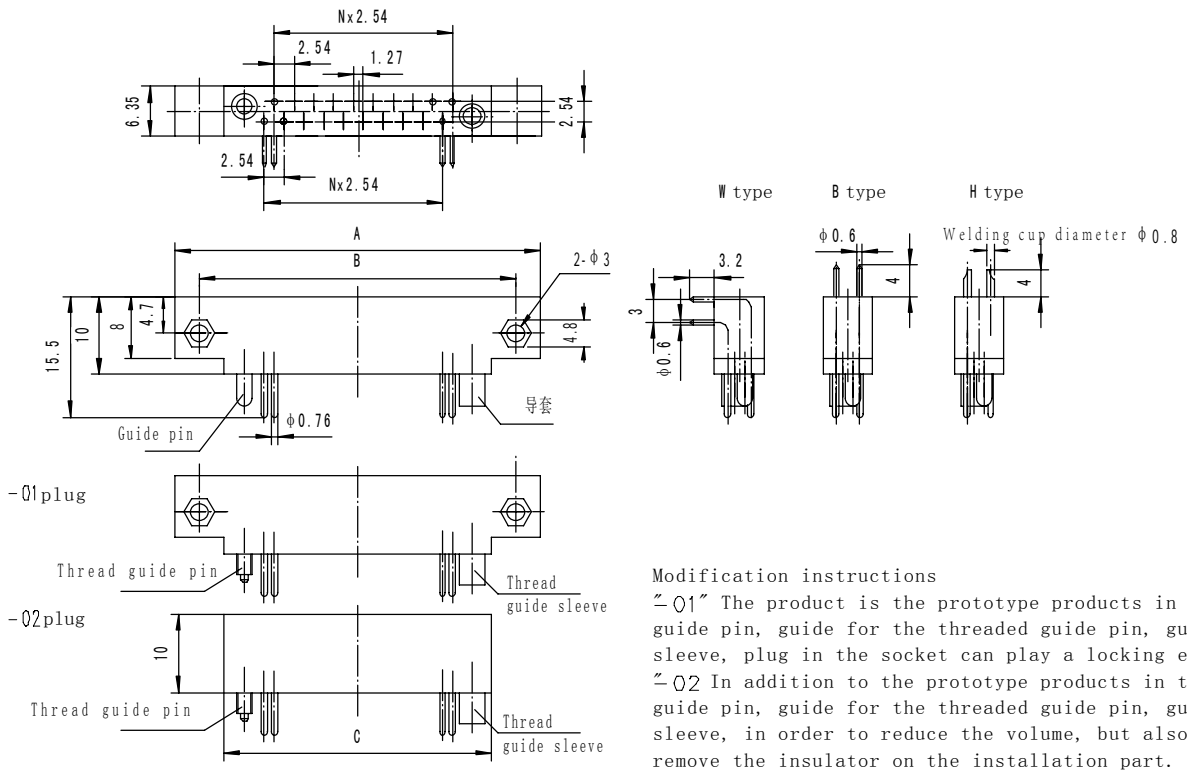
### Contact layout (front face of pin inserts illustrated)



Outline dimensions

[ 2 rows of contacts ]

Plug



Modification instructions  
 ~01 The product is the prototype products in the guide pin, guide for the threaded guide pin, guide sleeve, plug in the socket can play a locking effect;  
 ~02 In addition to the prototype products in the guide pin, guide for the threaded guide pin, guide sleeve, in order to reduce the volume, but also to remove the insulator on the installation part.

Note: MF9T60WJ-01 is different from“-01”in other products, the left is guide bushing, the right is guide pin.

Cores	Plug type	A	B	C	N
10	MF9T10WJ-01	34.5	27.94	21.6	4
20	MF9T20WJ	47.0	40.6	34.3	9
	MF9T20WJ-01				
	MF9T20BJ				
	MF9T20BJ-01				

	MF9T20WJ-02	67.6	61.0	54.8	17
	MF9T20BJ-02				
	MF9T20HJ-02				
	MF9T36WJ				
36	MF9T36WJ-01	67.6	61.0	54.8	17
	MF9T36WJ-02				
	MF9T36BJ-01				

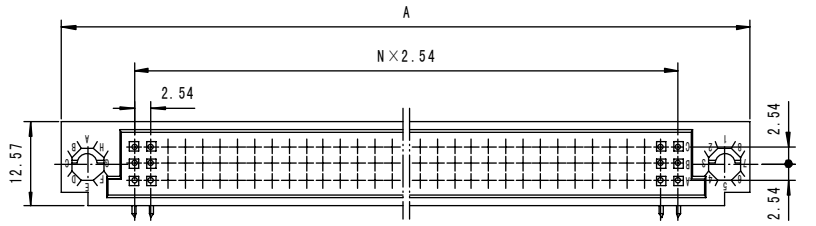


	MF9T36BJ-02				
	MF9T36HJ-01				
	MF9T36HJ-02				

Cores	Plug type	A	B	C	N
44	MF9T44WJ	77.6	71.1	65.0	21
	MF9T44WJ-01				
	MF9T44WJ-02				
	MF9T44BJ-01				
	MF9T44BJ-02				

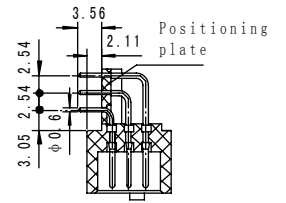
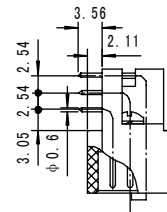
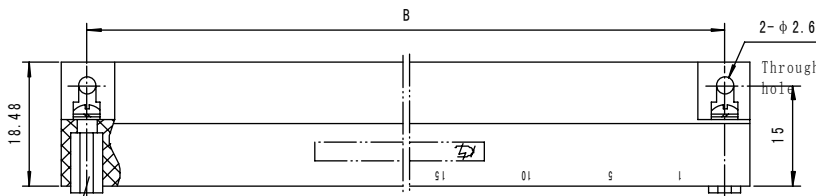
54	MF9T44HJ-02	90.3	83.8	77.6	26
	MF9T54WJ				
	MF9T54BJ-02				
	MF9T54HJ				
60	MF9T60WJ	98.0	91.5	85.3	29
	MF9T60BJ				
	MF9T60HJ-01				
	MF9T60HJ				
66	MF9T66WJ	105.6	99.1	93.0	32
	MF9T66WJ-01				
	MF9T66WJ-02				
	MF9T66BJ-02				
	MF9T66HJ-02				





MF9 T 1 5 0 W J  
MF9 T 2 1 0 W J

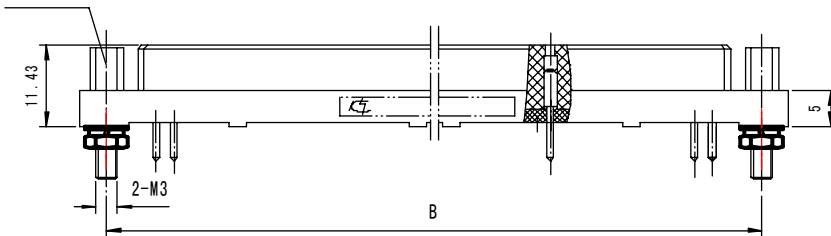
MF9 T 1 5 0 W J - 0 3



Plug recognition kit

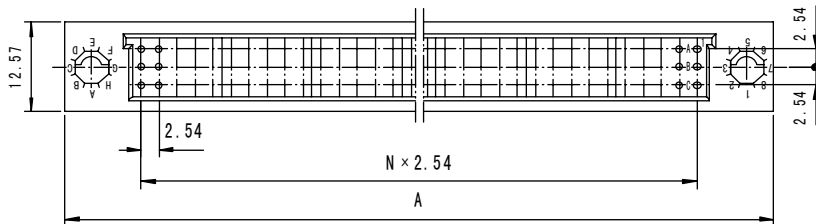
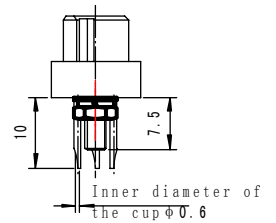
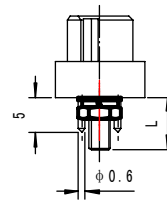
### Receptacle MF9Z150BJ, MF9Z150BJ-03, MF9Z150HJ, MF9Z210BJ

Socket identification set



MF9 Z 1 5 0 B J  
MF9 Z 1 5 0 B J - 0 3  
MF9 Z 2 1 0 B J

MF9 Z 1 5 0 H J



MF9Z150BJ	L=7.5
MF9Z210BJ	
MF9Z150BJ-03	L=11.5

Type	A	B	N
MF9-150	146.05	138.43	49
MF9-210	196.85	189.23	69

Note : The plug and receptacle with same cores can match arbitrarily.