



APMA

CW8942F15

Nickel-plated sleeve

Technical Information

March 2020

1. Explanation

Standard: Q/21EJ6166 "EN4165 Series Connector Product Specification"

2. Dimensions (dimensions without units marked, the default unit is mm)

2.1 Dimensions of Nickel Plated Sleeve

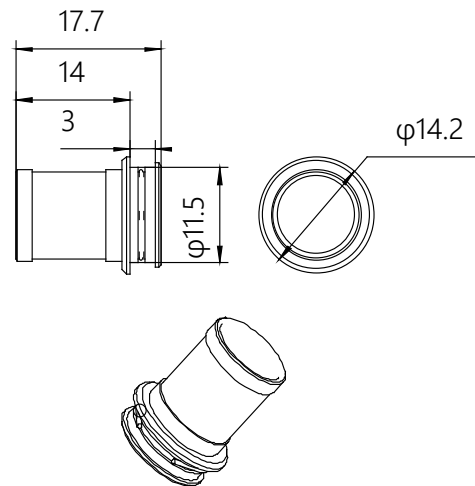


Figure 1 Nickel-plated sleeve

3. Technical specifications

3.1 Electrical performance

Table 1 Performance Index

Serial number	Type	Initial value (mΩ)	After environmental test (mΩ)
1	Electrical continuity between enclosures	2	4

Note: After the test refers to the mechanical life, vibration, shock and other tests

3.2 Mechanical and environmental performance requirements

Table 2 Mechanical and environmental performance indicators

Item	Skills requirement
Operating temperature	-55℃~+175℃
Mechanical life	500 times
Vibration	The power spectral density is 0.4G2/Hz, and each direction is 8 h in three mutually perpendicular directions.
Salt spray	Test according to GJB1217A-2009 regulations, 96 hours of neutral salt spray

4. Acceptance requirements

Table 3 Acceptance requirements

Item	Skills requirement	Sampling requirements
Appearance and size	The sleeve marks are correct, clear and complete, no loose parts, no bumps in appearance, and the external dimensions meet the requirements of Figure 1.	100%

5. Order information

Nickel-plated sleeve: CW8942F15;

Adaptation tail accessories: CW8942F14P2, CW8942F14P4,
CW8942F14R2, CW8942F14R4, etc.;

6. Other information

none.