

R75 Series Subminiature Rectangular Electrical Connectors

Product brief introduction

- Metallic shell
- Contact spacing 1.91mm, row spacing 1.65mm
- Plug with elastic twisted wire pins and with receptacle rigid sockets
- Number of contacts: 9, 15, 21, 25, 31, 37 for two-row; 51,66 for three-row
- Various locking devices and rear end cable clamp optional
- According to shell mounting flange width, plug and receptacle are classified as:
General(wide) – A type(narrow) and -A1 type
(width between general and A type)
- Various types of termination: crimp, soldering, Straight PCB and Right angle PCB
- Product Implemented enterprise standard:
R75C Series Implemented enterprise standard: Q/21EJ657
R75O Series Implemented enterprise standard:



Q/21EJ750 Main technical performances

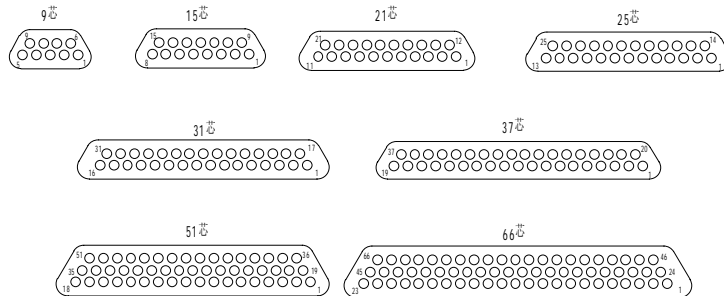
- Operating temperature: $-55^{\circ}\text{C} \sim +125^{\circ}\text{C}$
- vibration: 10~2000 Hz, 196 m/s^2
- shock: 1200 m/s^2 , 6ms
- Rated current: 5A
- insulation resistance: $\geq 5000 \text{ M}\Omega$
- Withstanding voltage: 1500 V DC
- durability: 500 cycles
- hermetic parameters (Applicable for J29M Series Product)
Watertight: differential pressure of one bar, no air bubble during inspection in water
Hermetic: $1 \times 10^{-1} \text{ Pa}\cdot\text{cm}^3/\text{s}$ (differential pressure of one bar)

Product classifications

Class	Sub-class	Basic mark	Remark
R75CGeneral type	Crimp Series	R75C-xZK ^{TJ} ...	
	Soldering Series	R75C-xZK ^{TJ} H...	
	Straight PCB Series	R75C-xZK ^{TJ} N...	PCB gridding 1.91×1.65
	Right angle PCB W Series	R75C-xZK ^{TJ} W...	PCB gridding 1.91×2.54
	Right angle PCB WI Series	R75C-xZK ^{TJ} WI...	PCB gridding 3.82×2.54
R75C-A	Crimp Series	R75C-xZK ^{TJ} ...-A	
	Soldering Series	R75C-xZK ^{TJ} H...-A	

	Right angle PCB W Series	R75C-xZK ^{TJ} W...-A	PCB gridding 1.91×2.54
	Right angle PCB WI Series	R75C-xZK ^{TJ} WI...-A	PCB gridding 3.82×2.54
R75C-A1	Crimp Series	R75C-xZK ^{TJ} ...-A1	
	Soldering Series	R75C-xZK ^{TJ} H...-A1	
R75O (hermetic)	Crimp Series	R75O-x ZK ^{TJ} ...	
	Soldering Series	R75O-xZK ^{TJ} H...	

Contact arrangements (View from matching surface of insulator with pins)



Designation

R75C - 15 TJ H L - A1 D2
 1 2 3 4 5 6 7

- 1 Basic series: R75C
- 2 Contact Number of contacts: 9, 15, 21, 25, 31, 37, 51, 66
- 3 Connector and Contact types:
TJ - Plug with pins; ZK - Receptacle with sockets
- 4 Contact termination type: Blank - crimp; H - soldering;
N- Straight PCB (1.91×1.65 gridding)
W- Right angle PCB (1.91×2.54 gridding)
WI - Right angle PCB (3.82×2.54 gridding)
- 5 locking devices type: see "R75C locking devices".
- 6 Shell modification: Blank - General Series;
A- shell mounting flange width equal to the end
A1 shell mounting flange width between General type and A type
- 7 Accessory type: D-with built-in cable clamp, Applicable for General Crimp and Soldering Series Product
D1- without built-in cable clamp, Applicable for General Crimp Series Product
D2- with built-in cable clamp, Applicable for -A1 Crimp and Soldering Series Product

Order instruction

(1) If users have no special requirements on the crimped products, size, color and length of wires applicable for R75C series are AFR-250-0.15-250V, White, L=250mm; If users have special

R75O - 15 TJ H P5
 1 2 3 4 5

- 1 Basic series: R75O (O stands for hermetic)
- 2 Contact Number of contacts:
9, 15, 21, 25, 31, 37, 51, 66
- 3 Connector and Contact types:
TJ - Plug with pins;
ZK - Receptacle with sockets
- 4 Contact termination type:
Blank - crimp;
H - soldering;
- 5 locking devices type:
Only use P5 locking devices.

requirements on wires, indicate them after part numbers of plug or receptacle in the format below:

- 1) Plug and receptacle part numbers: do not change the original part numbers;
- 2) Wire section: directly indicate wire section, if omitted, 0.15mm²;
J29A Series Product, only applicable for wire gauge
- 3) Wire Color: Directly indicate wire Color. if omitted, White;
- 4) Wire Length: Wire length protruded from shell end face, in mm, if omitted, 250mm;
- 5) Outer wire protection: “P” stands for wire bundles wrapped by light anti-wave sleeve; and “F” stands for wire bundles wrapped by polyamide silk sleeve (olive green); “PF” stands for wire bundles wrapped by light anti-wave sleeve and polyamide silk sleeve (olive green)

For example 1: if user orders R75C-25TJL-A Product, requires wire is AFR-250-0.2, White, Length is 0.6m, ordering P/N: R75C-25TJL-A (0.2L600) .

For example 2: if user orders R75C-25TJL Product, requires wire is AFR-250-0.2, red, Length is 0.6m, wire bundles wrapped by polyamide silk sleeve, ordering P/N: R75C-25TJL (0.2 red L600F) .

For example 3: if user orders R75C-25TJL1-A1D2 Product, requires wire is AFR-250-0.2, red, Length is 0.6m, wire bundles wrapped by anti-wave sleeve and polyamide silk sleeve, ordering P/N: R75C-25TJL1-A1D2 (0.2 red L600PF) .

Note: the designation above is only for wrapped wires with same color, section, length and temperature resistant degree of 250°C, withstanding voltage of 250V (AFR wires)

(2) Other special requirements(such as beyond wire sizes specified in the catalogue and different cavity wiring requirements), users shall communicate with our technicians and confirm the wiring requirements in the contract.

Other product order instruction

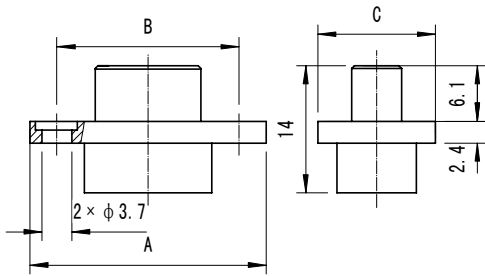
(3) Plug or Receptacle with “D” “D1” “D2” in its part number, only suitable for L, L1~L3 and P1 locking devices.



Dimensions

R75C General Crimp Series

Plug R75C-9, 15, 21, 25, 31, 37, 51, 66TJ



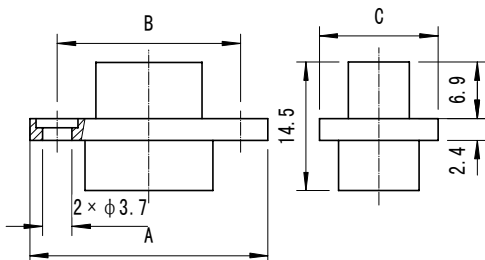
R75C-25TJ



R75C-51TJ

P/N	A	B	C
R75C-9TJ	26.1	20.1	13
R75C-15TJ	31.6	25.6	13
R75C-21TJ	37.3	31.3	13
R75C-25TJ	42	36	13
R75C-31TJ	47.8	41.8	13
R75C-37TJ	53.5	47.5	13
R75C-51TJ	52	46	14.6
R75C-66TJ	61.5	55.5	14.6

Receptacle R75C-9, 15, 21, 25, 31, 37, 51, 66ZK



R75C-25ZK



R75C-51ZK

P/N	A	B	C
R75C-9ZK	26.1	20.1	13
R75C-15ZK	31.6	25.6	13
R75C-21ZK	37.3	31.3	13
R75C-25ZK	42	36	13
R75C-31ZK	47.8	41.8	13
R75C-37ZK	53.5	47.5	13
R75C-51ZK	52	46	14.6
R75C-66ZK	61.5	55.5	14.6

Mounting cutout dimensions

Product mounting cutout dimensions see "R75 Series Product mounting cutout dimensions".

R75C General Soldering Series



R75C-25TJH



R75C-51TJH



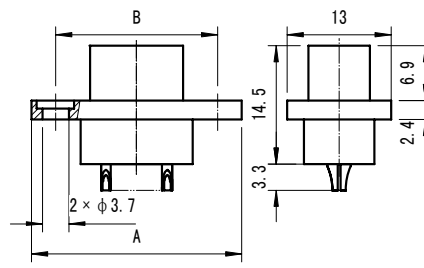
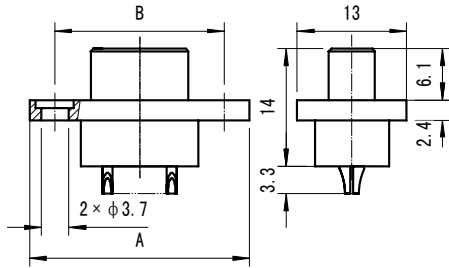
R75C-25ZKH



R75C-51ZKH

Plug R75C-9, 15, 21, 25, 31, 37TJH

Receptacle R75C-9, 15, 21, 25, 31, 37ZKH

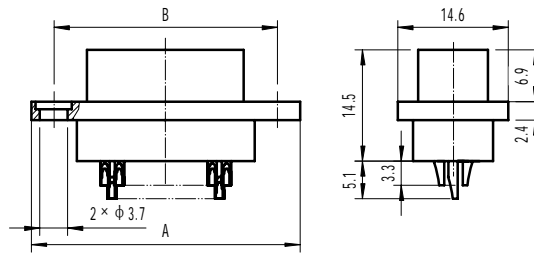
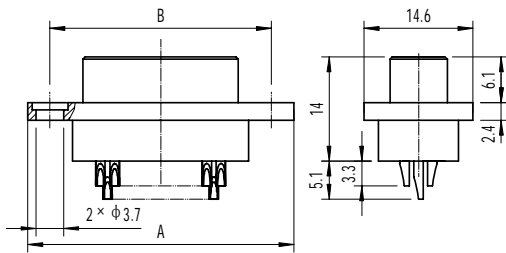


P/N	A	B
R75C-9TJH	26.1	20.1
R75C-15TJH	31.6	25.6
R75C-21TJH	37.3	31.3
R75C-25TJH	42	36
R75C-31TJH	47.8	41.8
R75C-37TJH	53.5	47.5

P/N	A	B
R75C-9ZKH	26.1	20.1
R75C-15ZKH	31.6	25.6
R75C-21ZKH	37.3	31.3
R75C-25ZKH	42	36
R75C-31ZKH	47.8	41.8
R75C-37ZKH	53.5	47.5

Plug R75C-51, 66TJH

Receptacle R75C-51, 66ZKH



P/N	A	B
R75C-51TJH	52	46
R75C-66TJH	61.5	55.5

P/N	A	B
R75C-51ZKH	52	46
R75C-66ZKH	61.5	55.5

Mounting cutout dimensions

Product mounting cutout dimensions see "R75 Series Product mounting cutout dimensions".

R75C General Straight PCB N Series (PCB gridding 1.91×1.65)



R75C-25TJN



R75C-51TJN



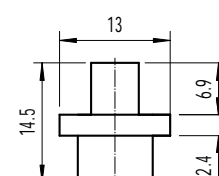
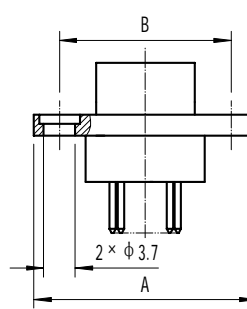
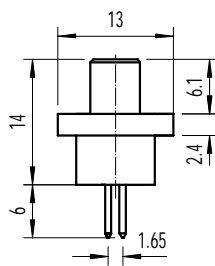
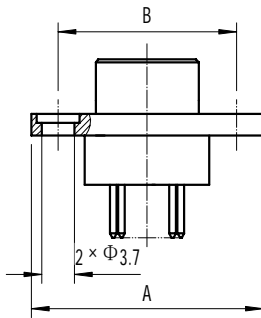
R75C-25ZKN



R75C-51ZKN

Plug R75C-9, 15, 21, 25, 31, 37TJN

Receptacle R75C-9, 15, 21, 25, 31, 37ZKN

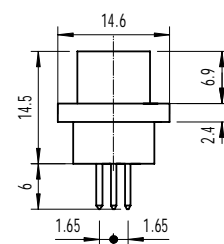
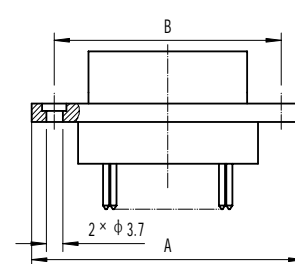
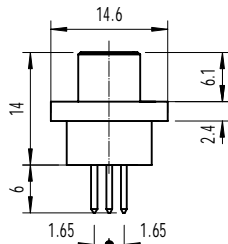
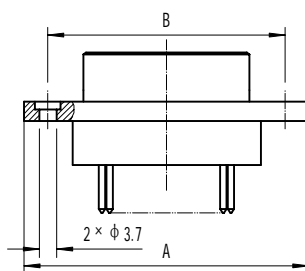


P/N	A	B
R75C-9TJN	26.1	20.1
R75C-15TJN	31.6	25.6
R75C21TJN	37.3	31.3
R75C-25TJN	42	36
R75C-31TJN	47.8	41.8
R75C-37TJN	53.5	47.5

P/N	A	B
R75C-9ZKN	26.1	20.1
R75C-15ZKN	31.6	25.6
R75C-21ZKN	37.3	31.3
R75C-25ZKN	42	36
R75C-31ZKN	47.8	41.8
R75C-37ZKN	53.5	47.5

Plug R75C-51, 66TJN

Receptacle R75C-51, 66ZKN



P/N	A	B
R75C-51TJN	52	46
R75C-66TJN	61.5	55.5

P/N	A	B
R75C-51ZKN	52	46
R75C-66ZKN	61.5	55.5

Mounting cutout dimensions

Product mounting cutout dimensions see "R75 Series Product mounting cutout dimensions".

R75C General Right angle PCB W Series (PCB gridding 1.91×2.54)



R75C-25TJW

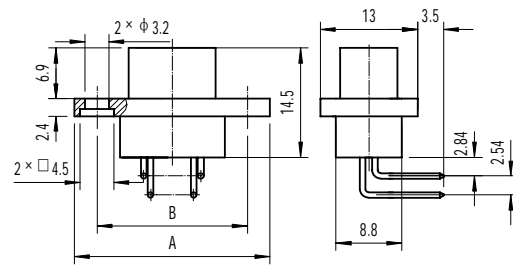
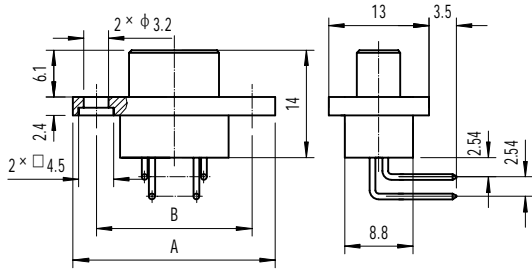
R75C-51TJW

R75C-25ZKW

R75C-51ZKW

Plug R75C-9, 15, 21, 25, 31, 37TJW

Receptacle R75C-9, 15, 21, 25, 31, 37ZKW

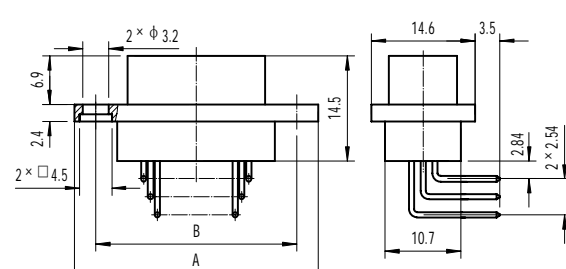
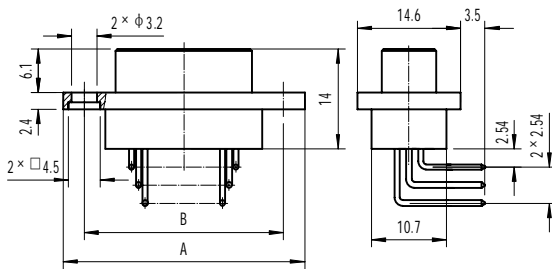


P/N	A	B
R75C-9TJW	26.1	20.1
R75C-15TJW	31.6	25.6
R75C-21TJW	37.3	31.3
R75C-25TJW	42	36
R75C-31TJW	47.8	41.8
R75C-37TJW	53.5	47.5

P/N	A	B
R75C-9ZKW	26.1	20.1
R75C-15ZKW	31.6	25.6
R75C-21ZKW	37.3	31.3
R75C-25ZKW	42	36
R75C-31ZKW	47.8	41.8
R75C-37ZKW	53.5	47.5

Plug R75C-51, 66TJW

Receptacle R75C-51, 66ZKW



P/N	A	B
R75C-51TJW	52	46
R75C-66TJW	61.5	55.5

P/N	A	B
R75C-51ZKW	52	46
R75C-66ZKW	61.5	55.5

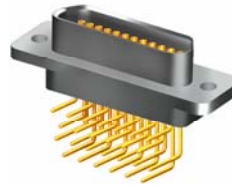
R75C General Right angle PCB WI Series (PCB gridding 3.82x2.54)



R75C-25TJWI



R75C-51TJWI

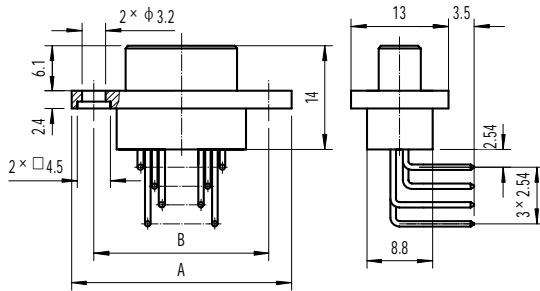


R75C-25ZKWI

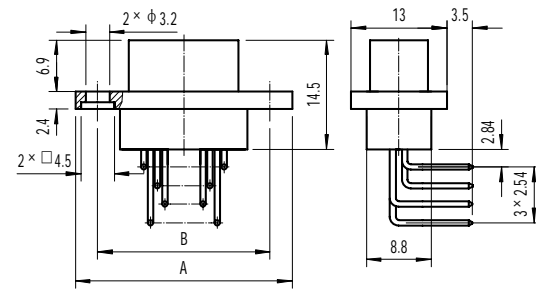


R75C-51ZKWI

Plug R75C-9, 15, 21, 25, 31, 37TJWI Receptace R75, 15, 21, 25, 31, 37ZKWI

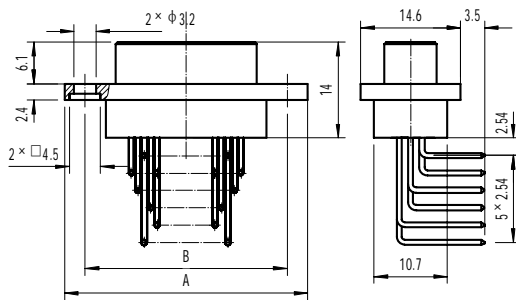


P/N	A	B
R75C-9TJWI	26.1	20.1
R75C-15TJWI	31.6	25.6
R75C-21TJWI	37.3	31.3
R75C-25TJWI	42	36
R75C-31TJWI	47.8	41.8
R75C-37TJWI	53.5	47.5



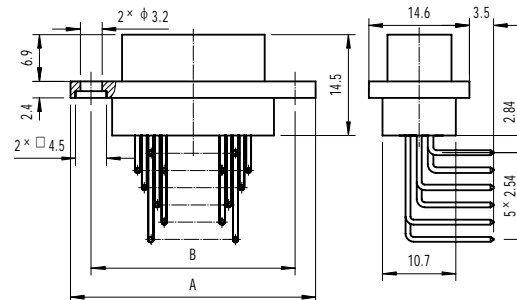
P/N	A	B
R75C-9ZKWI	26.1	20.1
R75C-15ZKWI	31.6	25.6
R75C-21ZKWI	37.3	31.3
R75C-25ZKWI	42	36
R75C-31ZKWI	47.8	41.8
R75C-37ZKWI	53.5	47.5

Plug R75C-51, 66TJWI



P/N	A	B
R75C-51TJWI	52	46
R75C-66TJWI	61.5	55.5

Receptacle R75C-51, 66ZKWI

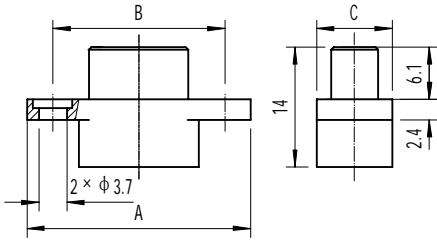


P/N	A	B
R75C-51ZKWI	52	46
R75C-66ZKWI	61.5	55.5

Mounting cutout dimensions

Product mounting cutout dimensions see "R75 Series Product mounting cutout dimensions".

R75C-A Crimp
Series Plug R75C×TJ-A



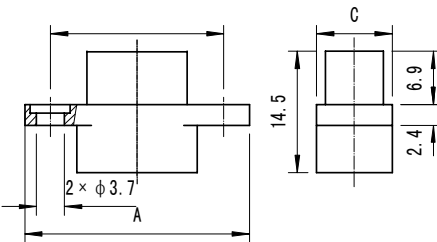
R75C-25TJ-A



R75C-51TJ-A

P/N	A	B	C
R75C-9TJ-A	26.1	20.1	8.8
R75C-15TJ-A	31.6	25.6	8.8
R75C-21TJ-A	37.3	31.3	8.8
R75C-25TJ-A	42	36	8.8
R75C-31TJ-A	47.8	41.8	8.8
R75C-37TJ-A	53.5	47.5	8.8
R75C-51TJ-A	52	46	10.7
R75C-66TJ-A	61.5	55.5	10.7

Receptacle R75C-×ZK-A B



R75C-25ZK-A



R75C-51ZK-A

P/N	A	B	C
R75C-9ZK-A	26.1	20.1	8.8
R75C-15ZK-A	31.6	25.6	8.8
R75C-21ZK-A	37.3	31.3	8.8
R75C-25ZK-A	42	36	8.8
R75C-31ZK-A	47.8	41.8	8.8
R75C-37ZK-A	53.5	47.5	8.8
R75C-51ZK-A	52	46	10.7
R75C-66ZK-A	61.5	55.5	10.7

Mounting cutout dimensions

Product mounting cutout dimensions see “R75 Series Product mounting cutout dimensions”.

R75C-A Crimp Series



R75C-25TJH-A



R75C-51TJH-A

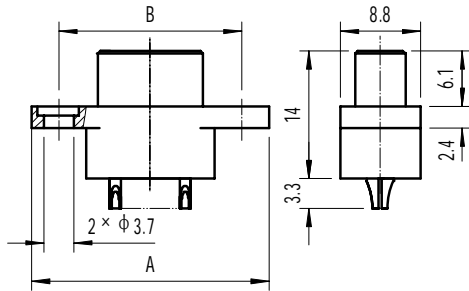


R75C-25ZKH-A

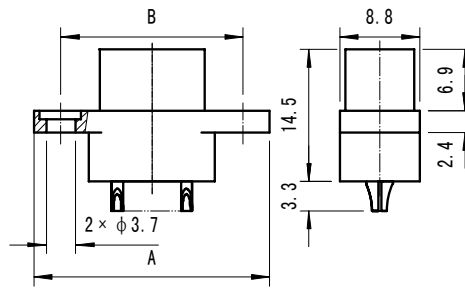


R75C-51ZKH-A

Plug R75C-9, 15, 21, 25, 31, 37TJH-A



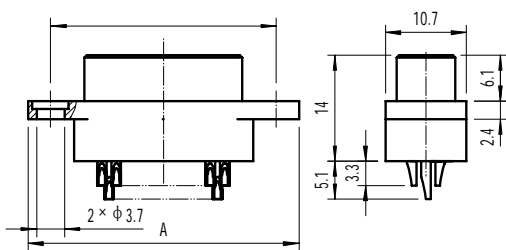
Receptacle R75C-9, 15, 21, 25, 31, 37ZKH-A



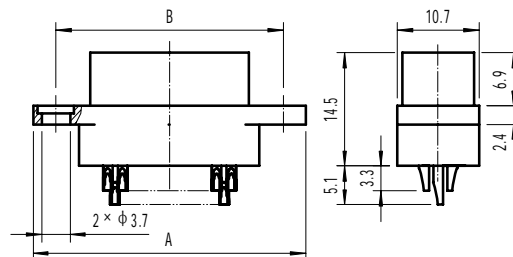
P/N	A	B
R75C-9TJH-A	26.1	20.1
R75C-15TJH-A	31.6	25.6
R75C-21TJH-A	37.3	31.3
R75C-25TJH-A	42	36
R75C-31TJH-A	47.8	41.8
R75C-37TJH-A	53.5	47.5

P/N	A	B
R75C-9ZKH-A	26.1	20.1
R75C-15ZKH-A	31.6	25.6
R75C-21ZKH-A	37.3	31.3
R75C-25ZKH-A	42	36
R75C-31ZKH-A	47.8	41.8
R75C-37ZKH-A	53.5	47.5

Plug R75C-51, 66TJH-A B



Receptacle R75C-51, 66ZKH-A



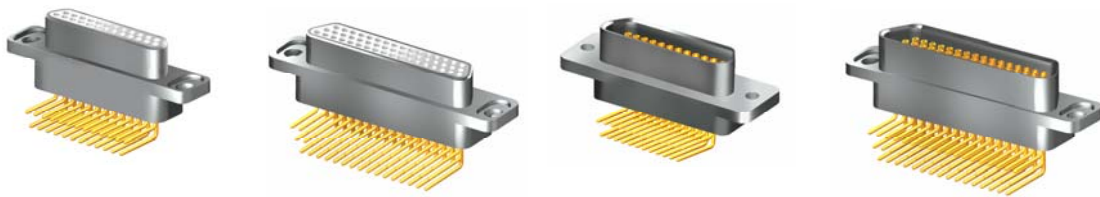
P/N	A	B
R75C-51TJH-A	52	46
R75C-66TJH-A	61.5	55.5

P/N	A	B
R75C-51ZKH-A	52	46
R75C-66ZKH-A	61.5	55.5

Mounting cutout dimensions

Product mounting cutout dimensions see "R75 Series Product mounting cutout dimensions".

R75C-A Right angle PCB W Series (PCB gridding 1.91×2.54)



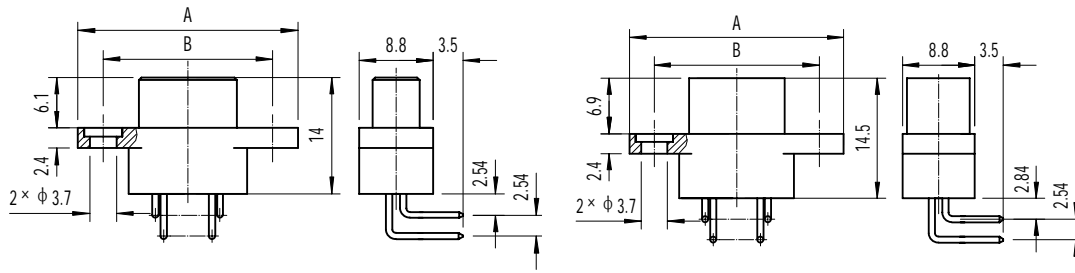
R75C-25TJW-A

R75C-51TJW-A

R75C-25ZKW-A

R75C-51ZKW-A

Plug R75C-9, 15, 21, 25, 31, 37TJW-A Receptacle R75C-9, 15, 21, 25, 31, 37ZKW-A

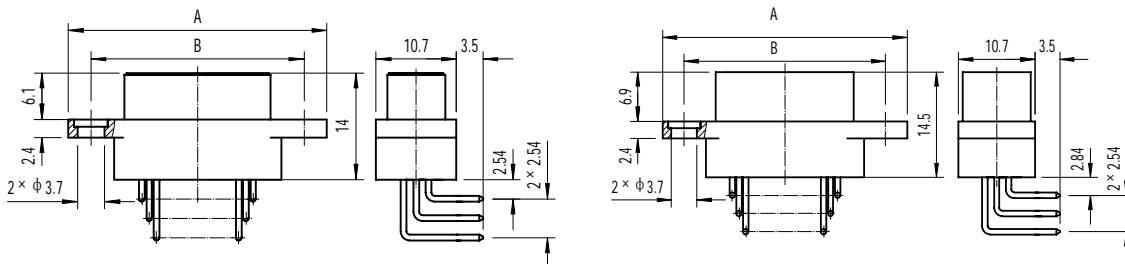


P/N	A	B
R75C-9TJW-A	26.1	20.1
R75C-15TJW-A	31.6	25.6
R75C-21TJW-A	37.3	31.3
R75C-25TJW-A	42	36
R75C-31TJW-A	47.8	41.8
R75C-37TJW-A	53.5	47.5

P/N	A	B
R75C-9ZKW-A	26.1	20.1
R75C-15ZKW-A	31.6	25.6
R75C-21ZKW-A	37.3	31.3
R75C-25ZKW-A	42	36
R75C-31ZKW-A	47.8	41.8
R75C-37ZKW-A	53.5	47.5

Plug R75C-51, 66TJW-A

Receptacle R75C-51, 66ZKW-A



P/N	A	B
R75C-51TJW-A	52	46
R75C-66TJW-A	61.5	55.5

P/N	A	B
R75C-51ZKW-A	52	46
R75C-66ZKW-A	61.5	55.5

Mounting cutout dimensions

Product mounting cutout dimensions see "R75 Series Product mounting cutout dimensions".

R75C-A Right angle PCB WI Series (PCB gridding 3.82×2.54)



R75C-25TJWI-A



R75C-51TJWI-A



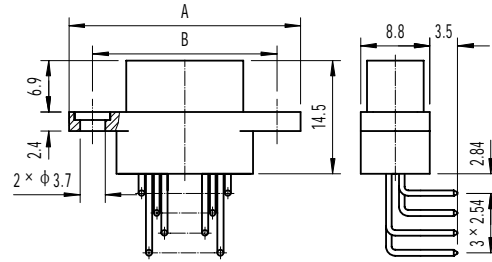
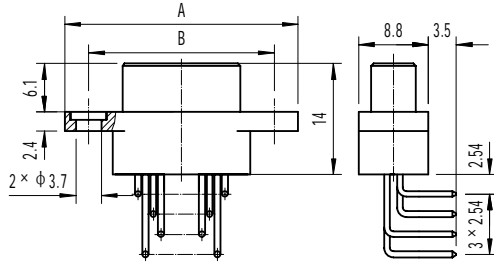
R75C-25ZKWI-A



R75C-51ZKWI-A

Plug R75C-9, 15, 21, 25, 31, 37TJWI-A

Receptacle R75C-9, 15, 21, 25, 31, 37ZKWI-A

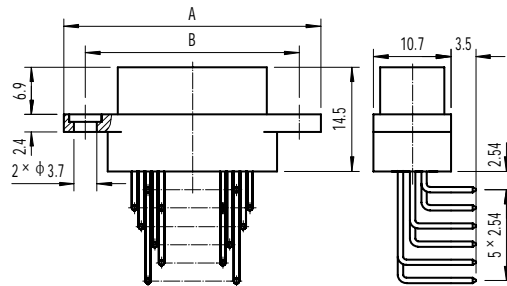
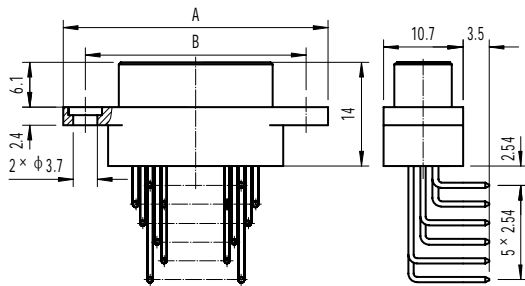


P/N	A	B
R75C-9TJWI-A	26.1	20.1
R75C-15TJWI-A	31.6	25.6
R75C-21TJWI-A	37.3	31.3
R75C-25TJWI-A	42	36
R75C-31TJWI-A	47.8	41.8
R75C-37TJWI-A	53.5	47.5

P/N	A	B
R75C-9ZKWI-A	26.1	20.1
R75C-15ZKWI-A	31.6	25.6
R75C-21ZKWI-A	37.3	31.3
R75C-25ZKWI-A	42	36
R75C-31ZKWI-A	47.8	41.8
R75C-37ZKWI-A	53.5	47.5

Plug R75C-51, 66TJWI-A

Receptacle R75C-51, 66ZKWI-A



P/N	A	B
R75C-51TJWI-A	52	46
R75C-66TJWI-A	61.5	55.5

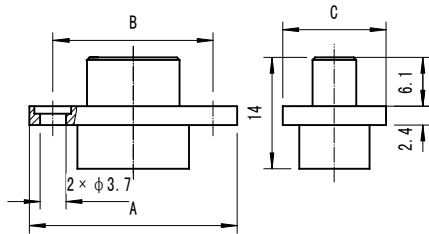
P/N	A	B
R75C-51ZKWI-A	52	46
R75C-66ZKWI-A	61.5	55.5

Mounting cutout dimensions

Product mounting cutout dimensions see "R75 Series Product mounting cutout dimensions".

R75C-A1 Crimp Series

Plug R75C-xTJ-A1



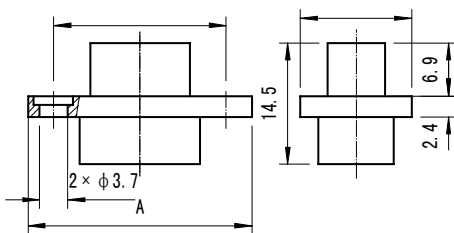
R75C-25TJ-A1



R75C-51TJ-A1

P/N	A	B	C
R75C-9TJ-A1	26.1	20.1	11
R75C-15TJ-A1	31.6	25.6	11
R75C-21TJ-A1	37.3	31.3	11
R75C-25TJ-A1	42	36	11
R75C-31TJ-A1	47.8	41.8	11
R75C-37TJ-A1	53.5	47.5	11
R75C-51TJ-A1	52	46	12.6
R75C-66TJ-A1	61.5	55.5	12.6

Receptacle R75C-xZK-A1 ^B ^C



R75C-25ZK-A1



R75C-51ZK-A1

P/N	A	B	C
R75C-9ZK-A1	26.1	20.1	11
R75C-15ZK-A1	31.6	25.6	11
R75C-21ZK-A1	37.3	31.3	11
R75C-25ZK-A1	42	36	11
R75C-31ZK-A1	47.8	41.8	11
R75C-37ZK-A1	53.5	47.5	11
R75C-51ZK-A1	52	46	12.6
R75C-66ZK-A1	61.5	55.5	12.6

Mounting cutout dimensions

Product mounting cutout dimensions see “R75 Series Product mounting cutout dimensions”.

R75C-A1 Crimp Series



R75C-25TJH-A1



R75C-51TJH-A1



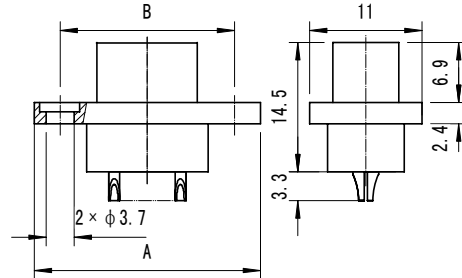
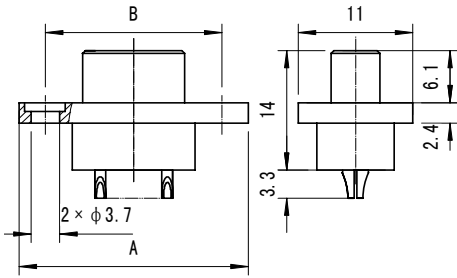
R75C-25ZKH-A1



R75C-51ZKH-A1

Plug R75C-9, 15, 21, 25, 31, 37TJH-A1

Receptacle R75C-9, 15, 21, 25, 31, 37ZKH-A1

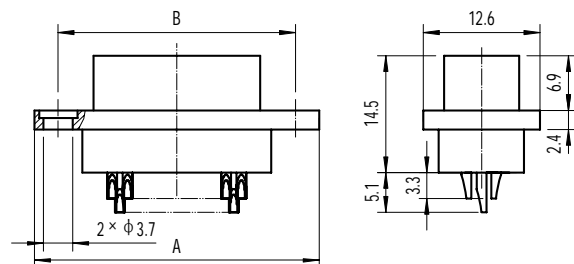
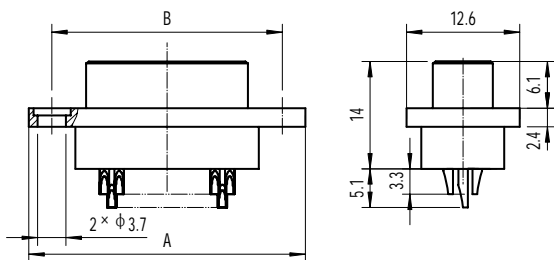


P/N	A	B
R75C-9TJH-A1	26.1	20.1
R75C-15TJH-A1	31.6	25.6
R75C-21TJH-A1	37.3	31.3
R75C-25TJH-A1	42	36
R75C-31TJH-A1	47.8	41.8
R75C-37TJH-A1	53.5	47.5

P/N	A	B
R75C-9ZKH-A1	26.1	20.1
R75C-15ZKH-A1	31.6	25.6
R75C-21ZKH-A1	37.3	31.3
R75C-25ZKH-A1	42	36
R75C-31ZKH-A1	47.8	41.8
R75C-37ZKH-A1	53.5	47.5

Plug R75C-51, 66TJH-A1

Receptacle R75C-51, 66ZKH-A1



P/N	A	B
R75C-51TJH-A1	52	46
R75C-66TJH-A1	61.5	55.5

P/N	A	B
R75C-51ZKH-A1	52	46
R75C-66ZKH-A1	61.5	55.5

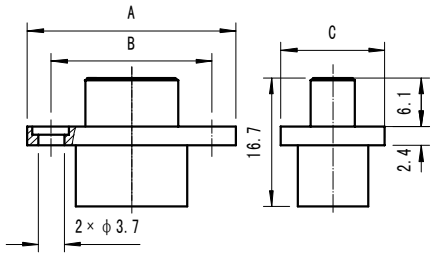
Mounting cutout dimensions

Product mounting cutout dimensions see "R75 Series Product mounting cutout dimensions".



R750 Crimp Series

Plug R750-9, 15, 21, 25, 31, 37, 51, 66TJ



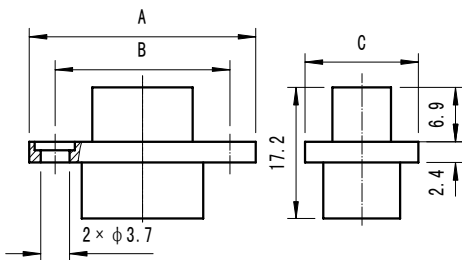
R750-25TJ



R750-51TJ

P/N	A	B	C
R750-9TJ	26.1	20.1	13
R750-15TJ	31.6	25.6	13
R750-21TJ	37.3	31.3	13
R750-25TJ	42	36	13
R750-31TJ	47.8	41.8	13
R750-37TJ	53.5	47.5	13
R750-51TJ	52	46	14.6
R750-66TJ	61.5	55.5	14.6

Receptacle R750-9, 15, 21, 25, 31, 37, 51, 66ZK



R750-25ZK



R750-51ZK

P/N	A	B	C
R750-9ZK	26.1	20.1	13
R750-15ZK	31.6	25.6	13
R750-21ZK	37.3	31.3	13
R750-25ZK	42	36	13
R750-31ZK	47.8	41.8	13
R750-37ZK	53.5	47.5	13
R750-51ZK	52	46	14.6
R750-66ZK	61.5	55.5	14.6

Mounting cutout dimensions

Product mounting cutout dimensions see "R75 Series Product mounting cutout dimensions".

R750 Soldering Series



R750-25TJH



R750-51TJH



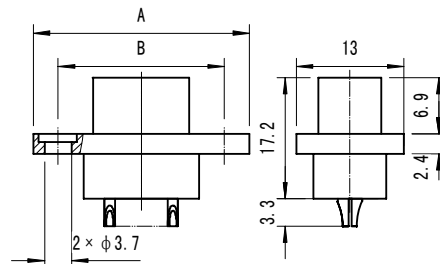
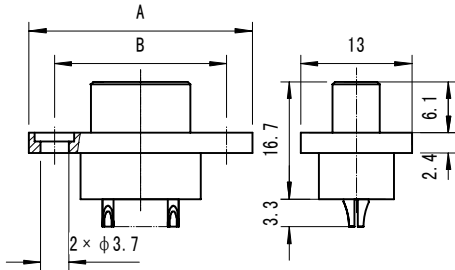
R750-25ZKH



R750-51ZKH

Plug R750-9, 15, 21, 25, 31, 37TJH

Receptacle R750-9, 15, 21, 25, 31, 37ZKH

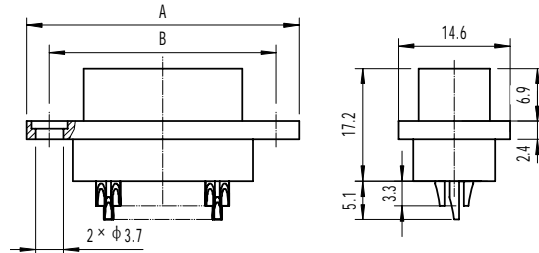
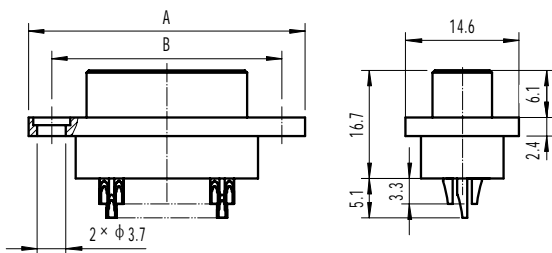


P/N	A	B
R750-9TJH	26.1	20.1
R750-15TJH	31.6	25.6
R750-21TJH	37.3	31.3
R750-25TJH	42	36
R750-31TJH	47.8	41.8
R750-37TJH	53.5	47.5

P/N	A	B
R750-9ZKH	26.1	20.1
R750-15ZKH	31.6	25.6
R750-21ZKH	37.3	31.3
R750-25ZKH	42	36
R750-31ZKH	47.8	41.8
R750-37ZKH	53.5	47.5

Plug R750-51, 66TJH

Receptacle R750-51, 66ZKH



P/N	A	B
R750-51TJH	52	46
R750-66TJH	61.5	55.5

P/N	A	B
R750-51ZKH	52	46
R750-66ZKH	61.5	55.5

Mounting cutout dimensions

Product mounting cutout dimensions see "R75 Series Product mounting cutout dimensions".

R75C-37 Special Product

Product brief introduction

R75C-37 special product includes soldering and right angle PCB termination types. Its mounting methods and performances are all the same with R75C general product. However, this series cannot mate with R75C. Matching relationship is below:

Plug (receptacle)	Matching receptacle (plug)	Remark
R75C-37TJHL8-D8	R75C-37ZKWP	The maximum dimension from PCB edge to mounting hole: 8.5mm
	R75C-37ZKWP15-01	The maximum dimension from PCB edge to mounting hole: 8.5~10.9mm
R75C-37ZKHL8-D8	R75C-37TJWP	The maximum dimension from PCB edge to mounting hole: 8.5mm
	R75C-37TJWP15-01	The maximum dimension from PCB edge to mounting hole: 8.5~10.9mm

Designation

R75C-37 TJ H L 8 -D8
 1 2 3 4 5 6

- 1 Basic series: R75C
- 2 Contact Number of contacts: 37
- 3 Configuration:
TJ - Plug with pins ; ZK - Receptacle with sockets
- 4 type of termination: H - soldering
- 5 locking devices type: L8
- 6 accessory type: D8

R75C -37 TJ W P 15-01
 1 2 3 4 5

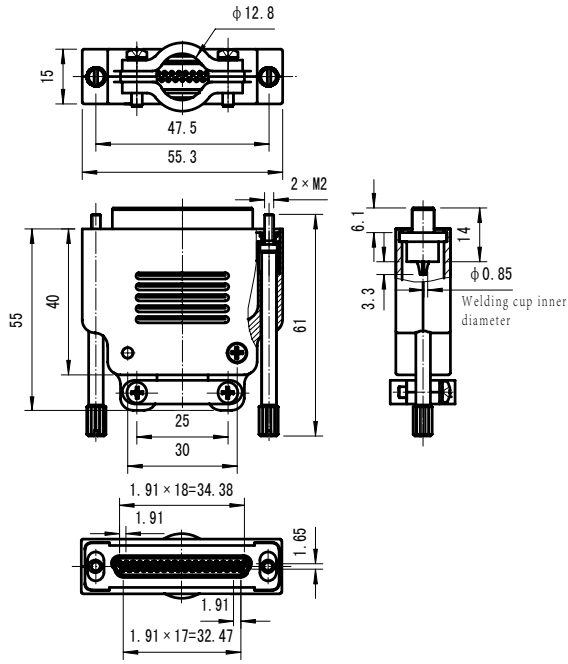
- 1 Basic series: R75C
- 2 Contact Number of contacts: 37
- 3 Configuration:
TJ - Plug with pins ; ZK - Receptacle with sockets
- 4 type of termination: W - Right angle PCB (1.91×2.54 gridding)
- 5 locking devices type: P、P15-01



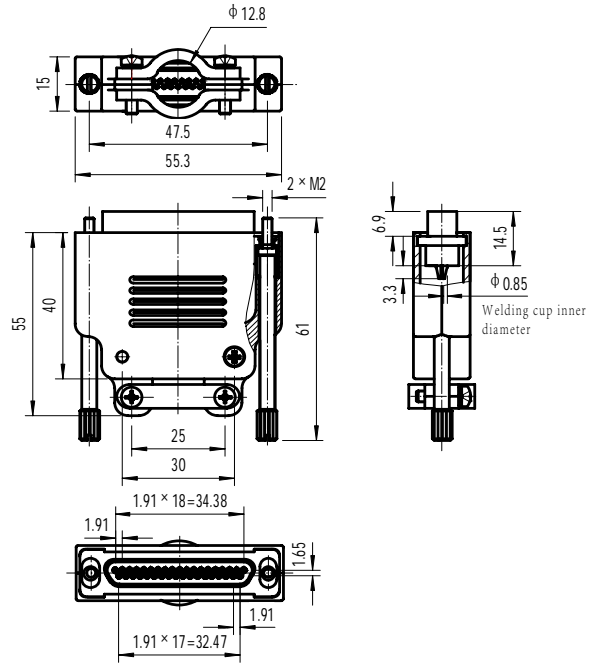
Plug R75C-37TJHL8-D8



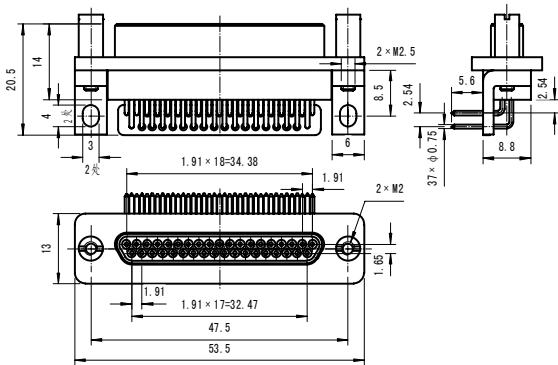
Receptacle R75C-37ZKHL8-D8



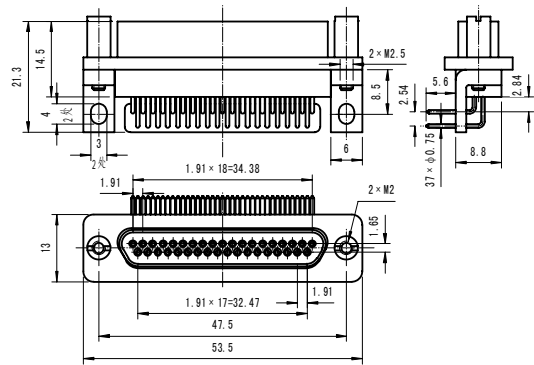
Plug R75C-37TJWP



Receptacle R75C-37ZKWP

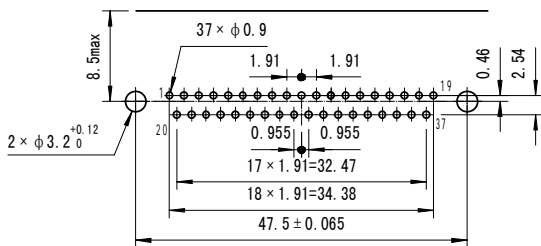


Plug R75C-37TJWP15-01

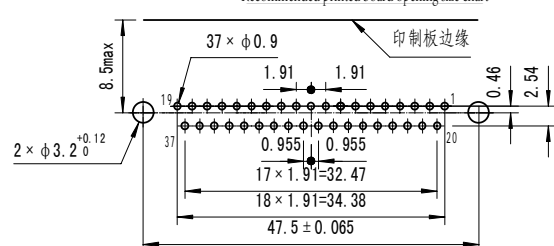


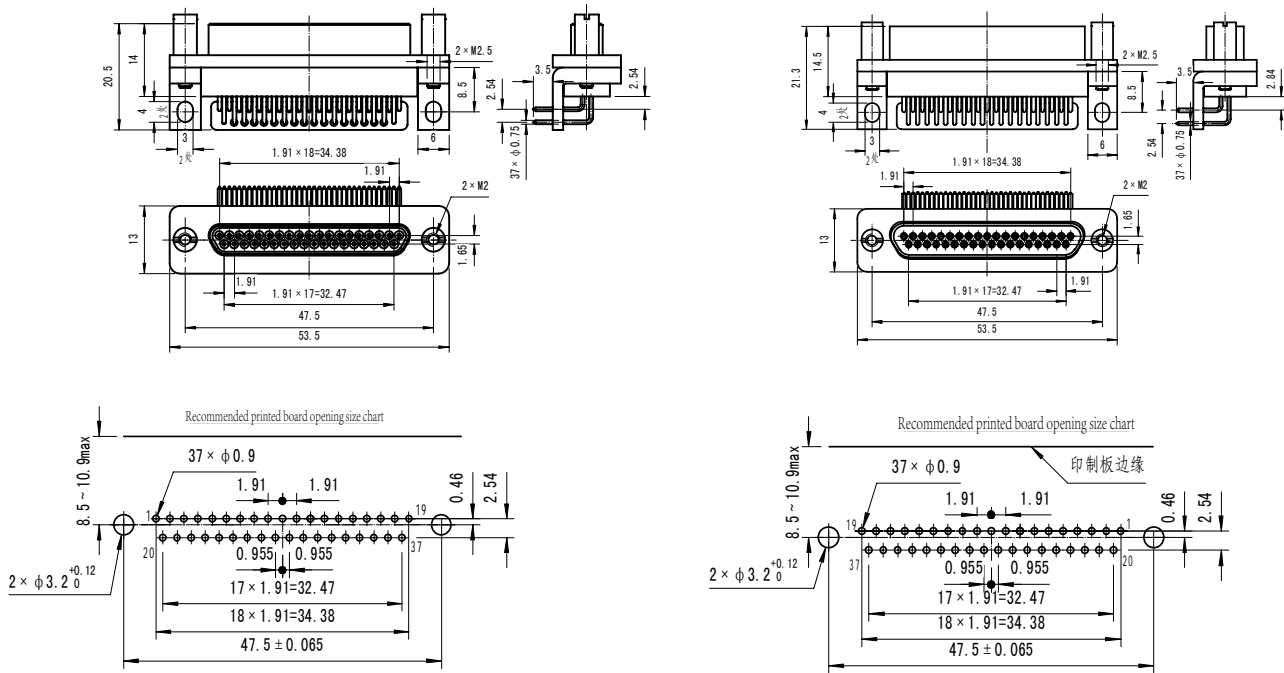
Receptacle R75C-37ZKWP15-01

Recommended printed board opening size chart



Recommended printed board opening size chart


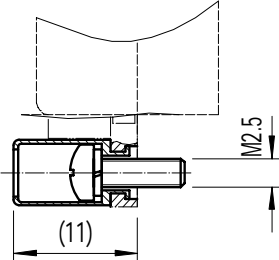




R75 locking devices

Free end locking devices Outline dimensions

- L type locking devices

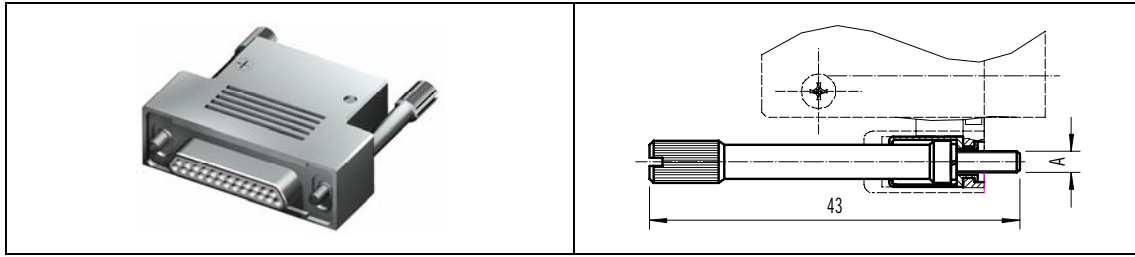
Assembling illustration	Assembly Outline dimensions
	

L TYPE locking devices match table

Free end locking devices	Applicable fixed end locking devices
L TYPE	P, P1, P3, P4, P5, P8, P9, P11~P16

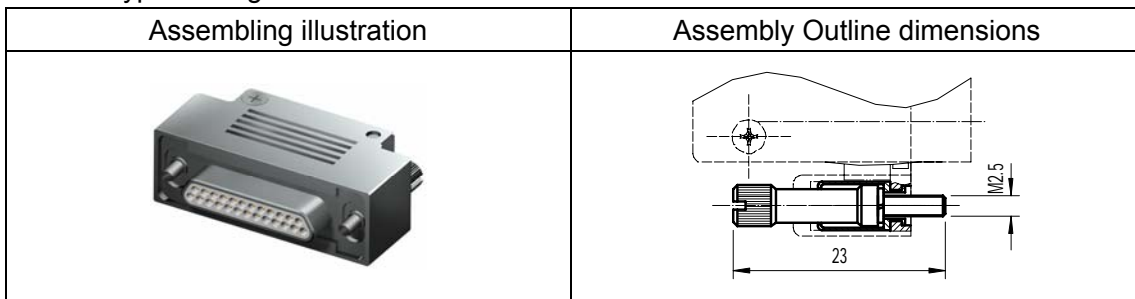
- L1、L2 type locking devices

Assembling illustration	Assembly Outline dimensions
-------------------------	-----------------------------



Free end locking devices	Applicable fixed end locking devices	Applicable accessories	A
L1 TYPE	P, P1, P3, P4, P5, P8, P9, P11~P16 type	D, D2 type	M2.5
L2 TYPE	P6 type	D, D2 type	0.099-48UNC-2A

● L3 type locking devices



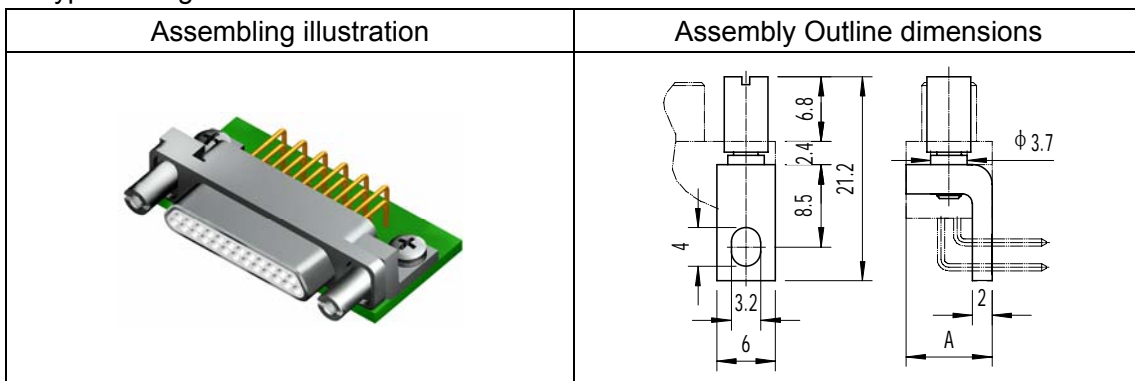
Free end locking devices	Applicable fixed end locking devices	Applicable accessories
L3 type	P, P1, P3, P4, P5, P8, P9, P11~P16 type	D, D1, D2 type

Fixed end locking devices Outline dimensions

● P type locking devices

P type locking devices are used for edge mounting of “-A” shell Right angle PCB Series Product without mounting panel.

P type locking devices with studded nut bracket which has $\Phi 3.7$ round shoulder.



Fixed end locking devices	Applicable Free end locking devices	A	Remark
P type	L, L1, L3 type	8.8	9~37



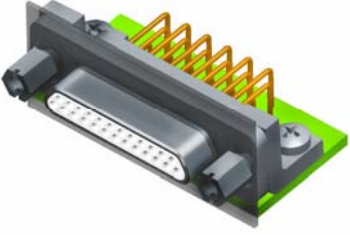
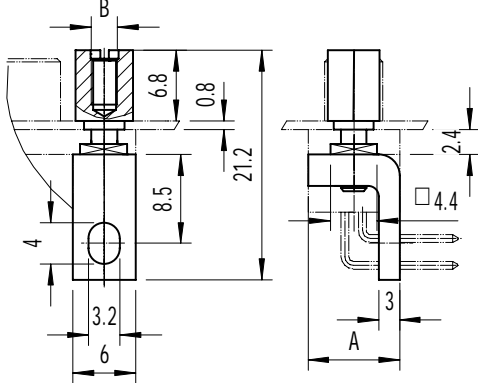
			contacts
		10.7	51~66 contacts

● P15 type locking devices

Assembling illustration	Assembly Outline dimensions

Fixed end locking devices	Applicable Free end locking devices	A	Remark
P15 type	L, L1, L3 type	13	9~37 contacts
		14.6	51~66 contacts

● P3, P6 type locking devices

Assembling illustration	Assembly Outline dimensions
	

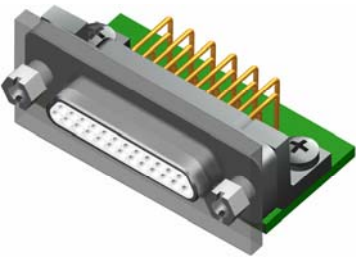
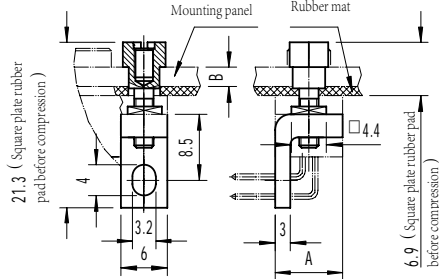
Fixed end locking devices	Applicable Free end locking devices	A	B	Remark
P3 type (metric thread)	L, L1, L3 type	13	M2.5-6H	9~37 contacts
		14.6		51~66 contacts
P6 type (inch thread)	L2	13	0.099-48UNC-2B	9~37 contacts
		14.6		51~66 contacts

● P4, P13 type locking devices

P4 type locking devices Only for R75C-XTJW/ZKW/TJW1/ZKW1 Right angle PCB Series Product back panel edge mounting type, mounting panel thickness 2.5mm.

P13 type locking devices Only for R75C-XTJW/ZKW/TJW1/ZKW1 Right angle PCB Series Product back panel edge mounting type, mounting panel thickness 2mm.

P4、P13 type locking devices with studded nut bracket which has □4.4 square mounting shoulder and square flange rubber washers.

Assembling illustration	Assembly Outline dimensions
	


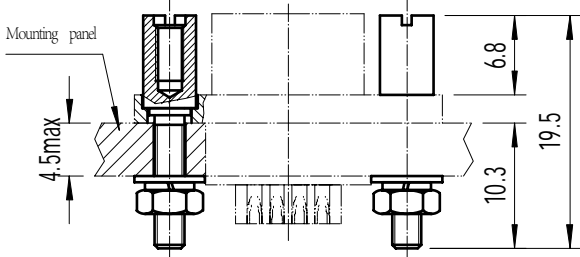
Fixed end locking devices	Applicable Free end locking devices	A	B	Remark
P4 type	L, L1, L3 type	13	2.5	9~37 contacts



		14.6	2.5	51~66 contacts
P13 type	L, L1, L3 type	13	2	9~37 contacts
		14.6	2	51~66 contacts

- P8 type locking devices

P8 type locking devices mainly used for Front panel mounting, mounting panel thickness $\leq 4.5\text{mm}$.

Assembling illustration	Assembly Outline dimensions
	

Fixed end locking devices	Applicable Free end locking devices
P8 type	L, L1, L3 type

- P9, P11 type locking devices

P9 type locking devices Applicable for Straight PCB N Series Product, PCB thickness $\leq 2.5\text{mm}$; with 8mm supporting sleeve without mounting panel.

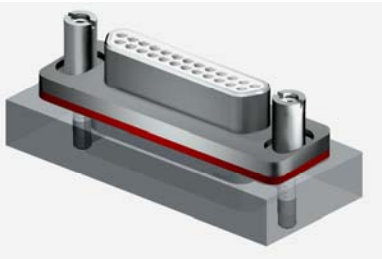
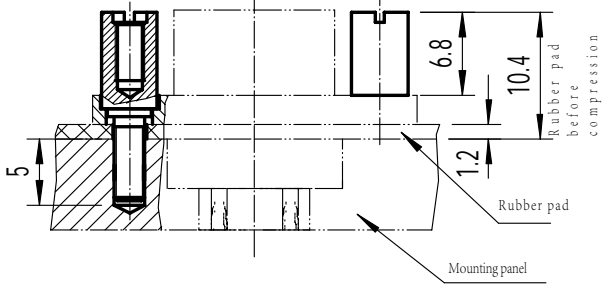
P11 type locking devices Applicable for Straight PCB N Series Product, PCB thickness 2.5~3.5 mm; with 7.2 mm supporting sleeve without mounting panel.

Assembling illustration	Assembly Outline dimensions
Assembling illustration	Assembly Outline dimensions

Fixed end locking devices	Applicable Free end locking devices	A	B
P9 type	L, L1, L3 type	27	8
P11 type	L, L1, L3 type	24	7.2

● P12 type locking devices

P12 type locking devices mainly used for Front panel mounting, with interface sealing function and thread depth $\geq 5\text{mm}$


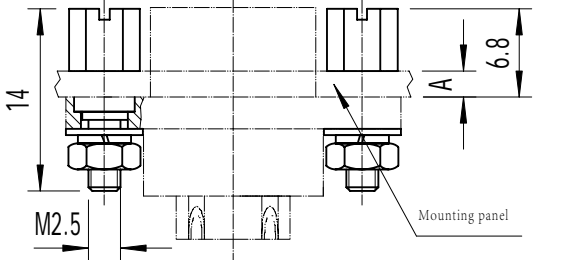
Assembling illustration	Assembly Outline dimensions
	

Fixed end locking devices	Applicable Free end locking devices
P12 type	L, L1, L3 type

● P14、P16 type locking devices

P14 type locking devices Applicable for crimp and soldering Series Product Back panel mounting, mounting thickness 2~2.5mm

P16 type locking devices Applicable for crimp and soldering Series Product Back panel mounting, mounting thickness 1~1.5mm

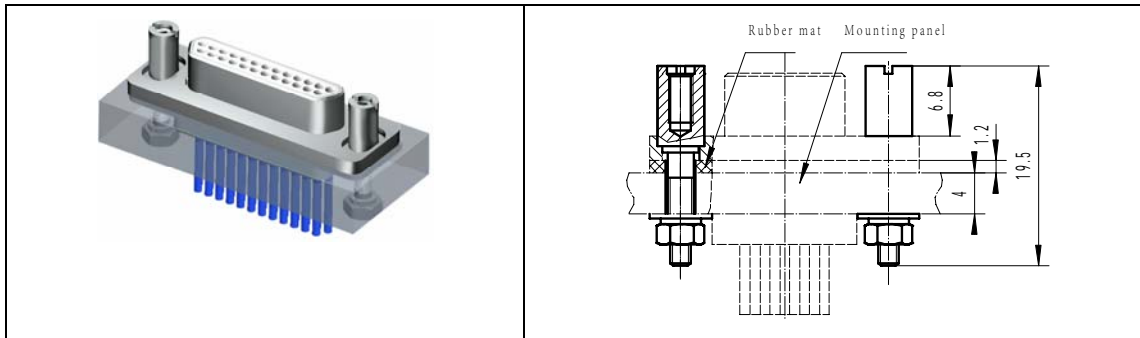
Assembling illustration	Assembly Outline dimensions
	

Fixed end locking devices	Applicable Free end locking devices	A
P14 type	L, L1, L3 type	2~2.5
P16 type	L, L1, L3 type	1~1.5

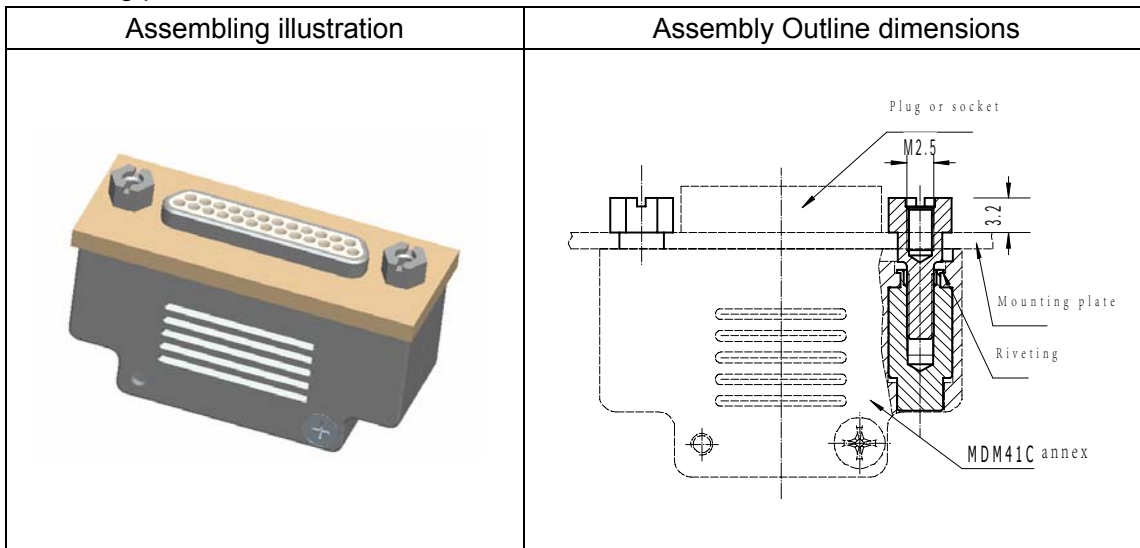
● P5 type locking devices

P5 type locking devices for R750 sealing Product front panel mounting type, mounting panel thickness $\leq 4\text{mm}$, with rubber washer

Assembling illustration	Assembly Outline dimensions
-------------------------	-----------------------------



- P1 type locking devices (newly added locking devices)
Mounting panel thickness 2.3~2.5mm.



R75 Series Accessories

Product brief introduction

- Accessories types: D, D1 and D2 end caps
- D is two-piece configuration with cable clamp built-in. Applicable for general crimping and soldering series Product;
- D1 is two-piece configuration without cable clamp built-in. Applicable for general crimping series Product ;
- D2 is two-piece configuration with cable clamp built-in. Applicable for -A1 type crimping and soldering series Product

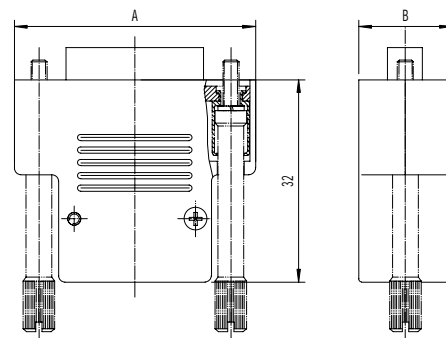
D Accessories Product Outline dimensions

Before mounted

After mounted



Outline dimensions



Applicable Product	A	B	Applicable Product	A	B
R75C-9	27.8	15	R75C-31	49.6	15
R75C-15	33.3	15	R75C-37	55.3	15
R75C-21	38.9	15	R75C-51	53.8	16.6
R75C-25	43.8	15	R75C-66	63.3	16.6

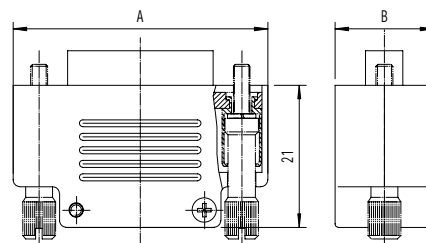
D1 Accessories Product Outline dimensions

Before mounted

After mounted



Outline dimensions



Applicable Product	A	B	Applicable Product	A	B
R75C-9	27.8	15	R75C-31	49.6	15
R75C-15	33.3	15	R75C-37	55.3	15

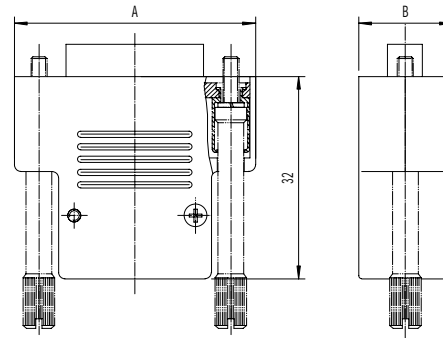
R75C-21	38.9	15	R75C-51	53.8	16.6
R75C-25	43.8	15	R75C-66	63.3	16.6

D2 Accessories Product Outline dimensions

Before mounted

After mounted

Outline dimensions



Applicable Product	A	B	Applicable Product	A	B
R75C-9	27.8	13	R75C-31	49.6	13
R75C-15	33.3	13	R75C-37	55.3	13
R75C-21	38.9	13	R75C-51	53.8	14.6
R75C-25	43.8	13	R75C-66	63.3	14.6