

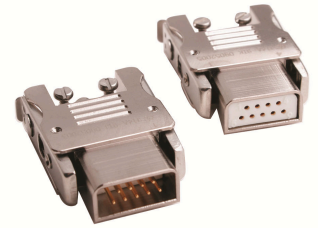


**APMA**

**R98G SERIES:**  
**2mm PITCH MICRO-D METAL HOUSING**  
**ELECTRIC CONNECTOR CATALOGUE**

## **BRIEF INTRODUCTION**

- High density, 2mm×2mm pitch.
- Using metal shell, with EMI function.
- 9 types of contacts arrangement, from 9 cores to101 cores.
- Push-pull double lock structure.
- Terminations: solder cup、 straight PCB、 right-angle PCB.



## **APPLICATIONS**

The products have lots of advantages, such as: high density、 light-weight、 miniaturization, which can realize reliable electrical connection inside of the system :cable to cable、 cable to board、 board to board.

## **OPERATING ENVIRONMENT**

The products can be used in the harsh environment, mainly used in tactical weapons system, aerospace satellites system, carrier rockets, ground safeguard system and also connection between various electronic equipments and instruments.

## **MAIN TECHNICAL CHARACTERISTICS**

Electrical performances		Environmental performances	
Current rating	≤3A	Operating temperature	-55°C ~ +125°C
Withstanding voltage	800V,RMS,50Hz	Vibration	10 ~ 2000Hz,196m/s <sup>2</sup>
Insulation resistance	≥2000MΩ @100V DC	Shock	980m/s <sup>2</sup>
Mechanical performances		Other performances	
Durability	500 cycles	Adaptive wire size	0.07~0.15 mm <sup>2</sup>

## **PART NUMBER DESCRIPTION**

R98G    -    X    X    X    X    -    X  
②    ③    ④    ⑤    ⑥

① Series name: R98G

② The number of contacts: 9、 15、 20、 26、 38、 51、 62、 74、 101.

③ Structure types: T-plug、 Z-receptacle

④ Contact types:

J-gold plating pin

K: gold plating socket

J1-right angle PCB pin、 gold plating

K1-right angle PCB socket、 gold plating

J2-straight PCB pin、 gold plating

K2-straight PCB socket、 gold plating

⑤ Mounting types : (only for receptacle)

B-panel mounting

L-with cable

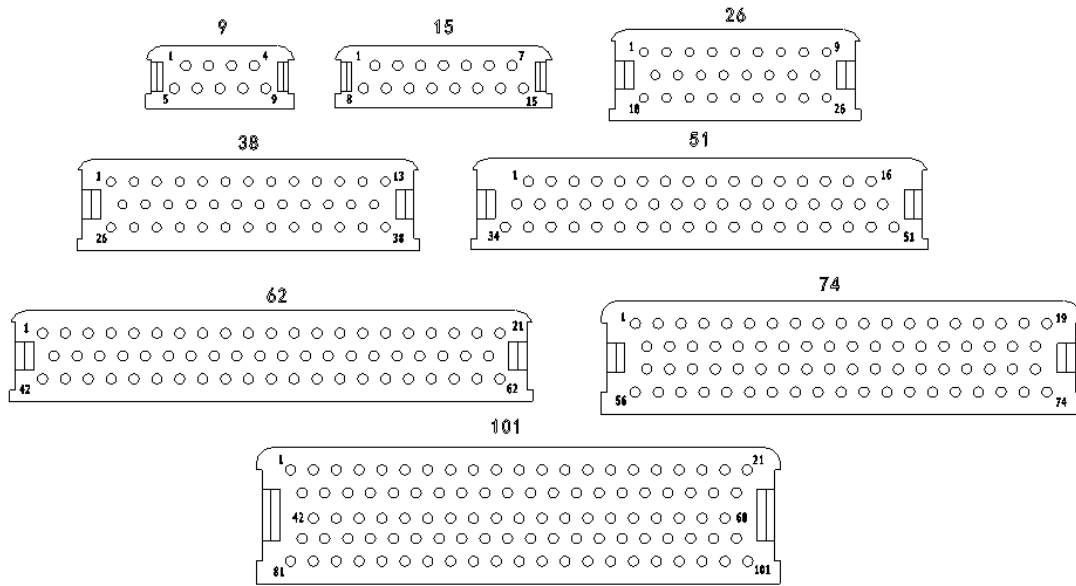
B2-side mounting flange

⑥ Modifications code: (only for receptacle)

Blank-common gasket

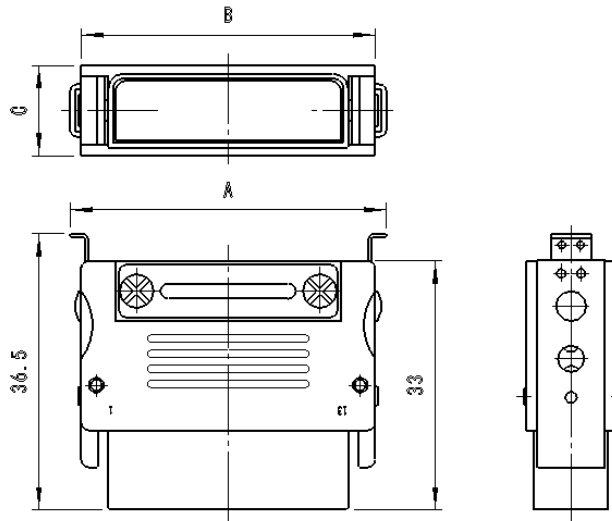
03-conductive gasket

## CONTACTS ARRANGEMENT (the mating view of insulator with sockets)



## OUTLINE DIMENSIONS

PLUG R98G-xTJ(K)



CONTACT NUMBER	A/mm	B/mm	C/mm
9	26.4	22	9
15	32.4	28	9
20	35.4	31	12
26	35.4	31	12
38	43.4	39	12
51	53.4	49	12
62	59.4	55	12
74	55.4	51	13
101	59.4	55	16



RECEPTACLE R98G-xZK(J)B							
				<p>RECOMMEND PANEL CUTOUT</p>			
CONTACT NUMBER	L/mm	M/mm	T/mm	C/mm	D/mm	F/mm	H/mm
9	15.2	6.6	3	22	28	12	1.5
15	21.2	6.6	3	28	34	12	1.5
20	25	10	3.5	34	41	16	2
26	25	10	3.5	34	41	16	2
38	33	10	3.5	42	50	16	2
51	43	10	3.5	52	60	16	2
62	49	10	3.5	58	65	16	2
74	45	12	3.5	54	62	18	2
101	49	14	3.5	58	65	20	2

RECEPTACLE R98G-xZK(J)L							
				<p>RECOMMEND PANEL CUTOUT</p>			
CONTACT NUMBER	C/mm	D/mm	F/mm	G/mm	H/mm	J/mm	K/mm
9	22	28	12	4.5	3	17	8.4
15	28	34	12	4.5	3	23	8.4
20	34	41	16	5.5	3.5	28.2	13.2
26	34	41	16	5.5	3.5	28.2	13.2
38	42	50	16	5.5	3.5	36.2	13.2
51	52	60	16	5.5	3.5	46.1	13.2
62	58	65	16	5.5	3.5	52.2	13.2
74	54	62	18	5.5	3.5	47.4	14.4
101	58	65	20	5.5	3.5	52.2	16.4

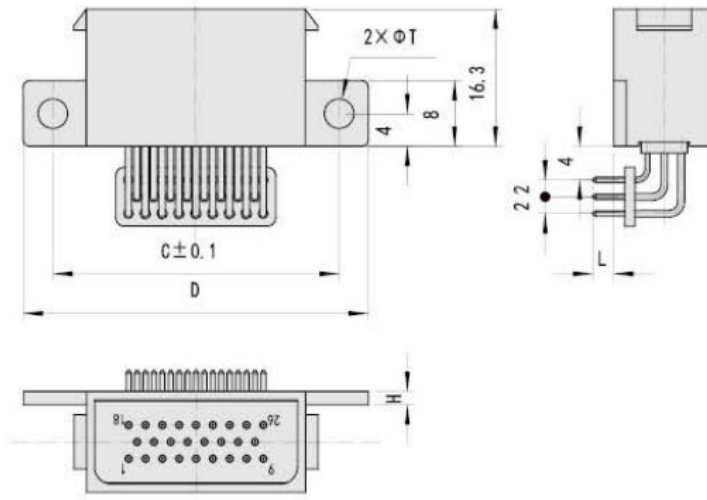


RECEPTACLE R98G-xZK1(J1)B								
				<p>RECOMMEND PANEL CUTOUT</p>				
CONTACT NUMBER	C/mm	D/mm	E/mm	H/mm	M/mm	L/mm	L1/mm	T/mm
9	22	28	12	1.5	6.6	15.2	4.2	3
15	28	34	12	1.5	6.6	21.2	4.2	3
20	34	41	16	2	10	25	3.5	3.5
26	34	41	16	2	10	25	3.5	3.5
38	42	50	16	2	10	33	3.5	3.5
51	52	60	16	2	10	43	3.5	3.5
62	58	65	16	2	10	49	3.5	3.5
74	54	62	18	2	12	45	3.5	3.5

RECEPTACLE R98G-xZK2(J2)B							
				<p>RECOMMEND PANEL CUTOUT</p>			
CONTACT NUMBER	C/mm	D/mm	F/mm	H/mm	L/mm	M/mm	T/mm
9	22	28	12	1.5	15.2	6.6	3
15	28	34	12	1.5	21.2	6.6	3
20	34	41	16	2	25	10	3.5
26	34	41	16	2	25	10	3.5
38	42	50	16	2	33	10	3.5
51	52	60	16	2	43	10	3.5
62	58	65	16	2	49	10	3.5
74	54	62	18	2	45	12	3.5
101	58	65	20	2	49	14	3.5

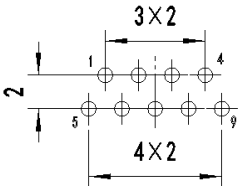
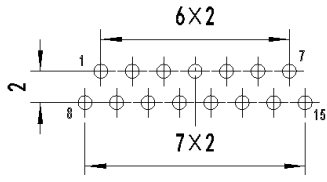
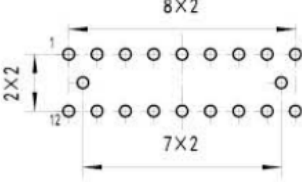
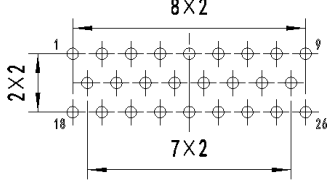
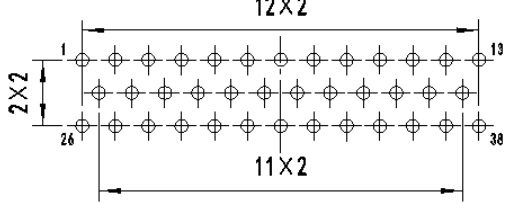
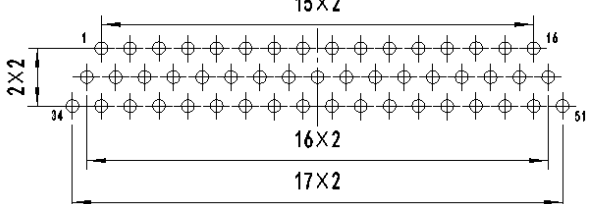
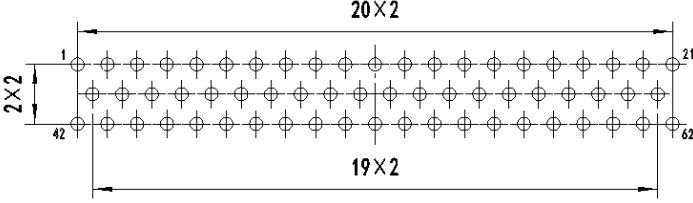
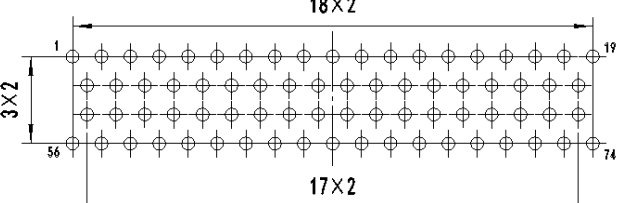
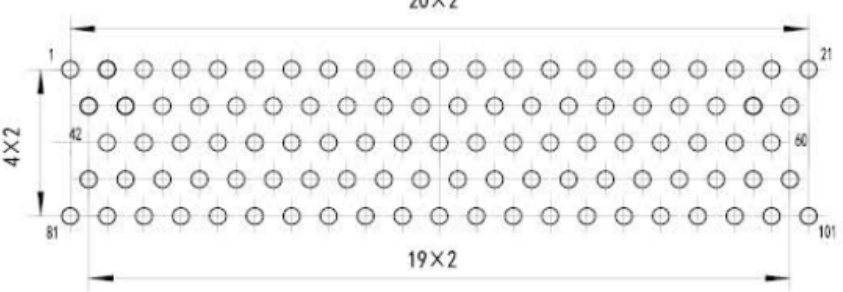


**RECEPTACLE R98G-xZK1(J1)B2**



CONTACT NUMBER	C/mm	D/mm	E/mm	H/mm	M/mm
9	22	28	1.5	3	3
15	28	34	1.5	3	3
20	34	41	2	2.5	3.5
26	34	41	2	2.5	3.5
38	42	50	2	2.5	3.5
51	52	60	2	2.5	3.5
62	58	65	2	2.5	3.5
74	54	62	2	2.5	3.5

### RECOMMEND PCB LAYOUT

			
L36C-9ZK2B	L36C-15ZK2B	L36C-20ZK2B	L36C-26ZK2B
			
L36C-38ZK2B		L36C-51ZK2B	
			
L36C-62ZK2B	L36C-74ZK2B		
			
L36C-101ZK2B			
<p>NOTE:</p> <ol style="list-style-type: none"> <li>1.The PCB layout of R98G-xZJ2B is at the base of R98G-xZK2B which symmetry on the vertical center line;</li> <li>2. The PCB layout of R98G-xZJ1B is at the base of R98G-xZK2B which symmetry on the horizontal center line;</li> <li>3. The PCB layout of R98G-xZK1B is at the base of R98G-xZK2B which rotate 360° on the center.</li> <li>4.Recommended hole size is <math>\Phi 0.7_{0}^{+0.1}</math>.</li> </ol>			

<p>R98G-9ZK1B2</p>	<p>R98G-15ZK1B2</p>	<p>R98G-20ZK1B2</p>
<p>R98G-26ZK1B2</p>	<p>R98G-38ZK1B2</p>	
<p>R98G-51ZK1B2</p>		
<p>R98G-62ZK1B2</p>		
<p>R98G-74ZK1B2</p>		
<p>NOTE:</p> <ol style="list-style-type: none"> <li>1.The PCB layout of R98G-xZJ1B2 is same with R98G-xZK1B2, only the cavity number is symmetric on the vertical center line;</li> <li>2.Recommended hole size is <math>\Phi 0.7^{+0.1}_0</math>.</li> </ol>		