



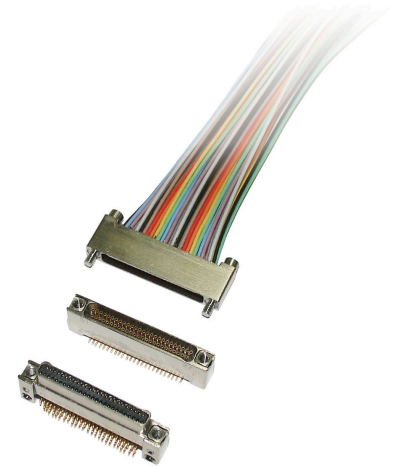
APMA

R70 SERIES:
0.635mm PITCH NANO-D ELECTRIC CONNECTOR CATALOGUE



BRIEF INTRODUCTION

- Performance comply with MIL-DTL-32139A.
- Male contacts using elastic twisted wire pins.
- High density, 0.635 mm pitch.
- Using metal shell.
- 10 types of contacts arrangement, from 9 cores to 85 cores.
- Plug and receptacle are all with locking devices.
- Terminations: crimping, surface mounting, right-angle PCB, straight PCB, straddle surface mounting.



APPLICATIONS

The products have lots of advantages, such as: high density, light-weight, miniaturization, which can realize reliable electrical connection inside of the system :cable to cable、 cable to board、 board to board.

OPERATING ENVIRONMENT

The products can be used in the harsh environment, such as high vibration and shock, especially used for which have special requirements on the space and weight.

CLASSIFICATIONS

According to the termination types, there are several types below:

- 1) Crimped plug / receptacle.
- 2) Horizontal surface mounting plug / receptacle.
- 3) Vertical surface mounting plug / receptacle.
- 4) Right-angle PCB plug / receptacle.
- 5) Straight PCB plug / receptacle.
- 6) Straddle surface mounting plug / receptacle.

MAIN TECHNICAL CHARACTERISTICS

Electrical performances		Environmental performances	
Current rating	≤1A	Operating temperature	-55°C ~ +125°C
Withstanding voltage	250V,RMS,60Hz	Vibration	10 ~ 2000Hz,196m/s ²
Insulation resistance	≥5000MΩ @100V DC	Shock	980m/s ²
Mechanical performances		Other performances	
Durability	200 cycles	Adaptive wire size	Standard #30 AWG

PART NUMBER DESCRIPTION

R70 - X X - XXX - XX X - XX - A

① ② ③ ④ ⑤ ⑥ ⑦ ⑧ ⑨

① Series name: R70- 0.635mm pitch nano-D rectangular connector with british system locking thread 0-80-UNF.

② The number of contact rows: 2 - two rows.

③ Classifications:

1 - crimping/straddle surface mounting plug

2 - crimping/straddle surface mounting receptacle

3 - horizontal mounting crimped plug

4 - horizontal mounting crimped receptacle

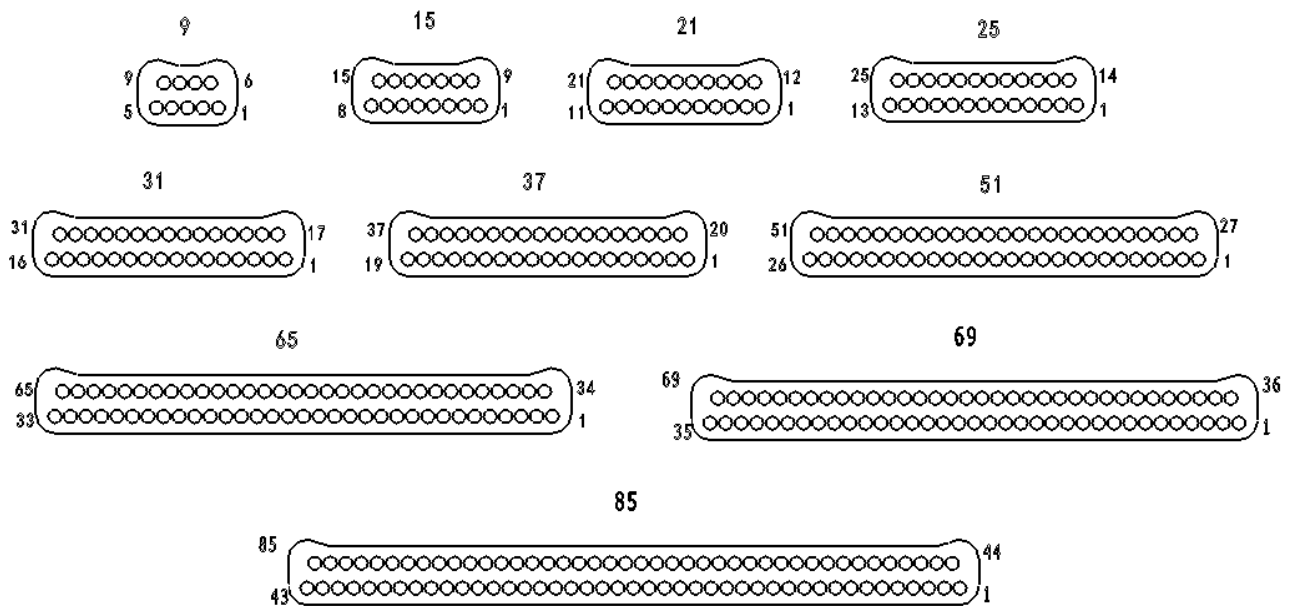
A - vertical surface mounting plug	B - vertical surface mounting receptacle
C - horizontal surface mounting plug	D - horizontal surface mounting receptacle
E - right angle PCB plug	F - right angle PCB receptacle
G - straight PCB plug	H - straight PCB receptacle
K - vertical surface mounting plug(with mounting ears)	L - vertical surface mounting receptacle(with mounting ears)
④ Shell Plating: 2 - chemical nickel plating	
⑤ Number of contacts: 009, 015, 021, 025, 031, 037, 051, 065, 069, 085	
⑥ Contact Terminations:	
12 - horizontal/vertical surface mounting pins	22 - horizontal/vertical surface mounting sockets
13 - straight PCB pins , leading pins 2.77mm	23 - straight PCB sockets , leading pins 2.77mm
14 - straight PCB pins , leading pins 3.56mm	24 - straight PCB sockets , leading pins 3.56mm
15 - straight PCB pins , leading pins 4.37mm	25 - straight PCB sockets , leading pins 4.37mm
16 - crimped pins	26 - crimped sockets
32 - right-angle PCB pins , leading pin 2.77mm	43 - right-angle PCB sockets , leading pins 2.77mm
33 - right-angle PCB pins , leading pin 3.56mm	44 - right-angle PCB sockets , leading pins 3.56mm
34 - right-angle PCB pins , leading pin 4.37mm	45 - right-angle PCB sockets , leading pins 4.37mm
⑦ Contacts plating : 1 - gold plating	
⑧ Locking device types: JC locking bolts TH coupling nuts 00 none	

Part number examples:

R70 series 15 cores connector, plug loaded with twisted wire pins, crimped termination, with locking bolts; Then the plug P/N is: R70-212-015-161-JC

Receptacle loaded with rigid sockets, horizontal surface mounting termination, with coupling nuts; Then the receptacle P/N is: R70-2D2-015-221-TH

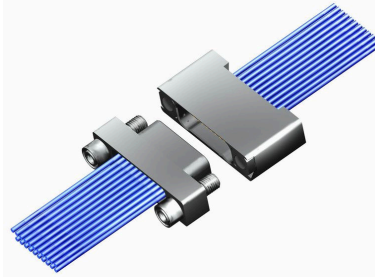
CONTACTS ARRANGEMENT(the mating view of insulator with pins)



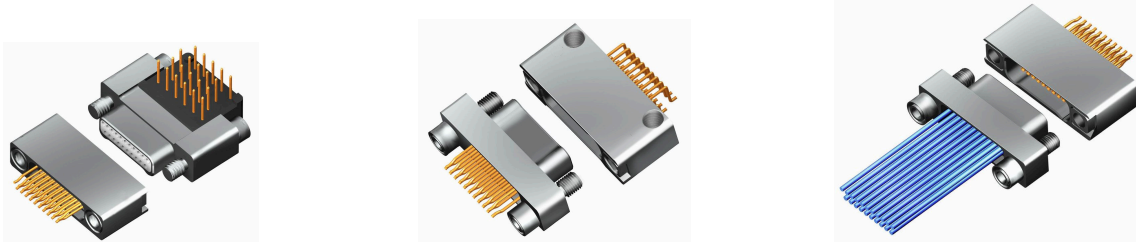


COMMON COUPLING TYPES :

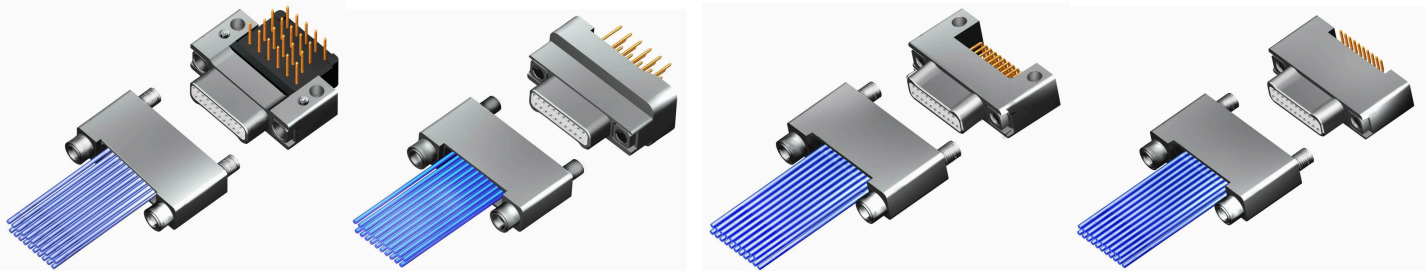
1. Cable to Cable



2. FCB to PCB/Cable



3. Cable to PCB



ORDERING INFORMATION

1、 The adaptive wire part number is: AFR-250-1X0.035-250V.

- a) If no special requirements, the length of wire outside the shell is 300mm. The wire colour follows from 1# cavity: black, brown, red, orange, yellow, green, blue, purple, grey, white, and then repeated. If more than 10 contacts, the wire color repeats every 10 wires. If customers have special requirements of wire length please add the length value at the end of the part number, for exampl: R70-015-2 61-THL600, wire it means the length outside the shell is 600mm.
- b) If customers prefer the same colour wire, please add the wire colour and length at the end of the part number, for examp (le: L92-222-015-261-TH red L500 it means using red wire only, and the wire length outside the shell is 500mm.

¶ customers ordered "JC" type locking device the operating tool should be ordered at same time the part number is: R70-BS.

OPERATING INSTRUCTIONS

When using the screwdriver to lock the locking bolts, customers need to tighten one side for a half circle, and then another side for a half circle, then repeat, until the plug and receptacle coupling together completely.

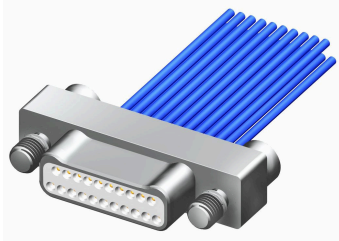
Attention:

- 1. Please don't tighten one side totally and then finish another side, because the contacts will be damaged.
- 2. When the plug and receptacle coupling together completely (the two shells should touch together), please stop torque, because too much force will damage the head of locking bolts, leading to the locking bolts can not be moved out.

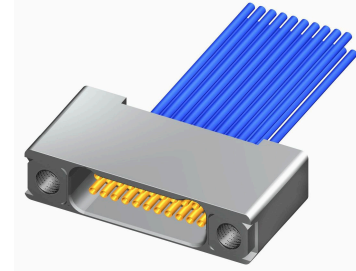


OUTLINE DIMENSIONS

CRIMPED PLUG / RECEPTACLE



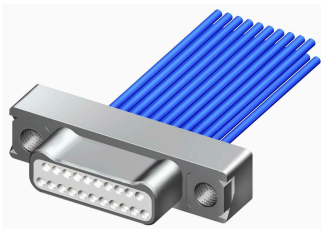
PLUG R70-212-XXX-161-JC



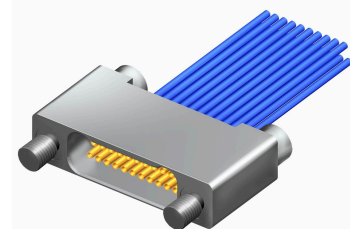
RECEPTACLE R70-222-XXX-261-TH

PLUG R70-212-XXX-161-JC	P/N	A/mm	B/mm	C	D/mm	E/mm
	R70-212-009-161-JC	9.52	6.86	0-80-UNF	3.18	1.46
	212-015-161-JC	11.43	8.76			
	212-021-161-JC	13.33	10.67			
	212-025-161-JC	14.6	11.94			
	212-031-161-JC	16.51	13.84			
	212-037-161-JC	18.41	15.75			
	212-051-161-JC	22.86	20.19			
	212-065-161-JC	27.31	24.64			
	212-069-161-JC	28.58	25.91	2-56-UNC	3.81	1.78
212-085-161-JC	34.98	31.65	2-56-UNC	3.81	1.78	
RECEPTACLE R70-222-XXX-261-TH	P/N	A/mm	B/mm	C	D/mm	E/mm
	R70-222-009-261-TH	9.52	6.86	0-80-UNF	3.18	1.46
	222-015-261-TH	11.43	8.76			
	222-021-261-TH	13.33	10.67			
	222-025-261-TH	14.6	11.94			
	222-031-261-TH	16.51	13.84			
	222-037-261-TH	18.41	15.75			
	222-051-261-TH	22.86	20.19			
	222-065-261-TH	27.31	24.64			
	222-069-261-TH	28.58	25.91	2-56-UNC	3.81	1.78
222-085-261-TH	34.98	31.65	2-56-UNC	3.81	1.78	

CRIMPED PLUG / RECEPTACLE



PLUG R70-212-XXX-161-TH



RECEPTACLE R70-222-XXX-261-JC



PLUG R70-212-XXX-161-TH	P/N	A/mm	B/mm	C	D/mm	E/mm
	R70- 212-009-161-TH	9.52	6.86	0-80-UNF	3.18	1.46
	212-015-161-TH	11.43	8.76			
	212-021-161-TH	13.33	10.67			
	212-025-161-TH	14.6	11.94			
	212-031-161-TH	16.51	13.84			
	212-037-161-TH	18.41	15.75			
	212-051-161-TH	22.86	20.19			
	212-065-161-TH	27.31	24.64			
	212-069-161-TH	28.58	25.91	2-56-UNC	3.81	1.78
212-085-161-TH	34.98	31.65	2-56-UNC	3.81	1.78	
RECEPTACLE R70-222-XXX-261-JC	P/N	A/mm	B/mm	C	D/mm	E/mm
	R70- 222-009-261-JC	9.52	6.86	0-80-UNF	3.18	1.46
	222-015-261-JC	11.43	8.76			
	222-021-261-JC	13.33	10.67			
	222-025-261-JC	14.6	11.94			
	222-031-261-JC	16.51	13.84			
	222-037-261-JC	18.41	15.75			
	222-051-261-JC	22.86	20.19			
	222-065-261-JC	27.31	24.64			
	222-069-261-JC	28.58	25.91	2-56-UNC	3.81	1.78
222-085-261-JC	34.98	31.65	2-56-UNC	3.81	1.78	

CRIMPED PLUG / RECEPTACLE	
PLUG R70-232-XXX-161-TH	RECEPTACLE R70-242-XXX-261-TH

PLUG R70-232-XXX-161-TH	P/N	A/mm	B/mm	C	D/mm	E/mm
	R70- 232-009-161-TH	9.52	6.86	0-80-UNF	3.18	1.46
	232-015-161-TH	11.43	8.76			
	232-021-161-TH	13.33	10.67			
	232-025-161-TH	14.6	11.94			
	232-031-161-TH	16.51	13.84			
	232-037-161-TH	18.41	15.75			
	232-051-161-TH	22.86	20.19			
	232-065-161-TH	27.31	24.64			
	232-069-161-TH	28.58	25.91	2-56-UNC	3.81	1.78
232-085-161-TH	34.98	31.65	2-56-UNC	3.81	1.78	



RECEPTACLE R70-242-XXX-261-TH	P/N	A/mm	B/mm	C	D/mm	E/mm
	R70- 242-009-261-TH	9.52	6.86	0-80-UNF	3.18	1.46
	242-015-261- TH	11.43	8.76			
	242-021-261- TH	13.33	10.67			
	242-025-261- TH	14.6	11.94			
	242-031-261- TH	16.51	13.84			
	242-037-261- TH	18.41	15.75			
	242-051-261- TH	22.86	20.19			
	242-065-261- TH	27.31	24.64	2-56-UNC	3.81	1.78
242-069-261- TH	28.58	25.91				
242-085-261- TH	34.98	31.65				

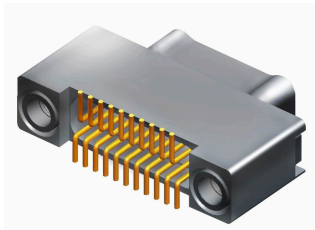
STRADDLE SURFACE MOUNTING PLUG/RECEPTACLE	
PLUG R70-212-XXX-121-JC	RECEPTACLE R70-222-XXX-221-TH

PLUG R70-212-XXX-121-JC	P/N	A/mm	B/mm	C	D/mm	E/mm
	R70- 212-009-121-JC	9.52	6.86	0-80-UNF	3.18	1.46
	212-015-121-JC	11.43	8.76			
	212-021-121-JC	13.33	10.67			
	212-025-121-JC	14.6	11.94			
	212-031-121-JC	16.51	13.84			
	212-037-121-JC	18.41	15.75			
	212-051-121-JC	22.86	20.19			
	212-065-121-JC	27.31	24.64	2-56-UNC	3.81	1.78
	212-069-121-JC	28.58	25.91			
212-085-121-JC	34.98	31.65				

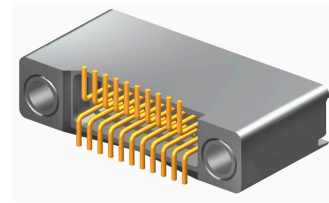
RECEPTACLE R70-222-XXX-221-TH	P/N	A/mm	B/mm	C	D/mm	E/mm
	R70- 222-009-221-TH	9.52	6.86	0-80-UNF	3.18	1.46
	222-015-221- TH	11.43	8.76			
	222-021-221- TH	13.33	10.67			
	222-025-221- TH	14.6	11.94			
	222-031-221- TH	16.51	13.84			
	222-037-221- TH	18.41	15.75			
	222-051-221- TH	22.86	20.19			
	222-065-221- TH	27.31	24.64	2-56-UNC	3.81	1.78
	222-069-221- TH	28.58	25.91			
222-085-221- TH	34.98	31.65				



VERTICAL SURFACE MOUNTING PLUG/RECEPTACLE



PLUG R70-2A2-XXX-121-TH

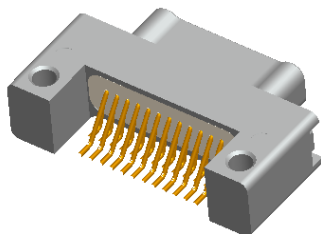


RECEPTACLE R70-2B2-XXX-221-TH

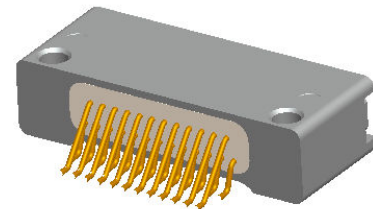
PLUG R70-2A2-XXX-121-TH	P/N	A/mm	B/mm	C	D/mm	E/mm
	R70- 2A2-009-121-TH	9.52	6.86	0-80-UNF	3.18	1.46
	2A2-015-121-TH	11.43	8.76			
	2A2-021-121-TH	13.33	10.67			
	2A2-025-121-TH	14.6	11.94			
	2A2-031-121-TH	16.51	13.84			
	2A2-037-121-TH	18.41	15.75			
	2A2-051-121-TH	22.86	20.19			
	2A2-065-121-TH	27.31	24.64			
	2A2-069-121-TH	28.58	25.91	2-56-UNC	3.81	1.78
	2A2-085-121-TH	34.98	31.65			

RECEPTACLE R70-2B2-XXX-221-TH	P/N	A/mm	B/mm	C	D/mm	E/mm
	R70- 2B2-009-221-TH	9.52	6.86	0-80-UNF	3.18	1.46
	2B2-015-221- TH	11.43	8.76			
	2B2-021-221- TH	13.33	10.67			
	2B2-025-221- TH	14.6	11.94			
	2B2-031-221- TH	16.51	13.84			
	2B2-037-221- TH	18.41	15.75			
	2B2-051-221- TH	22.86	20.19			
	2B2-065-221- TH	27.31	24.64			
	2B2-069-221- TH	28.58	25.91	2-56-UNC	3.81	1.78
	2B2-085-221- TH	34.98	31.65			

HORIZONTAL SURFACE MOUNTING PLUG/RECEPTACLE



PLUG R70-2C2-XXX-121-TH



RECEPTACLE R70-2D2-XXX-221-TH



PLUG R70-2C2-XXX-121-TH	P/N	A/mm	B/mm	C	D/mm	E/mm	F/mm	G/mm
	R70- 2C2-009-121-TH	9.52	6.86	0-80-UNF	3.18	1.46	4.75	8.76
	2C2-015-121-TH	11.43	8.76					
	2C2-021-121-TH	13.33	10.67					
	2C2-025-121-TH	14.6	11.94					
	2C2-031-121-TH	16.51	13.84					
	2C2-037-121-TH	18.41	15.75					
	2C2-051-121-TH	22.86	20.19					
	2C2-065-121-TH	27.31	24.64					
	2C2-069-121-TH	28.58	25.91					
	2C2-085-121-TH	34.98	31.65	2-56-UNC	3.81	1.78	5.21	9.53

RECEPTACLE R70-2D2-XXX-221-TH	P/N	A/mm	B/mm	C	D/mm	E/mm	F/mm	G/mm
	R70- 2D2-009-221-TH	9.52	6.86	0-80-UNF	3.18	1.46	4.76	5.72
	2D2-015-221- TH	11.43	8.76					
	2D2-021-221- TH	13.33	10.67					
	2D2-025-221- TH	14.6	11.94					
	2D2-031-221- TH	16.51	13.84					
	2D2-037-221- TH	18.41	15.75					
	2D2-051-221- TH	22.86	20.19					
	2D2-065-221- TH	27.31	24.64					
	2D2-069-221- TH	28.58	25.91					
	2D2-085-221- TH	34.98	31.65	2-56-UNC	3.81	1.78	5.33	6.86

RIGHT ANGLE PCB PLUG/RECEPTACLE		
PLUG R70-2E2-XXX-321-JC	PLUG R70-2E2-XXX-321-TH	RECEPTACLE R70-2F2-XXX-431-TH

PLUG R70-2E2-XXX-321-JC	P/N	A/mm	B/mm	C/mm	D	E/mm	F/mm
	R70- 2E2-009-321-JC	9.52	6.86	4.32	0-80-UNF	3.18	1.46
	2E2-015-321-JC	11.43	8.76	6.22			
	2E2-021-321-JC	13.33	10.67	8.13			
	2E2-025-321-JC	14.6	11.94	9.4			
	2E2-031-321-JC	16.51	13.84	11.3			
	2E2-037-321-JC	18.41	15.75	13.21			
	2E2-051-321-JC	22.86	20.19	17.65			
	2E2-065-321-JC	27.31	24.64	22.1			
	2E2-069-321-JC	28.58	25.91	23.1			
	2E2-085-321-JC	34.98	31.65	28.44	2-56-UNC	3.81	1.78



PLUG R70-2E2-XXX-321-TH	P/N	A/mm	B/mm	C/mm	D	E/mm	F/mm	G/mm	H/mm
	R70- 2E2-009-321-TH	9.52	6.86	4.32	0-80-UNF	3.18	1.46	4.75	8.76
	2E2-015-321-TH	11.43	8.76	6.22					
	2E2-021-321-TH	13.33	10.67	8.13					
	2E2-025-321-TH	14.6	11.94	9.4					
	2E2-031-321-TH	16.51	13.84	11.3					
	2E2-037-321-TH	18.41	15.75	13.21					
	2E2-051-321-TH	22.86	20.19	17.65					
	2E2-065-321-TH	27.31	24.64	22.1					
	2E2-069-321-TH	28.58	25.91	23.1	2-56-UNC	3.81	1.78	6.2	10.41

RECEPTACLE R70-2F2-XXX-431-TH	P/N	A/mm	B/mm	C/mm	D	E/mm	F/mm
	R70- 2F2-009-431-TH	9.52	6.86	4.32	0-80-UNF	3.18	1.46
	2F2-015-431-TH	11.43	8.76	6.22			
	2F2-021-431-TH	13.33	10.67	8.13			
	2F2-025-431-TH	14.6	11.94	9.4			
	2F2-031-431-TH	16.51	13.84	11.3			
	2F2-037-431-TH	18.41	15.75	13.21			
	2F2-051-431-TH	22.86	20.19	17.65			
	2F2-065-431-TH	27.31	24.64	22.1			
	2F2-069-431-TH	28.58	25.91	23.1	2-56-UNC	3.81	1.78

STRAIGHT PCB PLUG/RECEPTACLE	
PLUG R70-2G2-XXX-131-TH	RECEPTACLE R70-2H2-XXX-231-TH

PLUG R70-2G2-XXX-131-TH	P/N	A/mm	B/mm	C	D/mm
	R70- 2G2-009-131-TH	9.52	6.86	0-80-UNF	3.18
	2G2-015-131-TH	11.43	8.76		
	2G2-021-131-TH	13.33	10.67		
	2G2-025-131-TH	14.6	11.94		
	2G2-031-131-TH	16.51	13.84		
	2G2-037-131-TH	18.41	15.75		
	2G2-051-131-TH	22.86	20.19		
	2G2-065-131-TH	27.31	24.64		
	2G2-069-131-TH	28.58	25.91	2-56-UNC	3.81



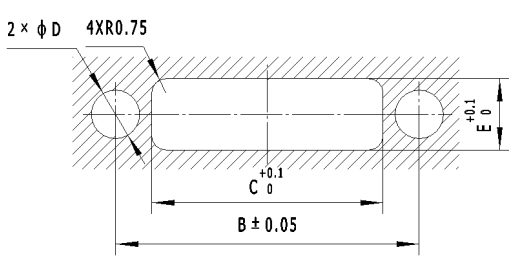
RECEPTACLE R70-2H2-XXX-231-TH	P/N	A/mm	B/mm	C	D/mm
	R70- 2H2-009-231-TH	9.52	6.86	0-80-UNF	3.18
	2H2-015-231-TH	11.43	8.76		
	2H2-021-231-TH	13.33	10.67		
	2H2-025-231-TH	14.6	11.94		
	2H2-031-231-TH	16.51	13.84		
	2H2-037-231-TH	18.41	15.75		
	2H2-051-231-TH	22.86	20.19		
	2H2-065-231-TH	27.31	24.64		
	2H2-069-231-TH	28.58	25.91	2-56-UNC	3.81
2H2-085-231-TH	34.98	31.65			

VERTICAL SURFACE MOUNTING (WITH MOUNTING EARS) PLUG/RECEPTACLE	
PLUG R70-2K2-XXX-121-JC	RECEPTACLE R70-2L2-XXX-221-JC

PLUG R70-2K2-XXX-121-JC	P/N	A/mm	B/mm	C/mm	D/mm	E
	R70- 2K2-009-121-JC	9.52	6.86	13.21	15.88	0-80-UNF
	2K2-015-121-JC	11.43	8.76	15.11	17.78	
	2K2-021-121-JC	13.33	10.67	17.02	19.69	
	2K2-025-121-JC	14.6	11.94	18.29	20.96	
	2K2-031-121-JC	16.51	13.84	20.19	22.86	
	2K2-037-121-JC	18.41	15.75	22.1	24.77	
	2K2-051-121-JC	22.86	20.19	26.54	29.21	
	2K2-065-121-JC	27.31	24.64	30.99	33.66	
	K2-069-121-JC	28.58	25.91	34.93	32.26	

	P/N	A/mm	B/mm	C/mm	D/mm	E
	R70- 2L2-009-221-JC	9.52	6.86	13.21	15.88	0-80-UNF
	2L2-015-221-JC	11.43	8.76	15.11	17.78	
	2L2-021-221-JC	13.33	10.67	17.02	19.69	
	2L2-025-221-JC	14.6	11.94	18.29	20.96	
	2L2-031-221-JC	16.51	13.84	20.19	22.86	
	2L2-037-221-JC	18.41	15.75	22.1	24.77	
	2L2-051-221-JC	22.86	20.19	26.54	29.21	
	2L2-065-221-JC	27.31	24.64	30.99	33.66	
	2L2-069-221-JC	28.58	25.91	34.93	32.26	

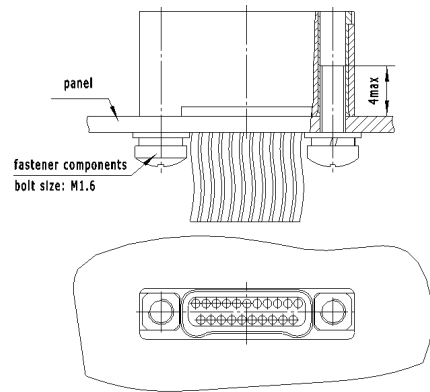
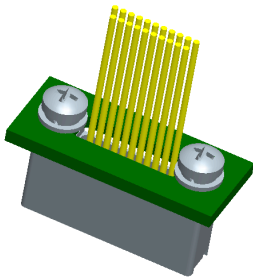
PANEL MOUNTING DIMENSIONS

R70-222-XXX-261-TH	SIZE	B/mm	C/mm	D/mm	E/mm
	9	6.86	4.2	1.8	2.8
	15	8.76	6.1	1.8	2.8
	21	10.67	8	1.8	2.8
	25	11.94	9.3	1.8	2.8
	31	13.84	11.2	1.8	2.8
	37	15.75	13.1	1.8	2.8
	51	20.19	17.6	1.8	2.8
	65	24.64	22.1	1.8	2.8
	69	25.91	23.2	1.8	2.8
	85	31.65	29.5	2.3	3.3

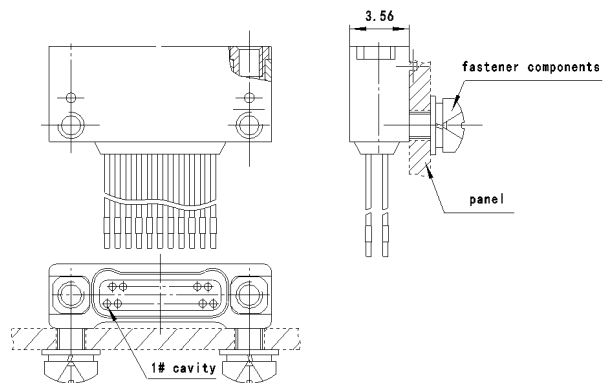
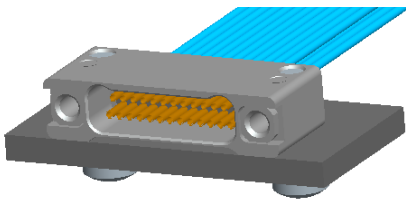
INSTALLATION INSTRUCTIONS

When noted "-A" at the end of P/N, it means including all the mounting components like bolts, spring gaskets, flat gaskets. The thickness of adaptive mounting panel or PCB is no more than 2mm. When customers need special requirements pls note detailed information in the order, if customers want to use their own bolts, the length of bolts should meet the following instructions.

R70-222-XXX-261-TH

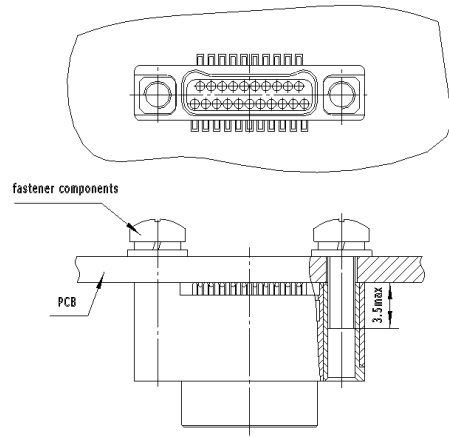
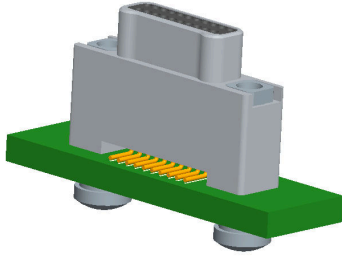


R70-232-XXX-161-TH / R70-242-XXX-261-TH

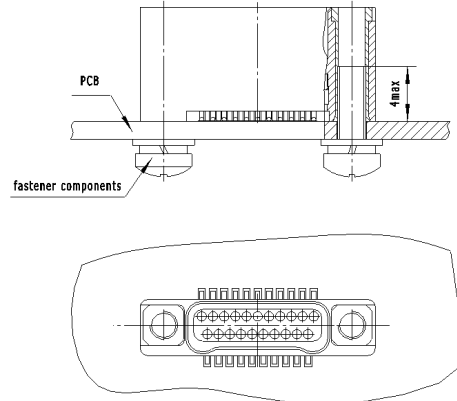
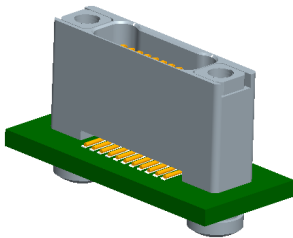




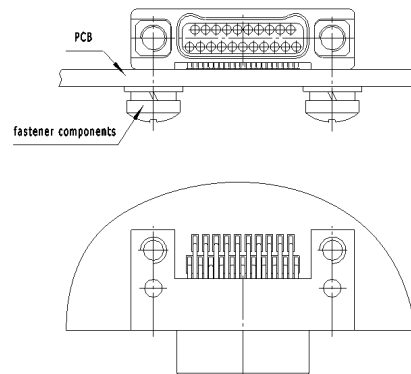
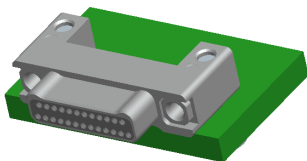
R70-2A2-XXX-121-TH



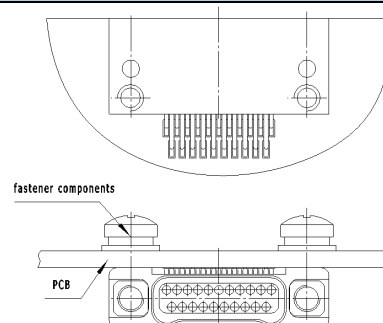
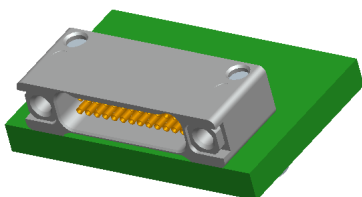
R70-2B2-XXX-221-TH



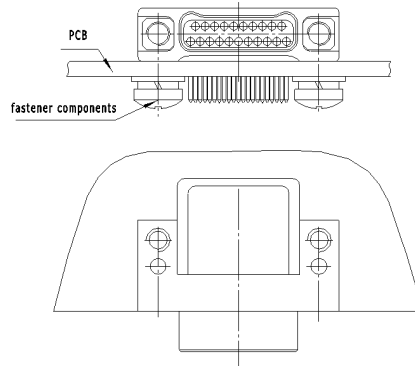
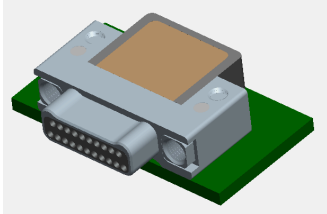
R70-2C2-XXX-121-TH



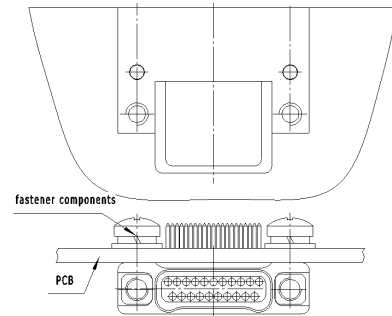
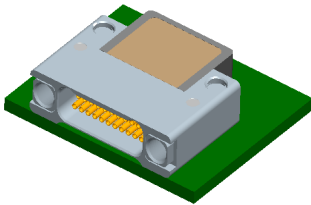
R70-2D2-XXX-221-TH



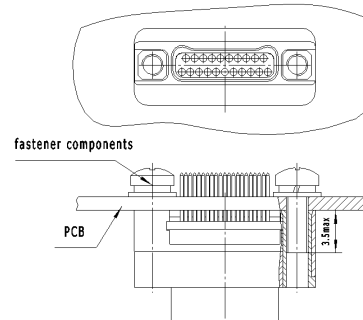
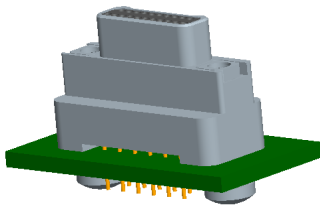
R70-2E2-XXX-321-TH

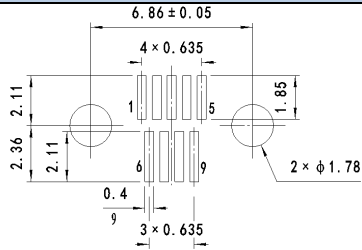
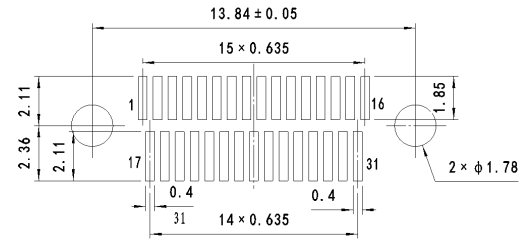
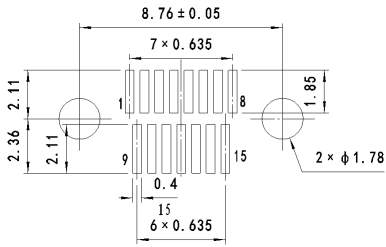
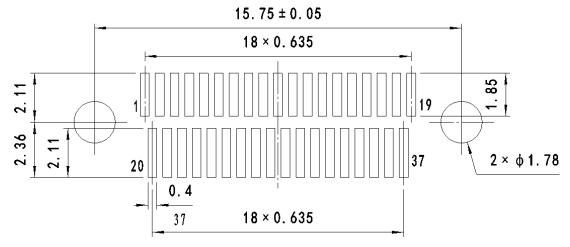
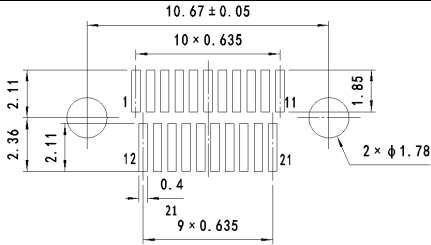
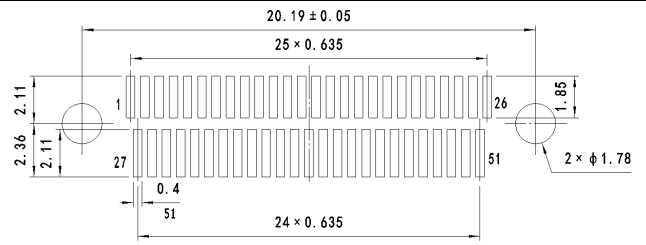
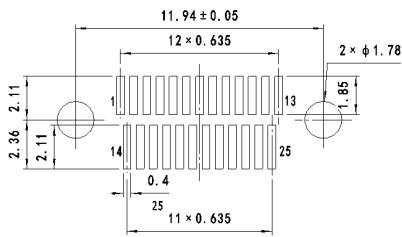
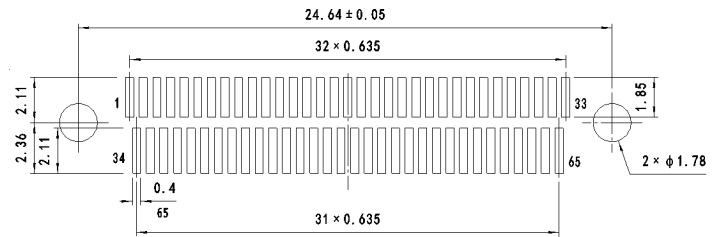
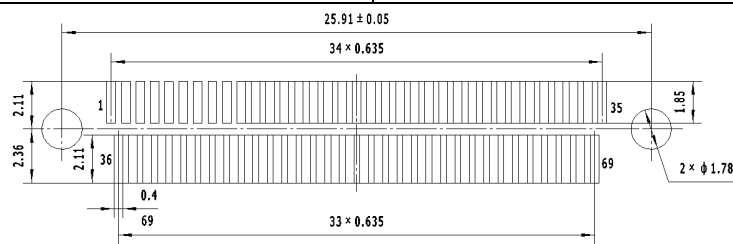
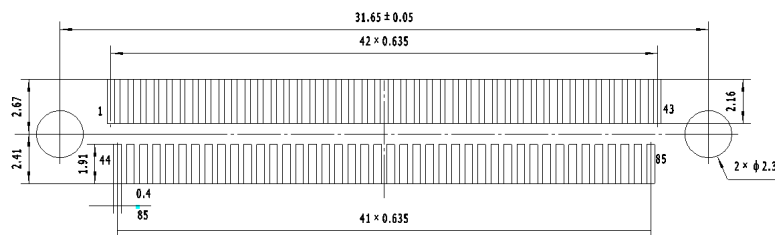


R70-2F2-XXX-431-TH



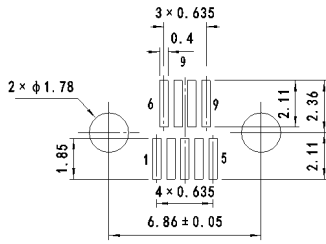
R70-2G2-XXX-131-TH



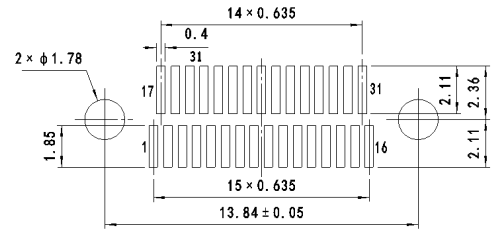
RECOMMEND PCB LAYOUT
R70-2A2-XXX-121-TH (VERTICAL SURFACE MOUNTING PLUG) PCB LAYOUT – P DIRECTION

R70-2A2-009-121-TH

R70-2A2-031-121-TH

R70-2A2-015-121-TH

R70-2A2-037-121-TH

R70-2A2-021-121-TH

R70-2A2-051-121-TH

R70-2A2-025-121-TH

R70-2A2-065-121-TH

R70-2A2-069-121-TH

R70-2A2-085-121-TH



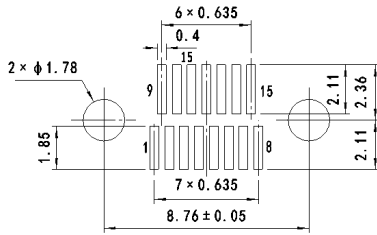
R70-2B2-XXX-221-TH (VERTICAL SURFACE MOUNTING RECEPTACLE) PCB LAYOUT – P DIRECTION



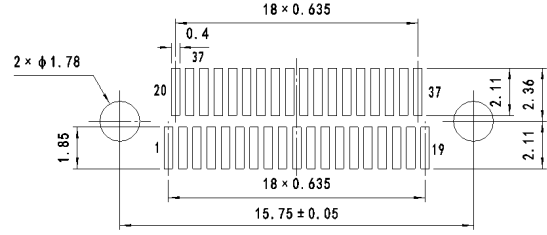
R70-2B2-009-221-TH



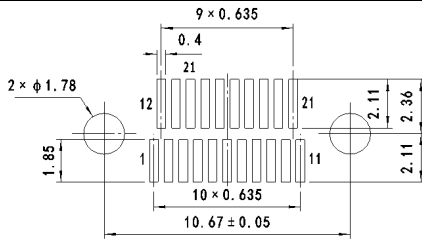
R70-2B2-031-221-TH



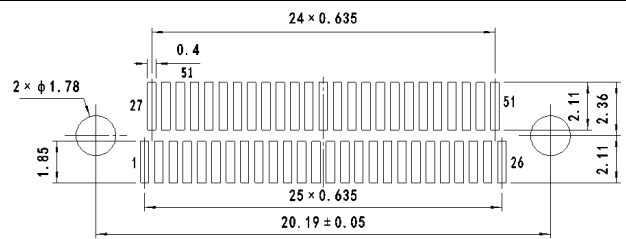
R70-2B2-015-221-TH



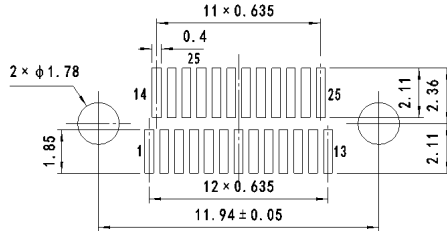
R70-2B2-037-221-TH



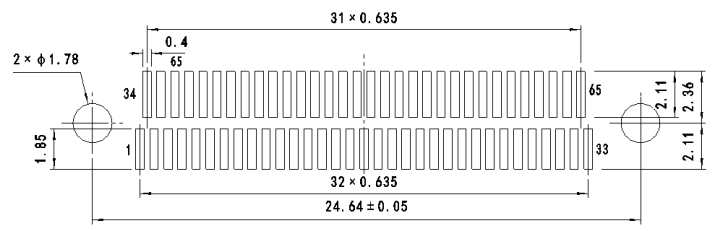
R70-2B2-021-221-TH



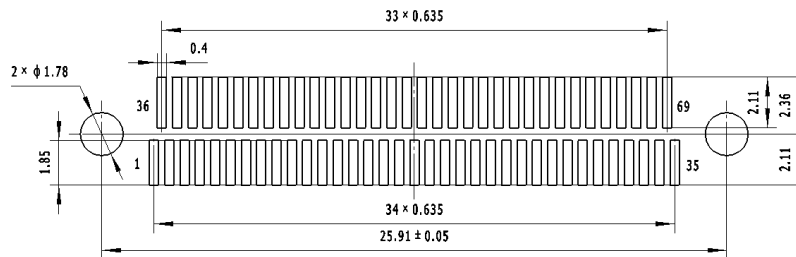
R70-2B2-051-221-TH



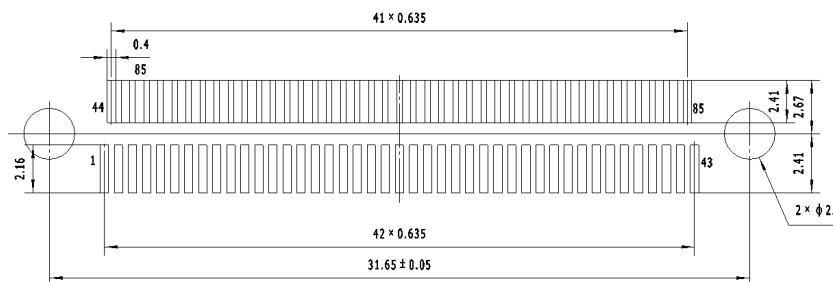
R70-2B2-025-221-TH



R70-2B2-065-221-TH



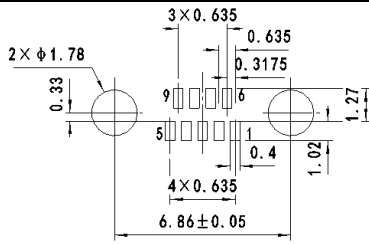
R70-2B2-069-221-TH



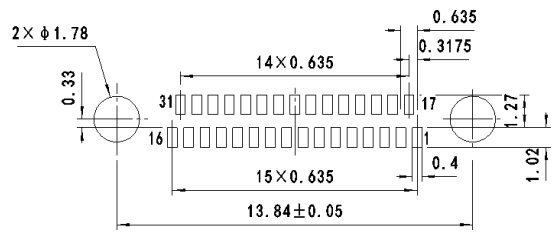
R70-2B2-085-221-TH



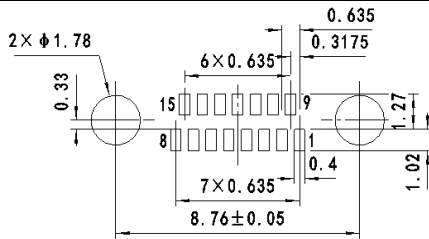
R70-2C2-XXX-121-TH (HORIZONTAL SURFACE MOUNTING PLUG) PCB LAYOUT



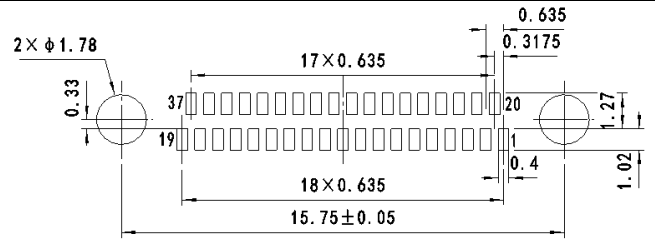
R70-2C2-009-121-TH



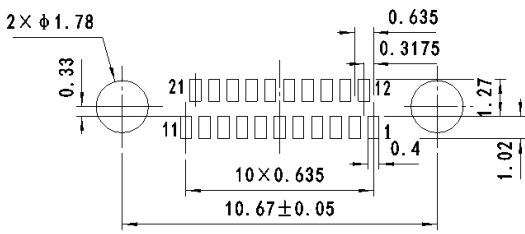
R70-2C2-031-121-TH



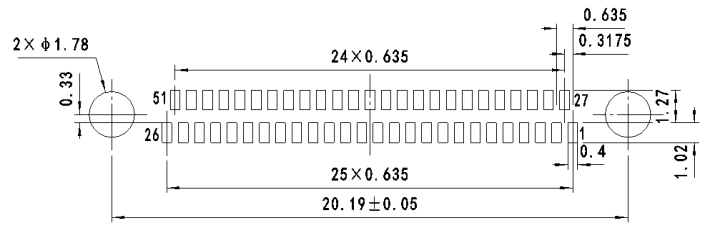
R70-2C2-015-121-TH



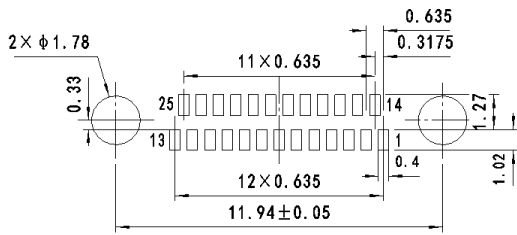
R70-2C2-037-121-TH



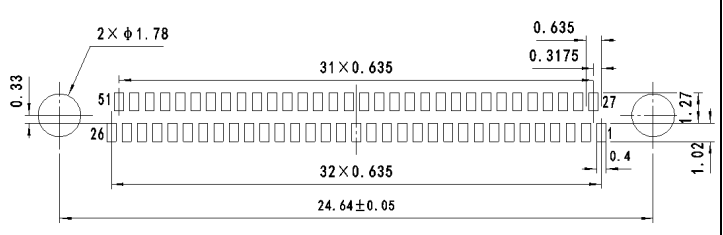
R70-2C2-021-121-TH



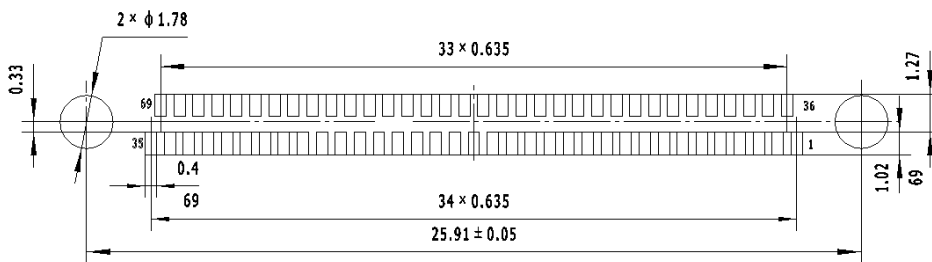
R70-2C2-051-121-TH



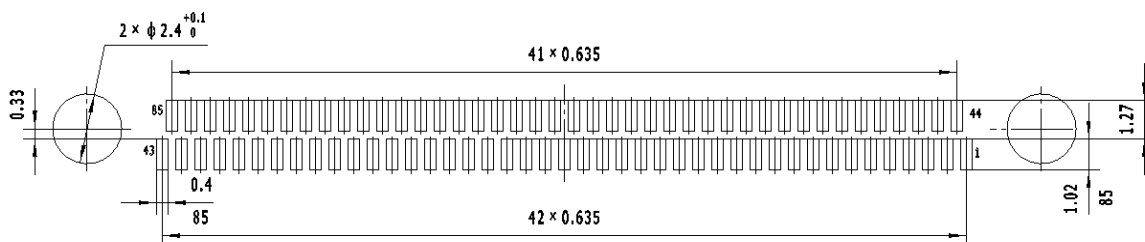
R70-2C2-025-121-TH



R70-2C2-065-121-TH



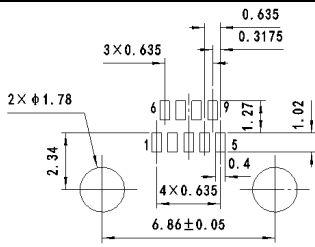
R70-2C2-069-121-TH



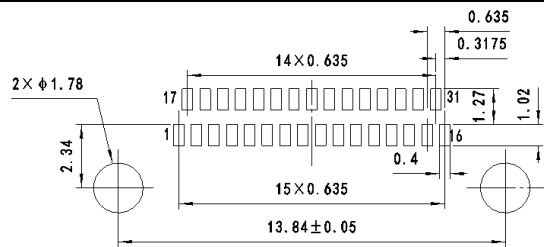
R70-2C2-085-121-TH



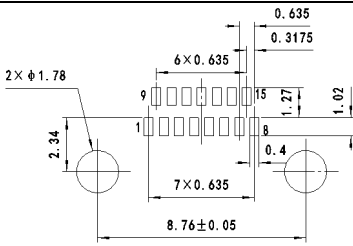
R70-2D2-XXX-221-TH (HORIZONTAL SURFACE MOUNTING RECEPTACLE) PCB LAYOUT



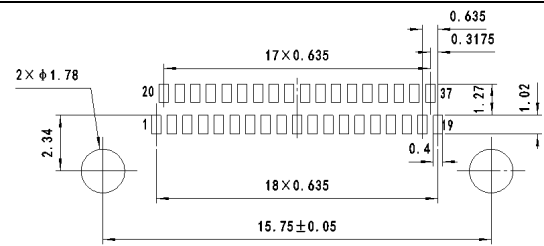
R70-2D2-009-221-TH



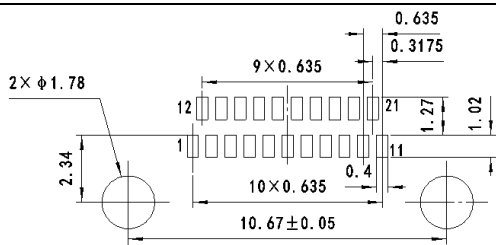
R70-2D2-031-221-TH



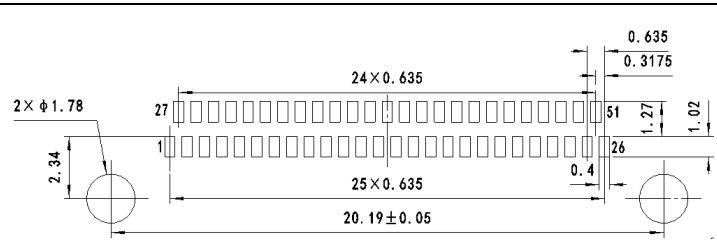
R70-2D2-015-221-TH



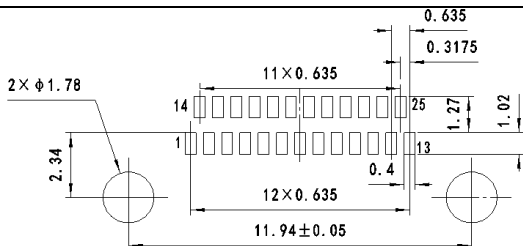
R70-2D2-037-221-TH



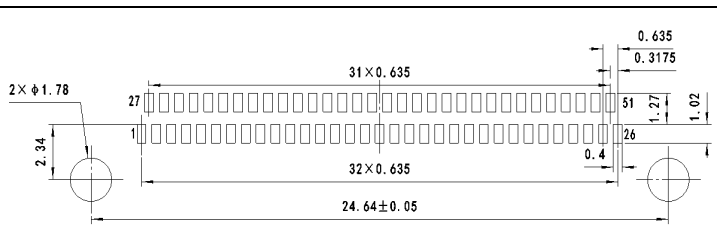
R70-2D2-021-221-TH



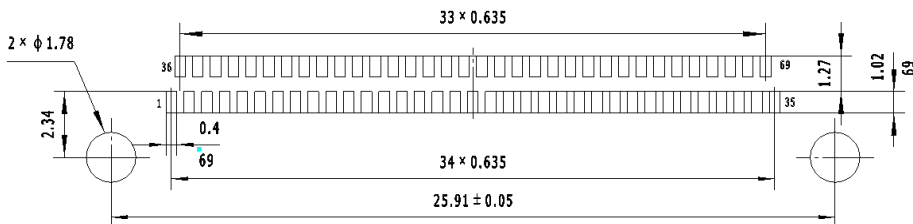
R70-2D2-051-221-TH



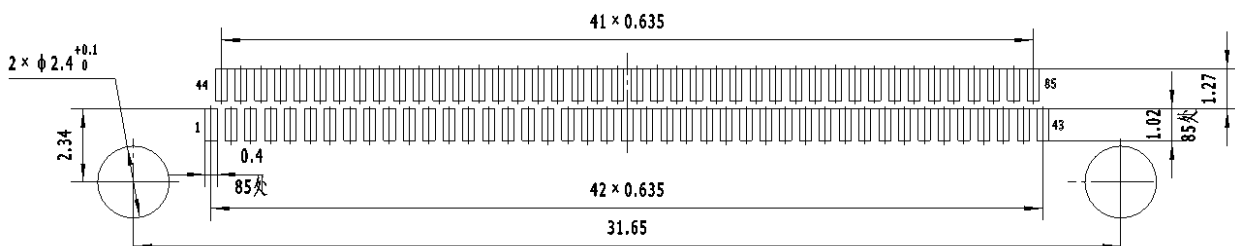
R70-2D2-025-221-TH



R70-2D2-065-221-TH



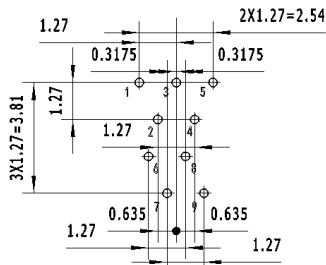
R70-2D2-069-221-TH



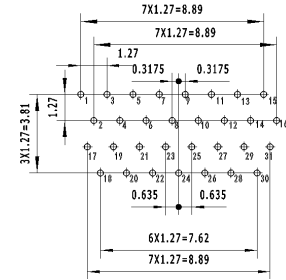
R70-2D2-085-221-TH



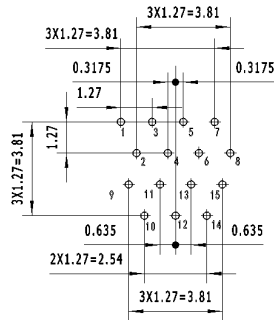
R70-2E2-XXX-321/331/341-JC (RIGHT ANGLE PLUG) PCB LAYOUT – P DIRECTION RECOMMEND HOLE DIMENSION: $\Phi 0.33$ °



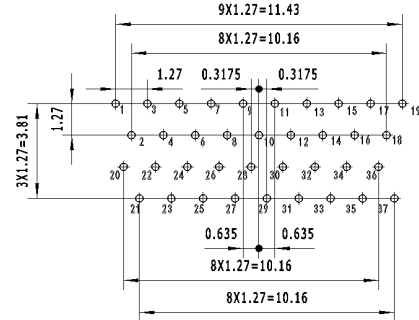
R70-2E2-009-321-JC



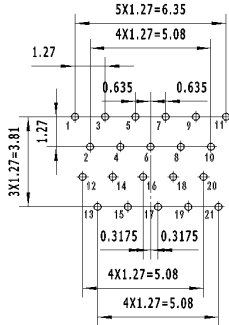
R70-2E2-031-321-JC



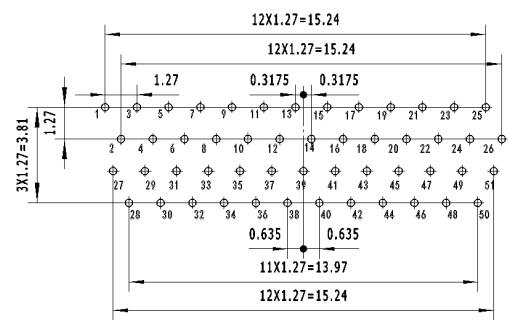
R70-2E2-015-321-JC



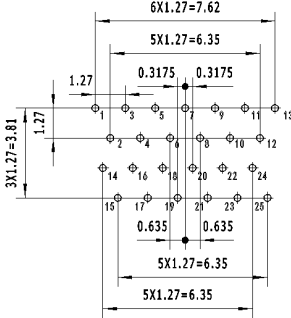
R70-2E2-037-321-JC



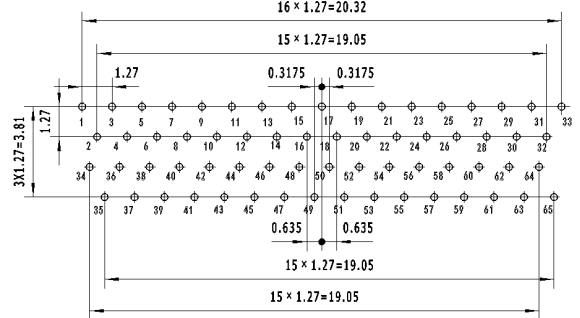
R70-2E2-021-321-JC



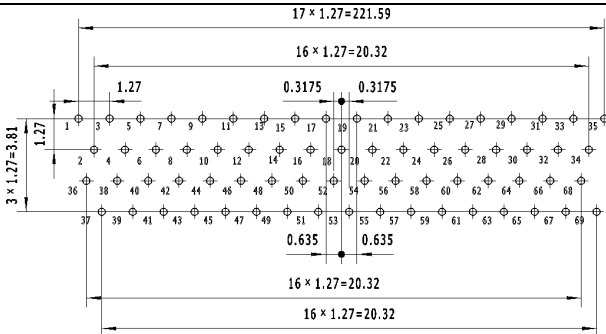
R70-2E2-051-321-JC



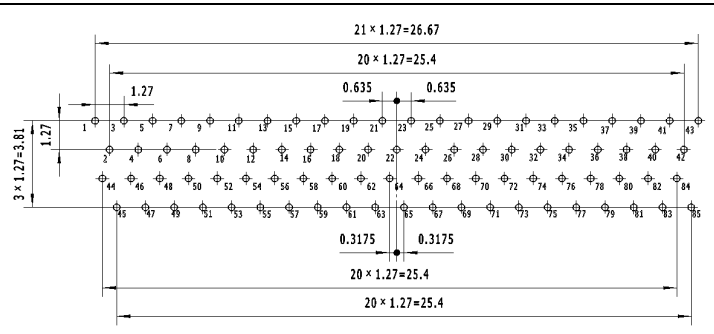
R70-2E2-025-321-JC



R70-2E2-065-321-JC



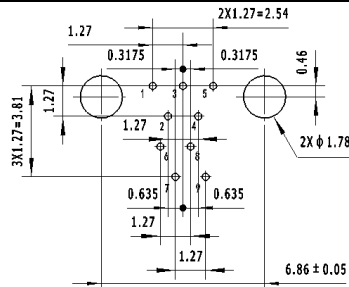
R70-2E2-069-321-JC



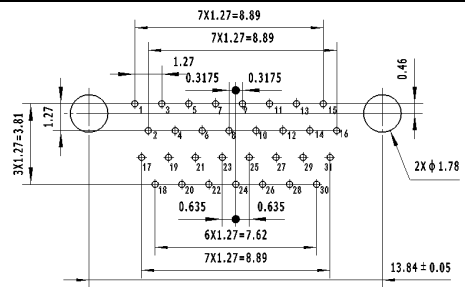
R70-2E2-085-321-JC



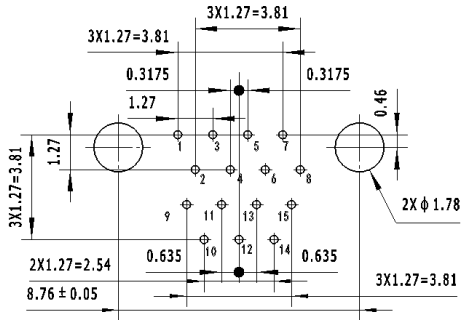
R70-2E2-XXX-321/331/341-TH (RIGHT ANGLE PLUG) PCB LAYOUT – P DIRECTION RECOMMEND HOLE DIMENSION: $\Phi 0.33$



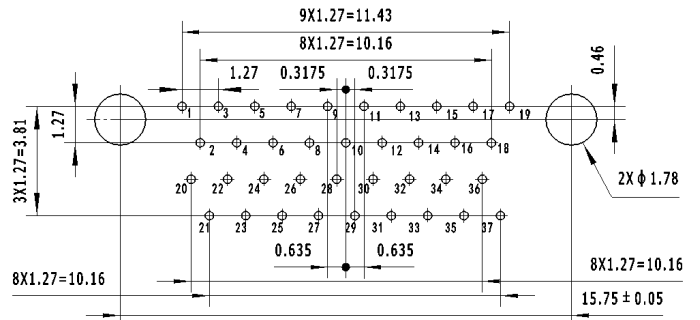
R70-2E2-009-321-TH



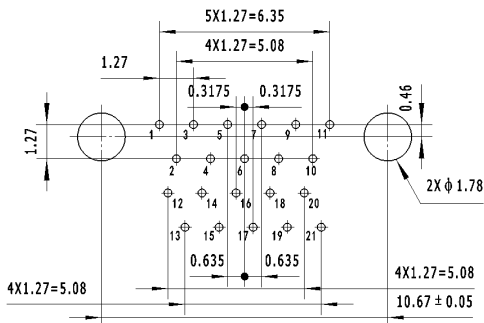
R70-2E2-031-321-TH



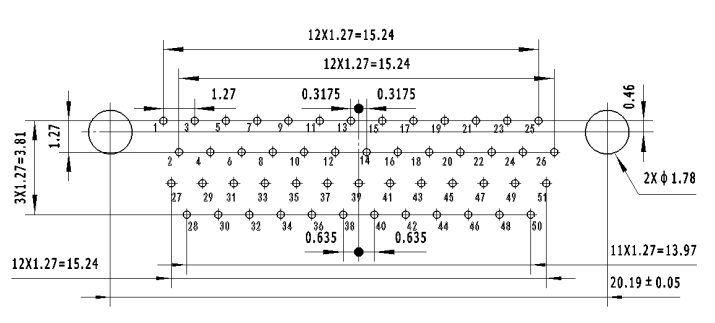
R70-2E2-015-321-TH



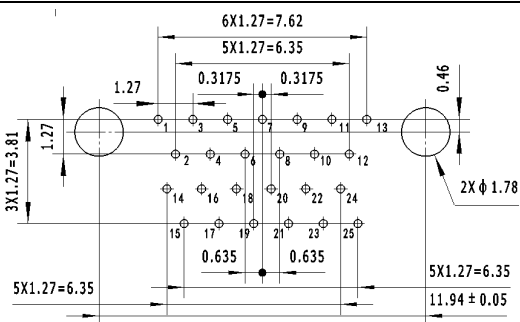
R70-2E2-037-321-TH



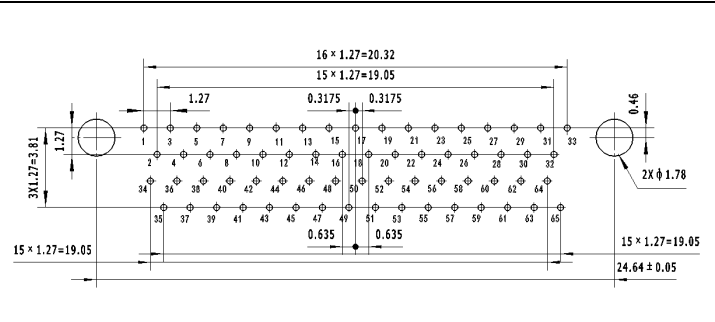
R70-2E2-021-321-TH



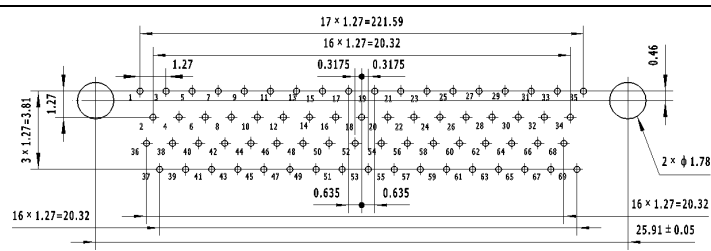
R70-2E2-051-321-TH



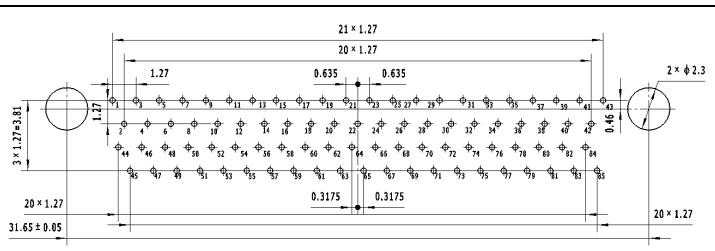
R70-2E2-025-321-TH



R70-2E2-065-321-TH



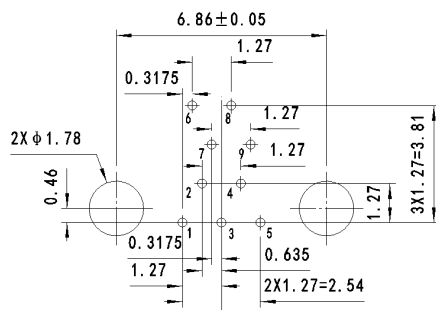
R70-2E2-069-321-TH



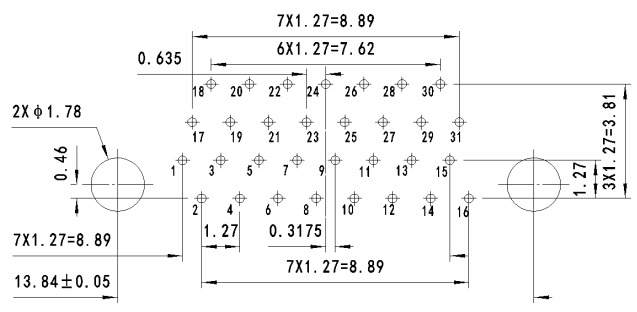
R70-2E2-085-321-TH



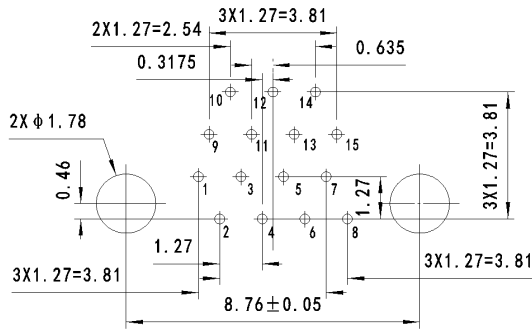
R70-2F2-XXX-431/441/451-TH (RIGHT ANGLE RECEPTACLE) PCB LAYOUT – P DIRECTION RECOMMEND HOLE DIMENSION: $\Phi 0.33$ ^{+0.05}



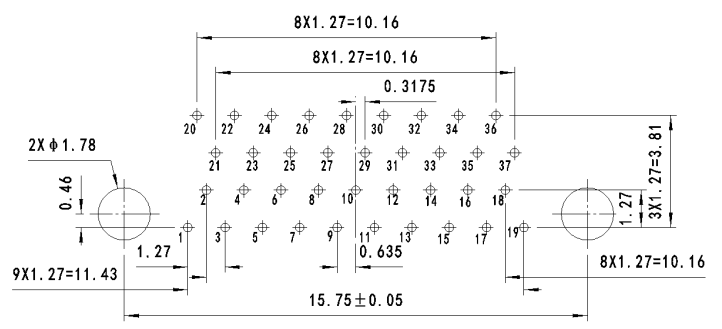
R70-2F2-009-431-TH



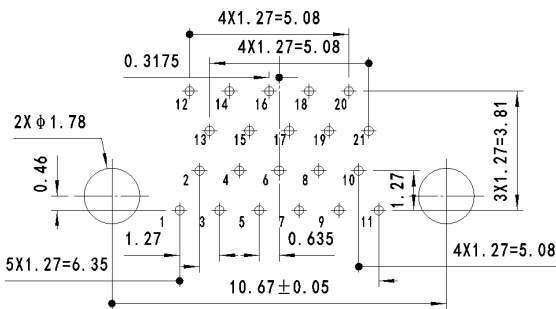
R70-2F2-031-431-TH



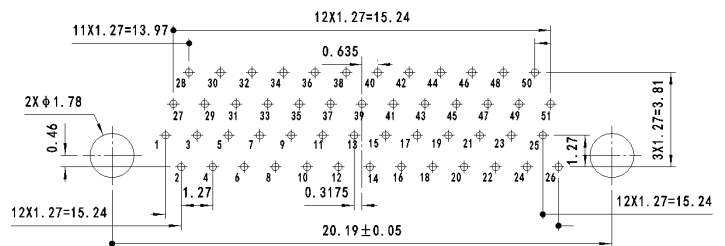
R70-2F2-015-431-TH



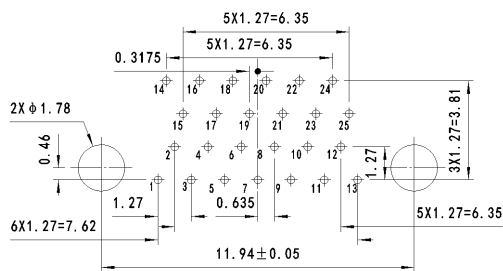
R70-2F2-037-431-TH



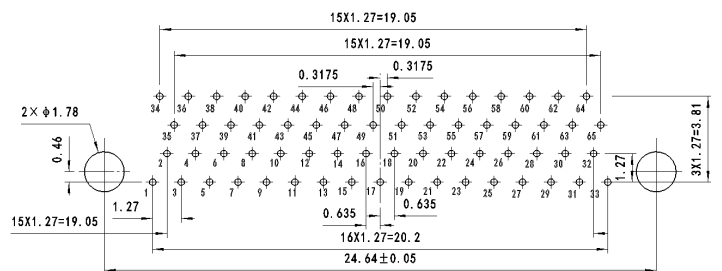
R70-2F2-021-431-TH



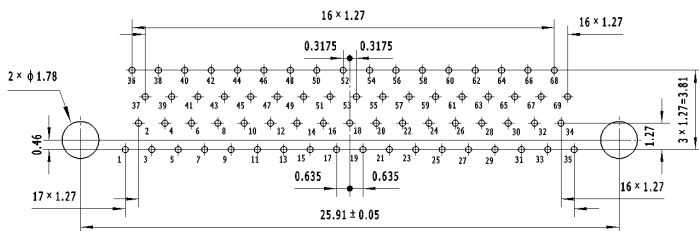
R70-2F2-051-431-TH



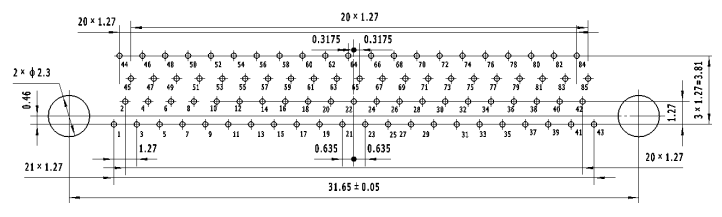
R70-2F2-025-431-TH



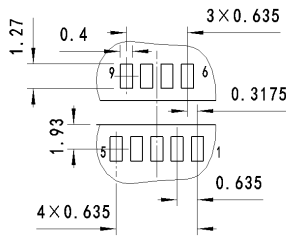
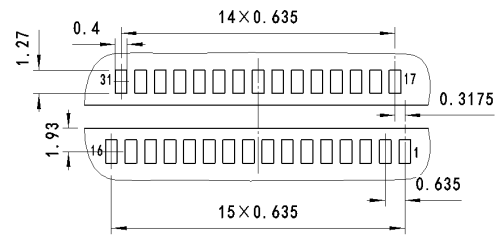
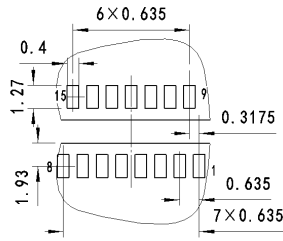
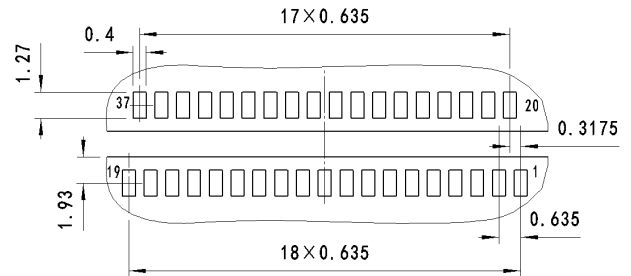
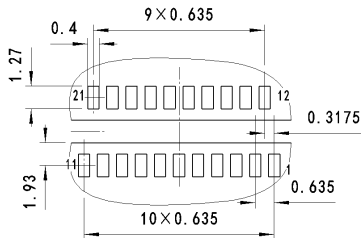
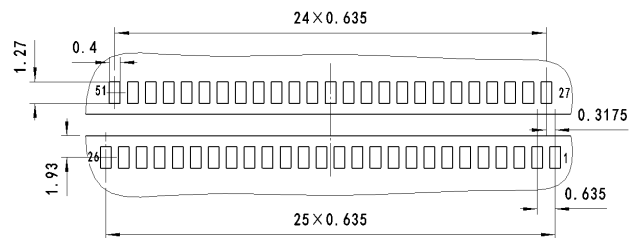
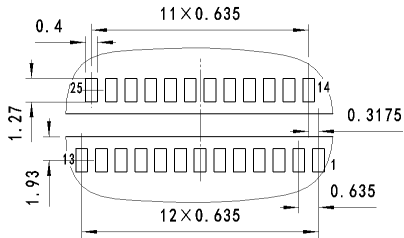
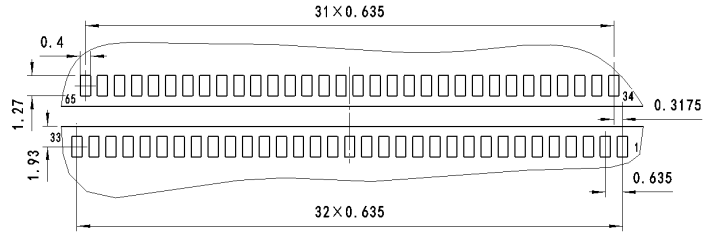
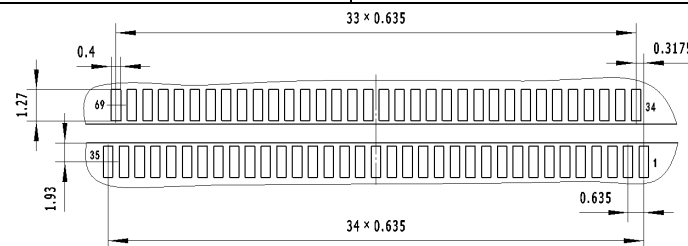
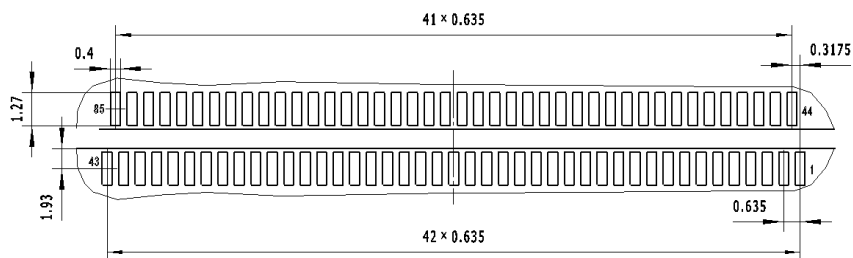
R70-2F2-065-431-TH



R70-2F2-069-431-TH

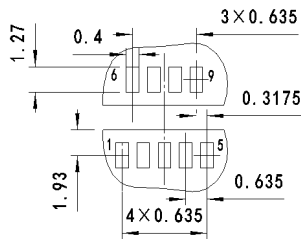


R70-2F2-085-431-TH

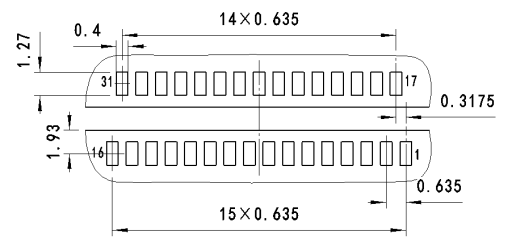
R70-212-XXX-121-JC (STRADDLE SURFACE MOUNTING PLUG) PCB LAYOUT

R70- 212-009-121-JC

R70- 212-031-121-JC

R70- 212-015-121-JC

R70- 212-037-121-JC

R70- 212-021-121-JC

R70-212-051-121-JC

R70- 212-025-121-JC

R70- 212-065-121-JC

R70-212-069-121-JC

R70- 212-085-121-JC



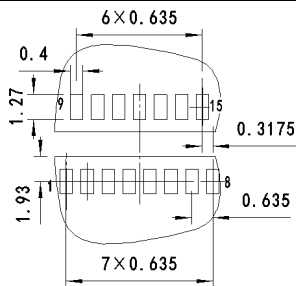
R70-222-XXX-221-TH (STRADDLE SURFACE MOUNTING RECEPTACLE) PCB LAYOUT



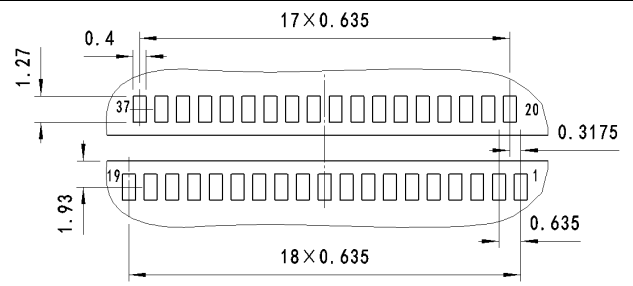
R70-222-009-221-TH



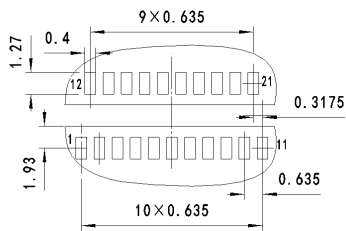
R70-222-031-221-TH



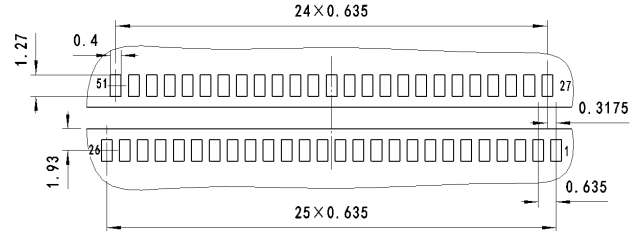
R70-222-015-221-TH



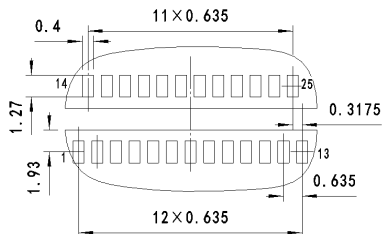
R70-222-037-221-TH



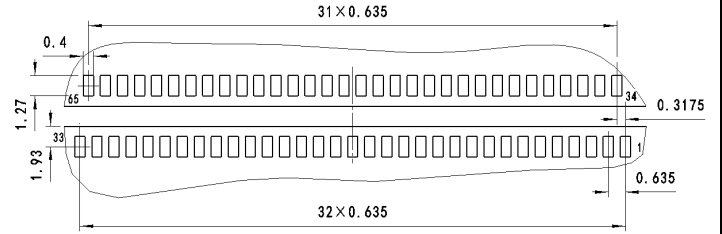
R70-222-021-221-TH



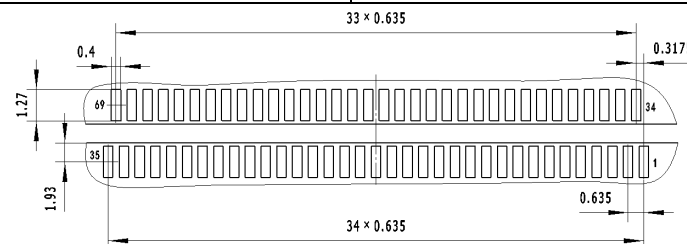
R70-222-051-221-TH



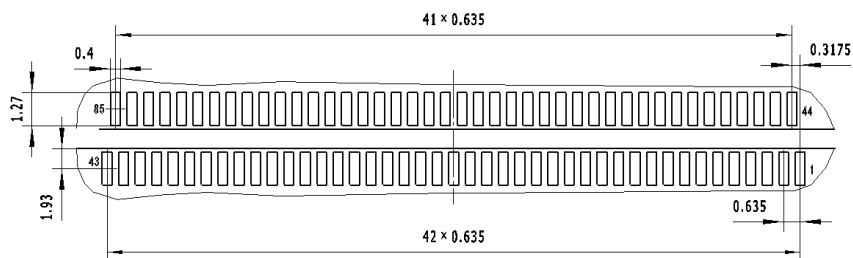
R70-222-025-221-TH



R70-222-065-221-TH

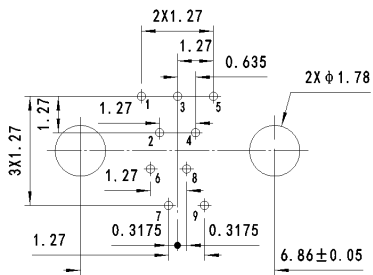


R70-222-069-221-TH

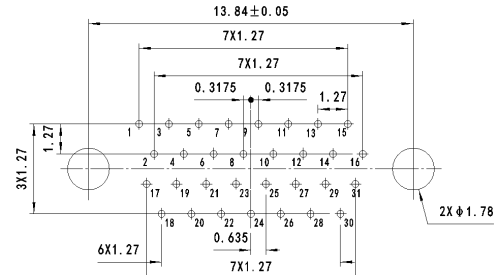


R70-222-085-221-TH

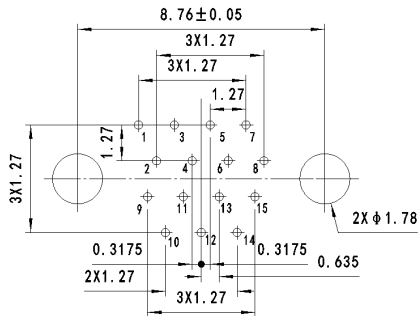
R70-2G2-XXX-131/141/151-TH (STRAIGHT PLUG) PCB LAYOUT – P DIRECTION RECOMMEND HOLE DIMENSION: $\Phi 0.33$ °



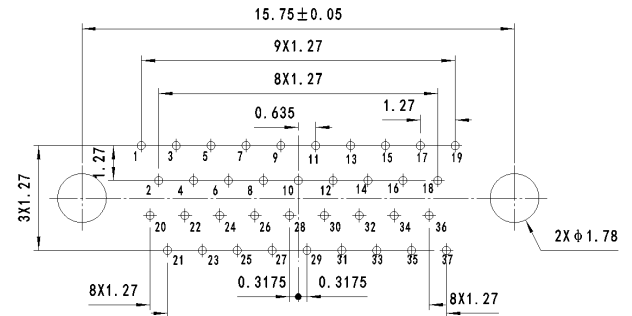
R70-2G2-009-131-TH



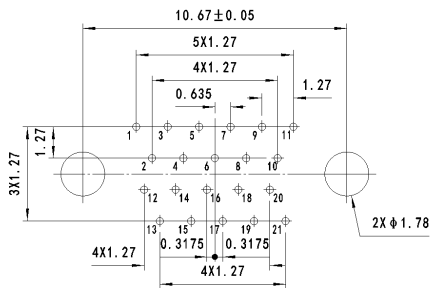
R70-2G2-031-131-TH



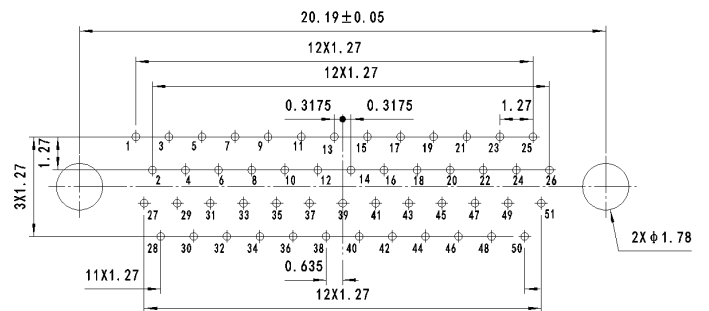
R70-2G2-015-131-TH



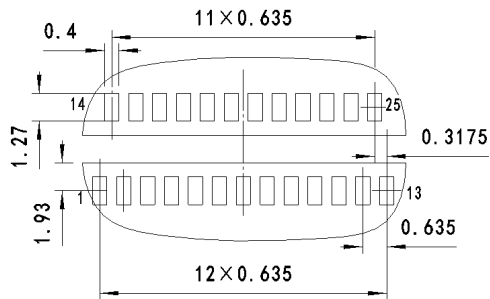
R70-2G2-037-131-TH



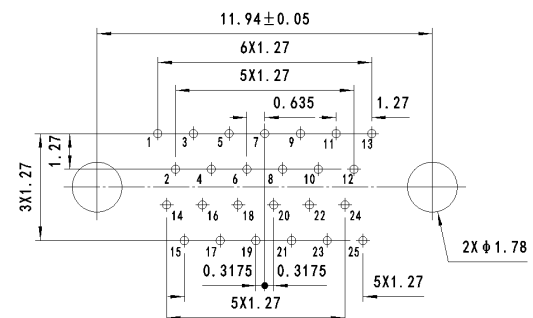
R70-2G2-021-131-TH



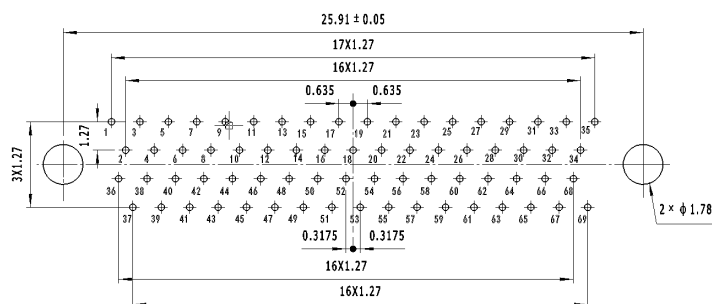
R70-2G2-051-131-TH



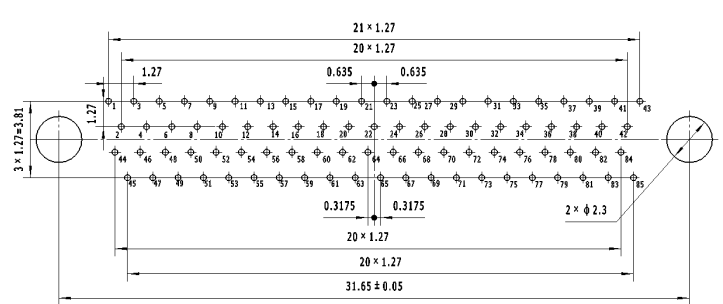
R70-2G2-025-131-TH



R70-2G2-065-131-TH



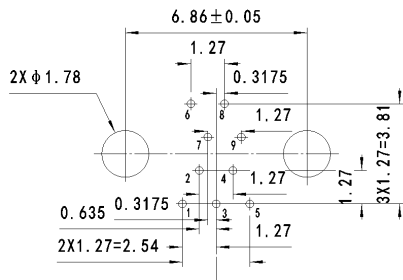
R70-2G2-069-131-TH



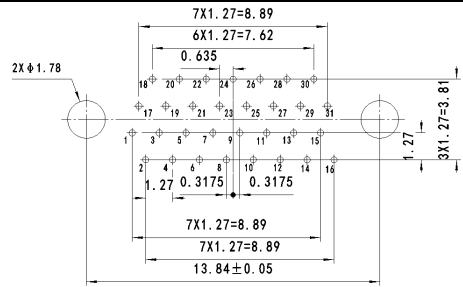
R70-2G2-085-131-TH



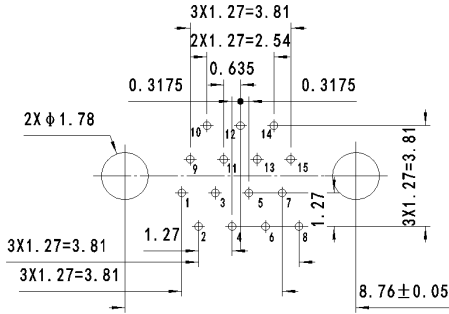
R70-2H2-XXX-231/241/251-TH (STRAIGHT RECEPTACLE) PCB LAYOUT – P DIRECTION RECOMMEND HOLE DIMENSION: $\Phi 0.33$



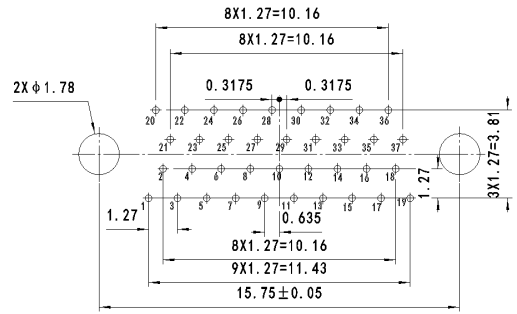
R70-2H2-009-231-TH



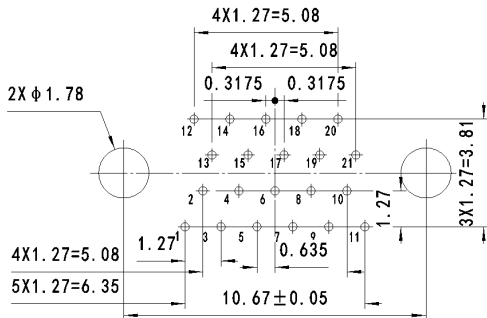
R70-2H2-031-231-TH



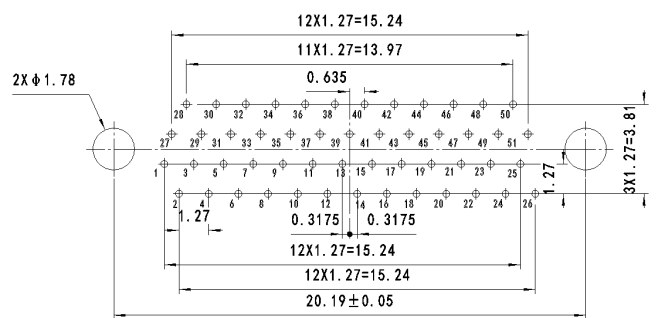
R70-2H2-015-231-TH



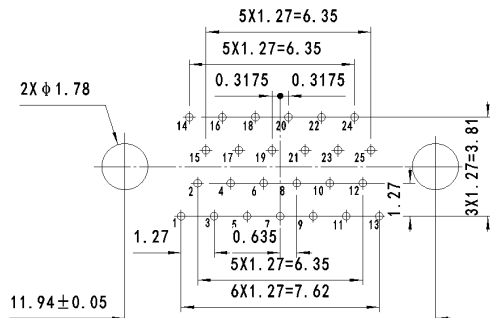
R70-2H2-037-231-TH



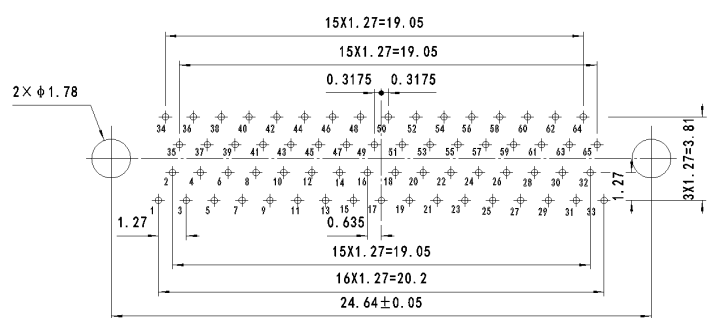
R70-2H2-021-231-TH



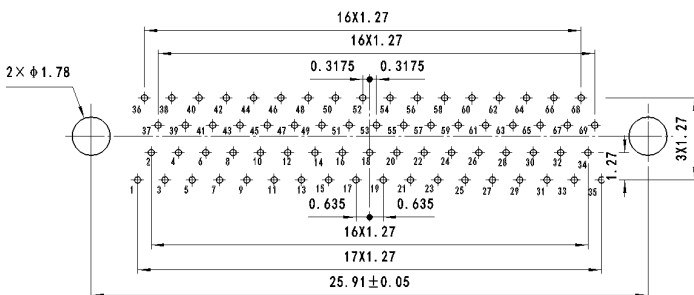
R70-2H2-051-231-TH



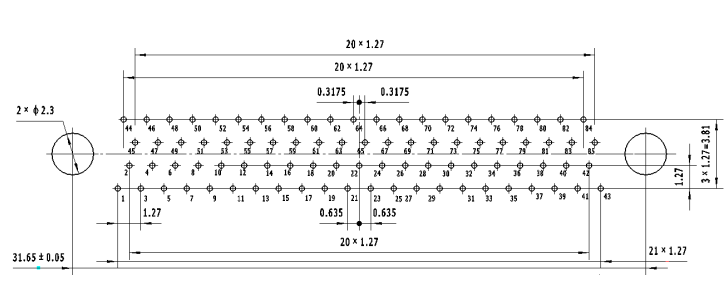
R70-2H2-025-231-TH



R70-2H2-065-231-TH



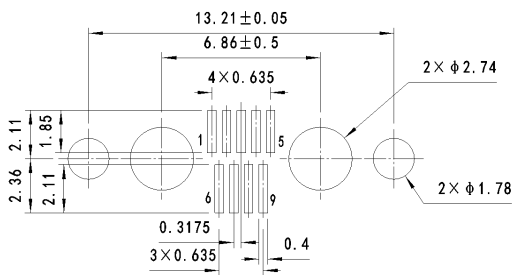
R70-2H2-069-231-TH



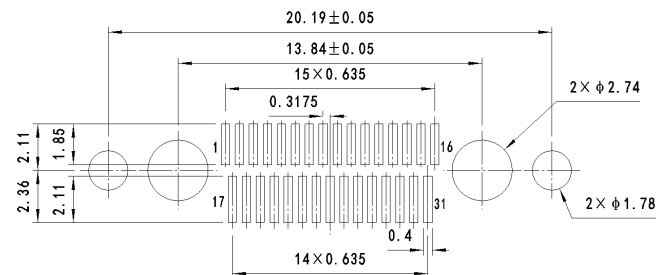
R70-2H2-085-231-TH



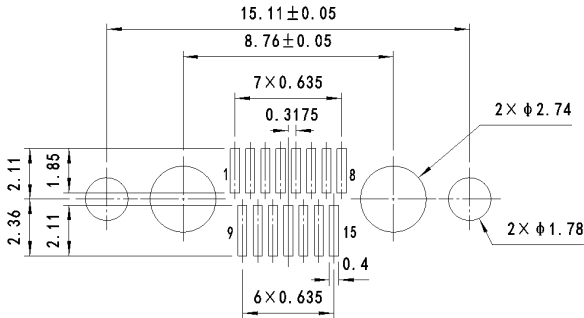
R70-2K2-XXX-121-JC (VERTICAL SURFACE MOUNTING PLUG-WITH MOUNTING EARS) PCB LAYOUT – P DIRECTION



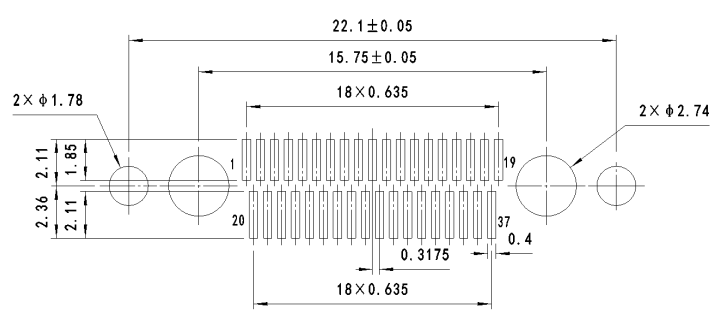
R70-2K2-009-121-JC



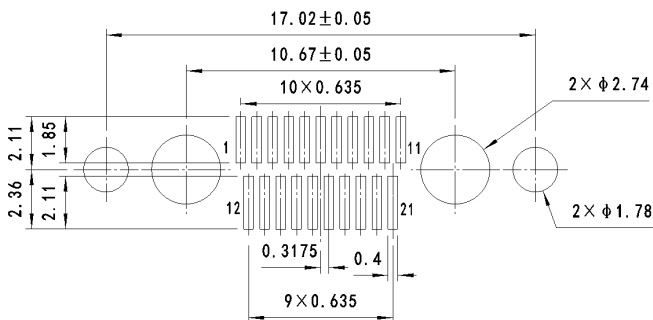
R70-2K2-031-121-JC



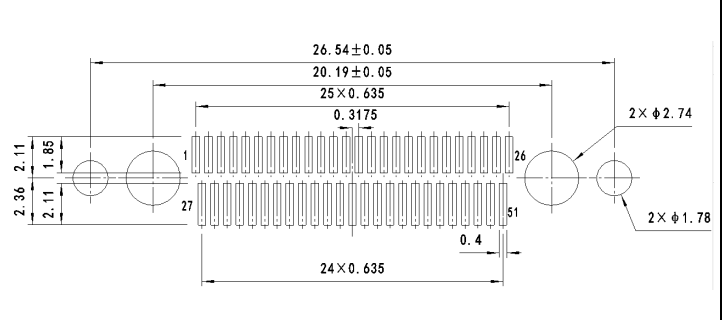
R70-2K2-015-121-JC



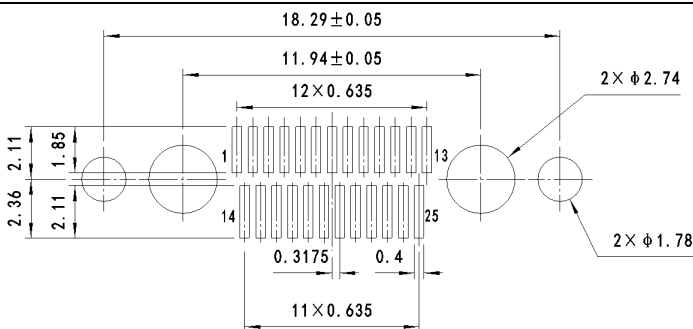
R70-2K2-037-121-JC



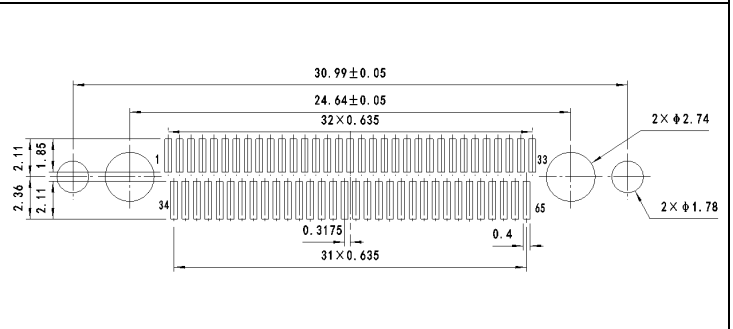
R70-2K2-021-121-JC



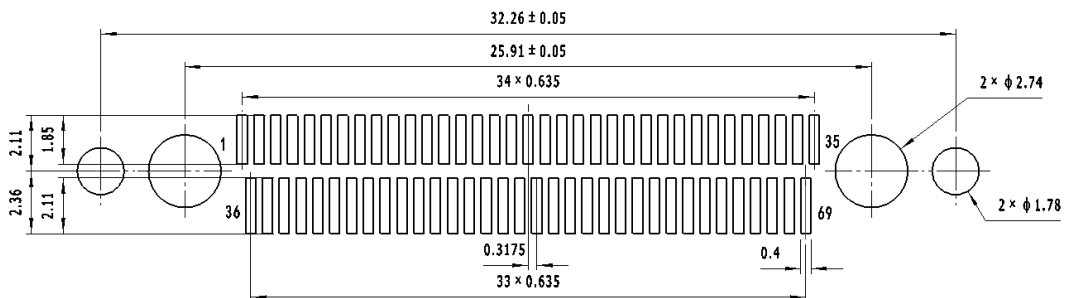
R70-2K2-051-121-JC



R70-2K2-025-121-JC



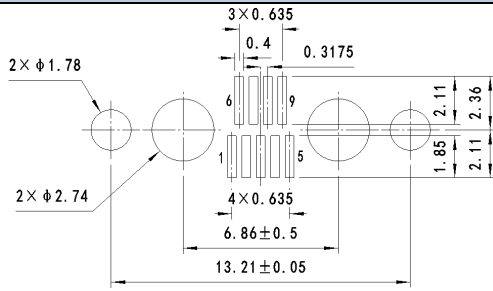
R70-2K2-065-121-JC



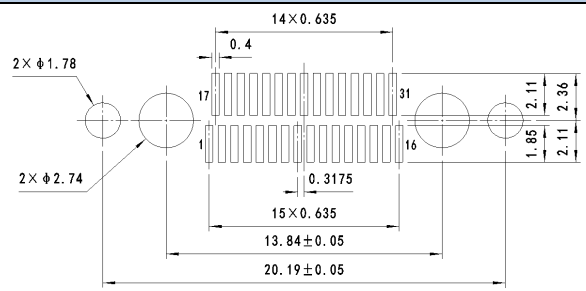
R70-2K2-069-121-JC



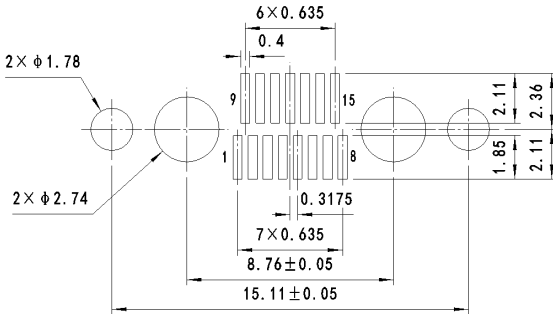
R70-2L2-XXX-221-JC (VERTICAL SURFACE MOUNTING RECEPTACLE-WITH MOUNTING EARS) PCB LAYOUT – P DIRECTION



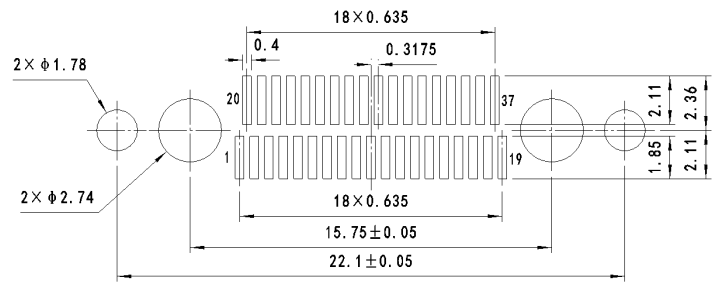
R70-2L2-009-221-JC



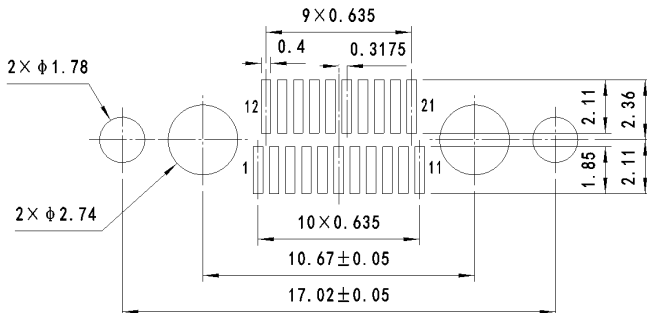
R70-2L2-031-221-JC



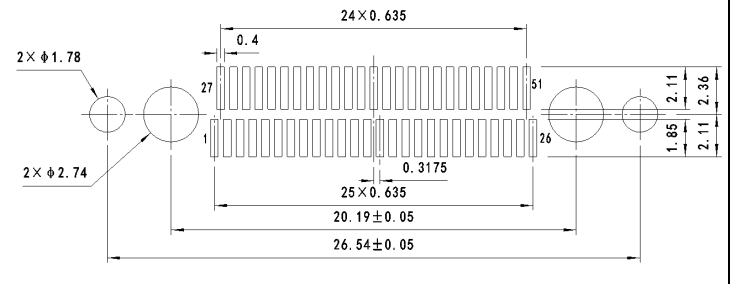
R70-2L2-015-221-JC



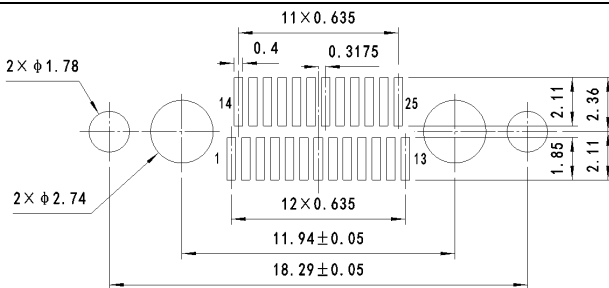
R70-2L2-037-221-JC



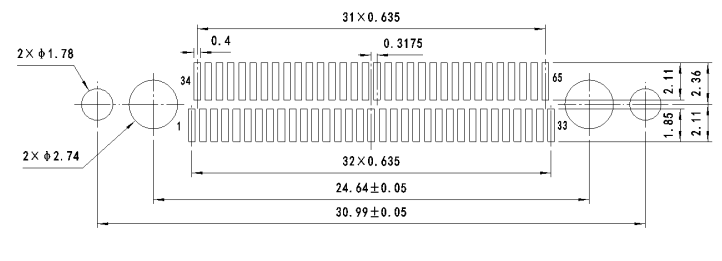
R70-2L2-021-221-JC



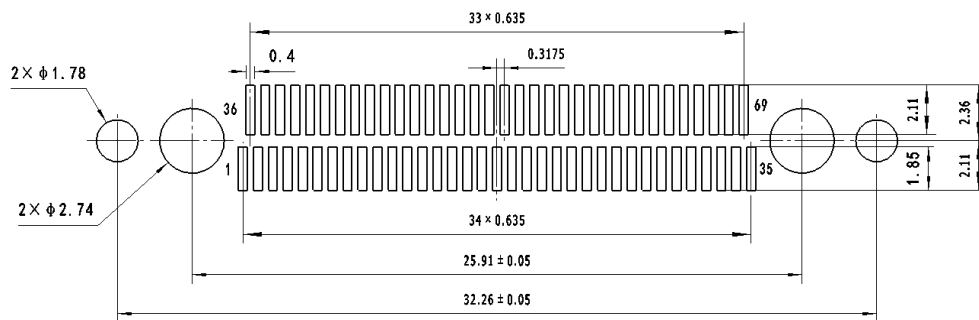
R70-2L2-051-221-JC



R70-2L2-025-221-JC



R70-2L2-065-221-JC



R70-2L2-069-221-JC