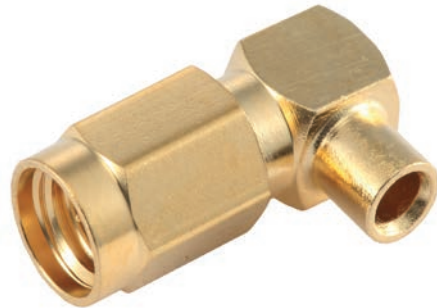


SSMA

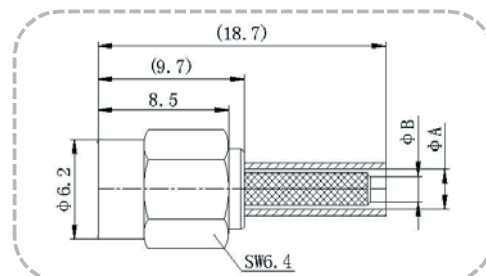
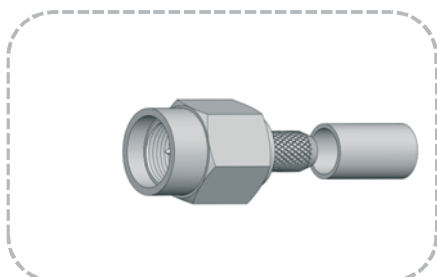
SSMA series is small type thread connectors manufactured according to MIL-C38012, IEC169-18 and CECC22140. Its characteristics are as follows: small dimensions, strong structure, wide working frequency, high reliability. It is widely used in mobile telecommunication equipments.



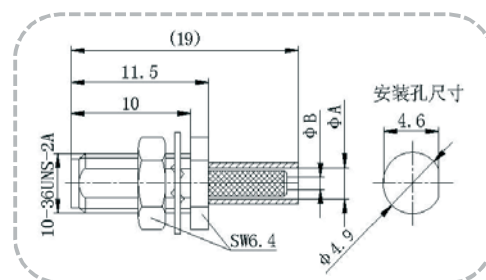
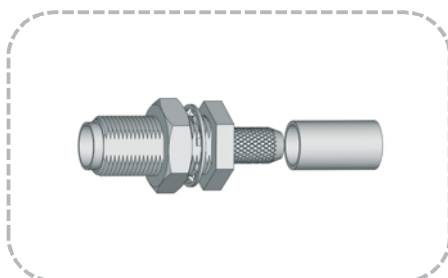
Electric Data		
Characteristic Impedance	50 ohm	
Frequency Range	0~35 GHz	
Working Voltage	250 VRMS(max at sea level)	
Dielectric Withstanding Voltage	750 VRMS(min at sea level)	
VSWR	≤ 1.07+0.1F(GHz)	
Contact Resistance	Inner: 4 milliohms(max) Outer: 2.5 milliohms(max)	
Insulation Resistance	1000 megohms(min)	
Mechanical Data		
Durability Mating	500 Cycles min.	
Material Data		
Connector Parts	Materials	Plating Finish
Body	Brass	Gold
Male Pin	Brass	Gold
Insulators	PTFE	N/A
Environmental Data		
Temperature Range	-55~+155℃	

Note: We can provide other materials and plating specifications according to customers' requirements

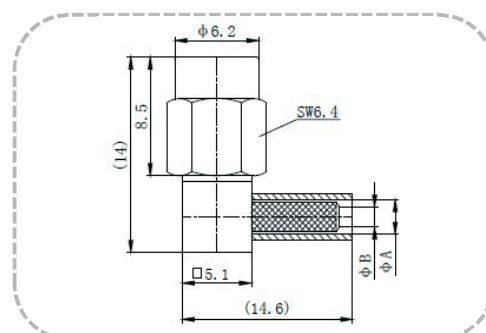
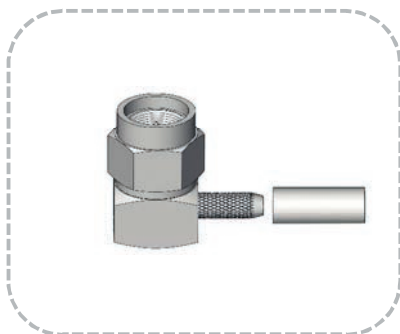
Part Number	Description	Cable Category	Notes
SSMA-PIC-215	SSMA Male Straight Crimp Type	2/50S(SFF-50-1,SYV-50-1,RG-178B/U,196/U)	A=2.5,B=1.0
SSMA-PIC-235		2.6/50S(SFF-50-1.5-1,RG-174/U,188A/U,316/U,LMR-100A)	A=2.8,B=1.6
SSMA-PIC-315		3/50S(SYV-50-2-1)	A=3.1,B=1.6



Part Number	Description	Cable Category	Notes
SSMA-JKC-215	SSMA Female Bulkhead Crimp Type	2/50S(SFF-50-1,SYV-50-1,RG-178B/U,196/U)	A=2.5,B=1.0
SSMA-JKC-235		2.6/50S(SFF-50-1.5-1,RG-174/U,188A/U,316/U,LMR-100A)	A=2.8,B=1.6
SSMA-JKC-315		3/50S(SYV-50-2-1)	A=3.1,B=1.6



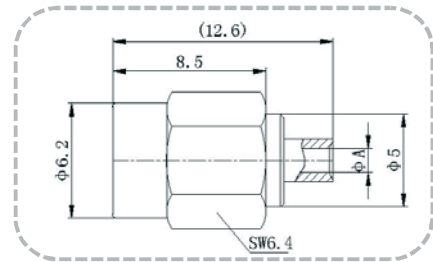
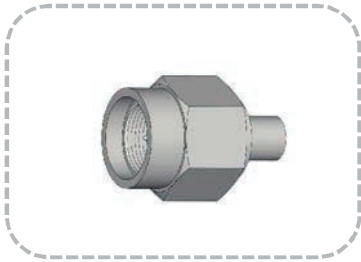
Part Number	Description	Cable Category	Notes
SSMA-PTC-215	SSMA Male Right Angle Crimp Type	2/50S(SFF-50-1,SYV-50-1,RG-178B/U,196/U)	A=2.5,B=1.0
SSMA-PTC-235		2.6/50S(SFF-50-1.5-1,RG-174/U,188A/U,316/U,LMR-100A)	A=2.8,B=1.6
SSMA-PTC-315		3/50S(SYV-50-2-1)	A=3.1,B=1.6





APMA

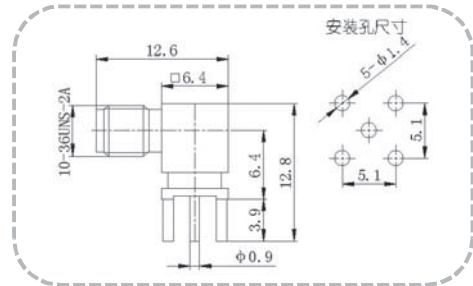
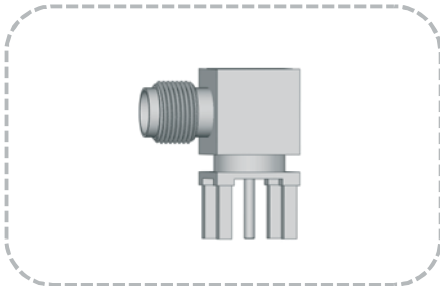
Part Number	Description	Cable Category	Notes
SSMA-PIS-004	SSMA Straight Male Solder For Semi-	047	A=1.2
SSMA-PIS-001	Rigid Cable	085(SFT-50-2-1,SM86,RG-405/U)	A=2.2



Part Number	Description
-------------	-------------

SSMA-JTB

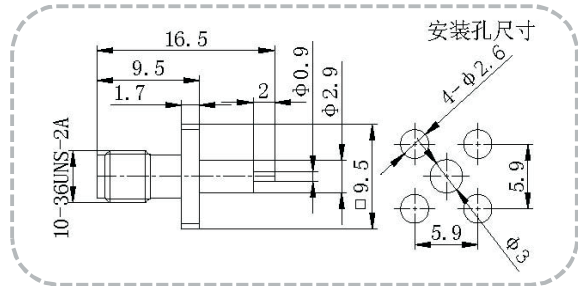
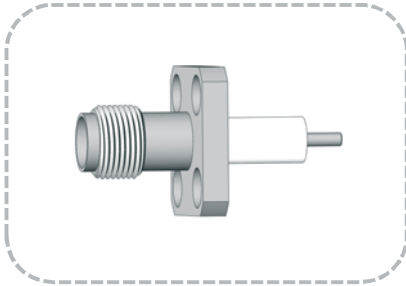
SSMA Female R/A PCB Mount



Part Number	Description
-------------	-------------

SSMA-JOM

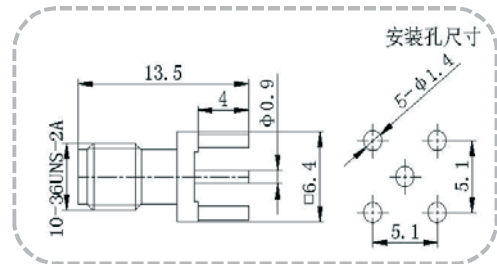
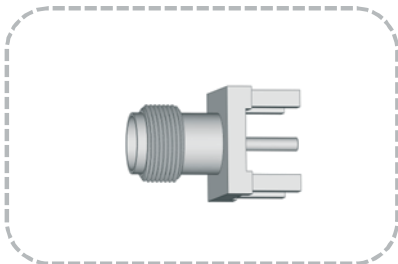
SSMA Female Flange Mount 4 Holes Solder Pot Terminal



Part Number	Description
-------------	-------------

SSMA-JIB

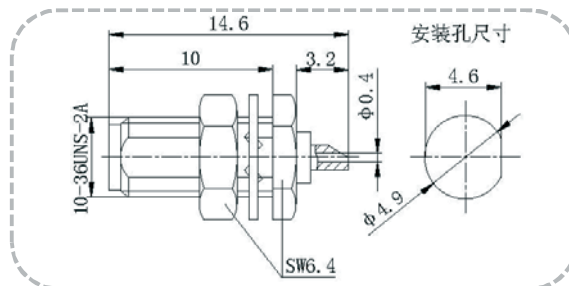
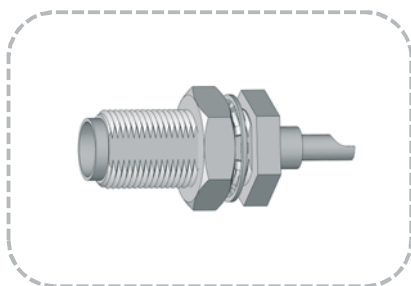
SSMA Female Straight PCB Mount



Part Number	Description
-------------	-------------

SSMA-JKM

SSMA Female Bulkhead Receptacle Solder Pot Terminal



Part Number	Description	Cable Category	Notes
-------------	-------------	----------------	-------

SSMA-JIS-004

SSMA Straight
Female Solder
For
Semi-Rigid Cable

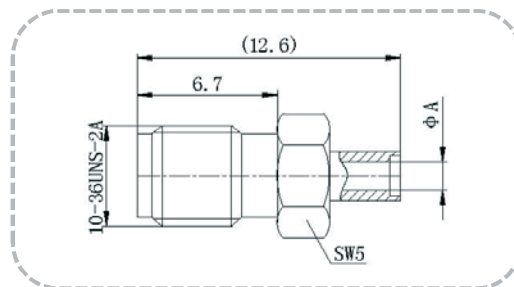
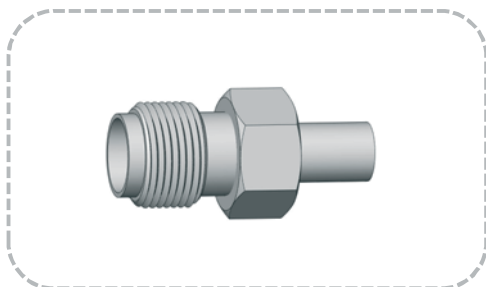
047

A=1.2

SSMA-JIS-001

085(SFT-50-2-1,SM86,RG-405/U)

A=2.2



Part Number	Description	Cable Category	Notes
-------------	-------------	----------------	-------

SSMA-JKS-004

SSMA Female
Bulkhead Solder For
Semi-Rigid Cable

047

A=1.2

SSMA-JKS-001

085(SFT-50-2-1,SM86,RG-405/U)

A=2.2

