

# 2,92

2.92 series products are developed based on SMA precision millimeter-wave connectors, are interchangeable with SMA series product docking, USES the air interface, has small volume, light weight, high use frequency, reliable connection, etc. The 2.92 series is represented by more than 10 variants.



Electric Data	
Characteristic Impedance	50 ohm
Frequency Range	DC....40GHz
Working Voltage	250 VRMS(max at sea level)
Dielectric Withstanding Voltage	750 VRMS(min at sea level)
VSWR	Straight: 1.3 (max)
Contact Resistance	Inner: <3 milliohms(max) Outer: <2 milliohms(max)
Insulation Resistance	> 5000 megohms(min)

Mechanical Data	
Engagement Force	3.4 lbs.max
Disengagement Force	4.5 lbs.max.
Center Contact Retention Force	4.0 lbs.max.
Durability Mating	500 Cycles min.

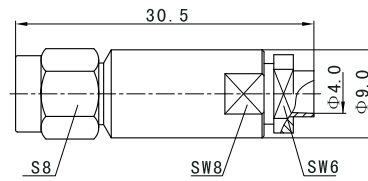
Material Data		
Connector Parts	Materials	Plating Finish
Body, Metal Fittings	Brass	Gold
Center Conductors	Brass	Gold
Insulators	PPO	N/A

Environmental Data	
Temperature Range	-55~+125°C

Note: We can provide other materials and plating specifications according to customers' requirements



# APMA

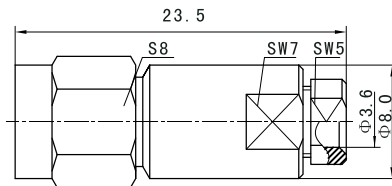


Part Number

2.92-L140

Suitable Cable

MS<sup>2</sup>-140

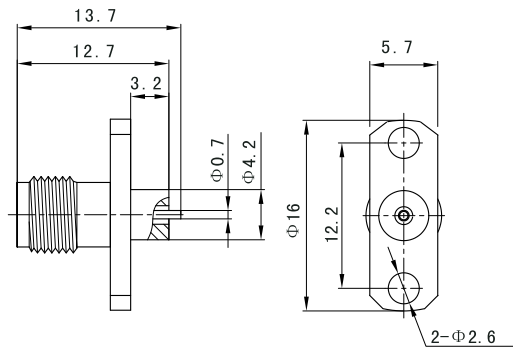


Part Number

2.92-LD3

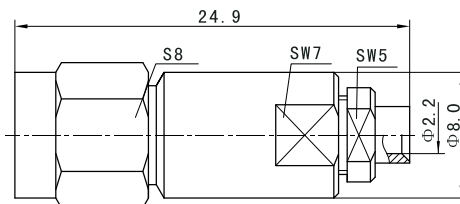
Suitable Cable

SFT-50-3-1  
RG402/U



Part Number

2.92-MHF3

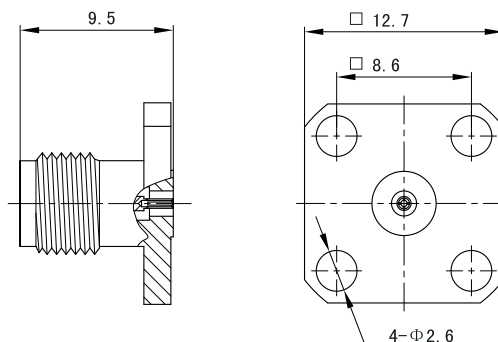
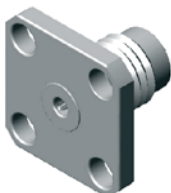


Part Number

2.92-LD2

Suitable Cable

SFT-50-2-1  
RG405/U



Part Number

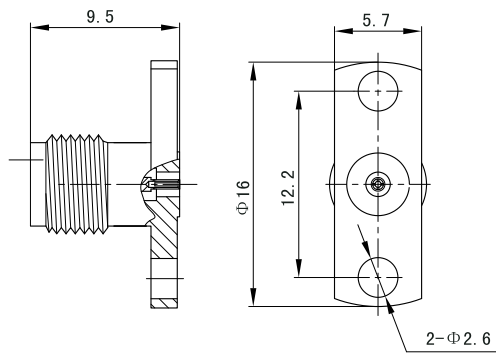
2.92-MHF21

Mate with  
the center contact

Φ0.30 ± 0.01



# APMA

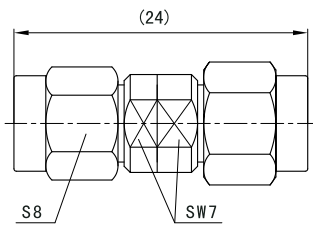


Part Number

Suitable Cable

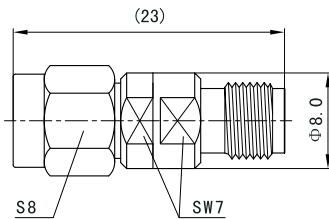
2.92-MHFI

$\Phi 0.30 \pm 0.01$



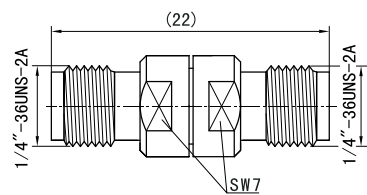
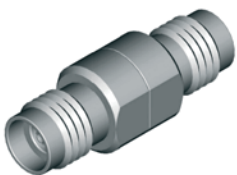
Part Number

2.92-LL



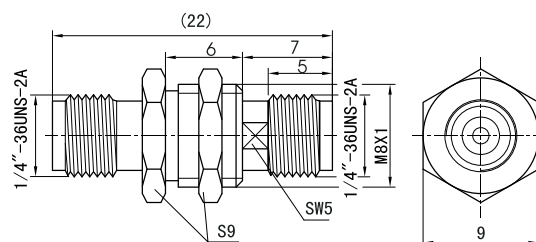
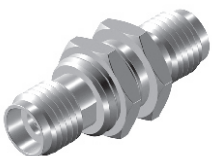
Part Number

2.92-LM



Part Number

2.92-MM



Part Number

2.92-MAM