

2,4

2.4 series products operating frequency up to 50GHz, interface and 1.85 series connector compatible with the use of air interface. With a small size, light weight, the use of high frequency, reliable connection and so on.

The 2.4 series is represented by more than 10 variants.

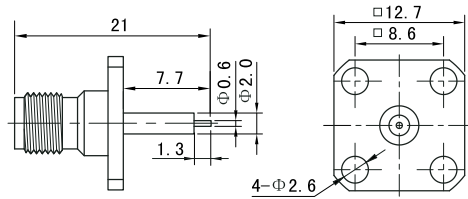
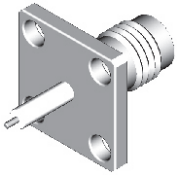


Electric Data		
Characteristic Impedance	50 ohm	
Frequency Range	DC....50GHz	
Working Voltage	250 VRMS(max at sea level)	
Dielectric Withstanding Voltage	750 VRMS(min at sea level)	
VSWR	Straight: 1.3 (max)	
Contact Resistance	Inner: <4 milliohms(max) Outer: <2.5 milliohms(max)	
Insulation Resistance	> 5000 megohms(min)	
Mechanical Data		
Engagement Force	3.4 lbs.max	
Disengagement Force	4.5 lbs.max.	
Center Contact Retention Force	4.0 lbs.max.	
Durability Mating	500 Cycles min.	
Material Data		
Connector Parts	Materials	Plating Finish
Body, Metal Fittings	Brass	Gold
Center Conductors	Brass	Gold
Insulators	MPPO, PEI	N/A
Environmental Data		
Temperature Range	-65~+125°C	

Note: We can provide other materials and plating specifications according to customers' requirements

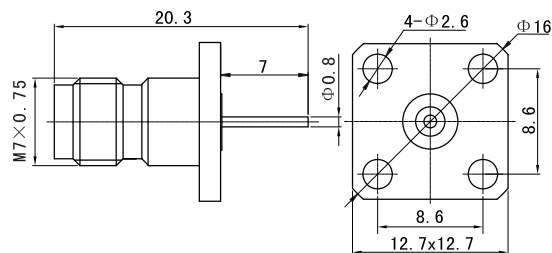
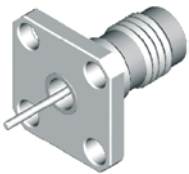


APMA



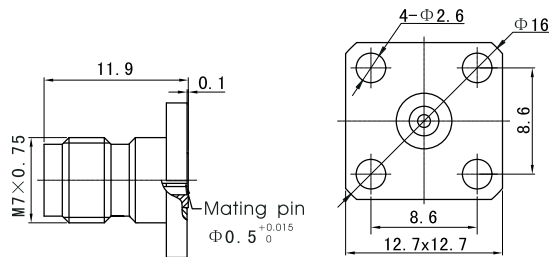
Part Number

2.4-MHF



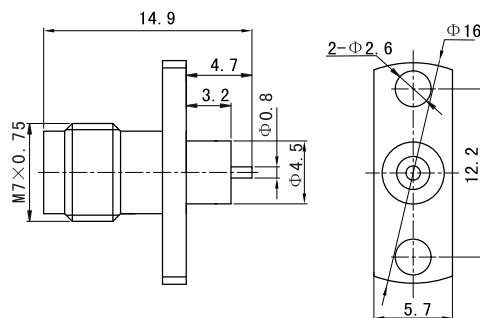
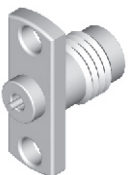
Part Number

2.4-MHF3



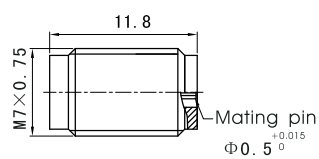
Part Number

2.4-MHF14



Part Number

2.4-MHF5

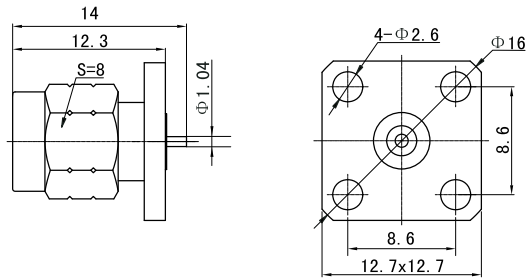
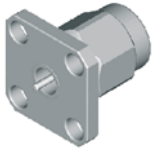


Part Number

2.4-MAF

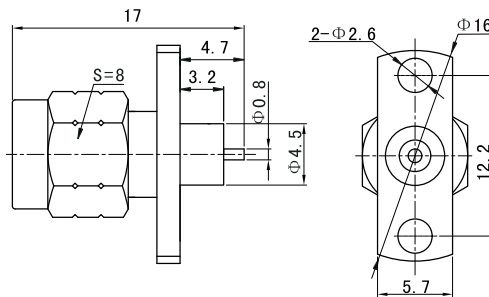
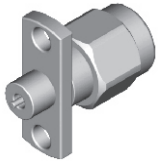


APMA



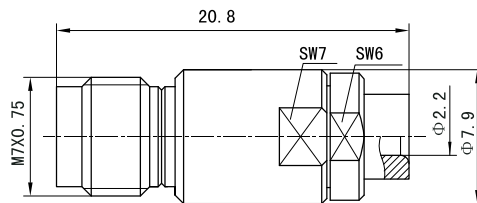
Part Number

2.4-LHF



Part Number

2.4-LHF2

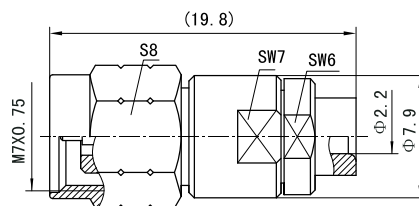


Part Number

2.4-MD2C

Suitable Cable

SFT-50-2-1
RG405/U

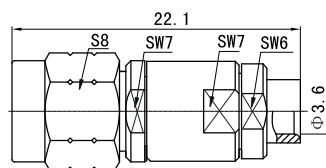


Part Number

2.4-LD2C

Suitable Cable

SFT-50-2-1
RG405/U



Part Number

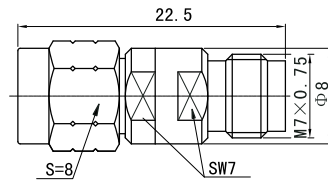
2.4-L717

Suitable Cable

717[#]

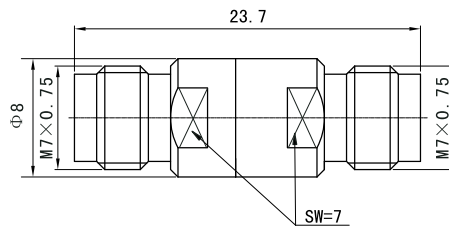


APMA



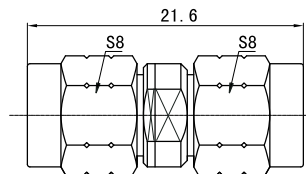
Part Number

2.4-LM



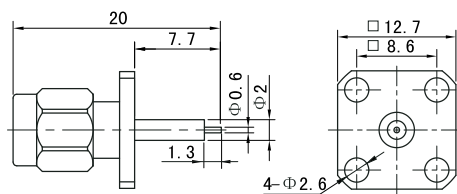
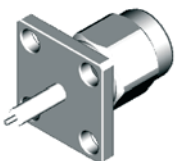
Part Number

2.4-MM



Part Number

2.4-LL



Part Number

2.4-LHF

Suitable Cable

1410-0000