

**MYG27 SERIES:**  
**METAL HOUSING**  
**WATERPROOF**  
**CIRCULAR ELECTRIC CONNECTOR CATALOGUE**



## BRIEF INTRODUCTION

- Performance comply with IEC-60130-9.
- Mainly used for AISG smart antenna.
- Thread locking coupling system.
- Metal housing, with EMI shielding function.
- Environment protection grade IP67.
- 8 types of contacts arrangement, from 3 cores to 8 cores.
- 3 types of termination: wire crimped, wire soldered and PCB soldered.
- 2 types of application: cable to cable, cable to board.



## APPLICATIONS

This series connector are mainly used for AISG smart antenna signal transmission, it also can be used in other fields for signal transmission which need waterproof environment.

## MAIN TECHNICAL CHARACTERISTICS

Electrical performances		Environmental performances	
Current rating	≤5A	Operating temperature	-40°C ~ +85°C
Withstanding voltage	1200V,RMS,60Hz	Vibration	10 ~ 500Hz,20m/s <sup>2</sup>
Insulation resistance	≥1000MΩ @100V DC	Salt spray	96h
Mechanical performances		Other performances	
Durability	500 cycles	Adaptive wire size	Standard #18~#26 AWG

## PART NUMBER DESCRIPTION

Series name	MYG27-	16	08	L	K	H	G	-01
Shell size	16							
Contact arrangement	03 ~ 08 ( see contact arrangement diagram )							
Structure type	Plug:	T - with pins	Z - with sockets					
	Receptacle:	F - square flange	L - jam nut					
Contact	Pin:	J1 - gold plating	J - silver plating					
	Socket:	K1 - gold plating	K - silver plating					
Termination	H - soldering							
Dust cap	Omit if no need							
Variations code	-01 -02 -03 ... ..							

### Part number examples:

MYG27 series 3 cores connector, plug loaded with gold plating pins, soldered termination, Then the plug P/N is: MYG27-1603TJH

Receptacle loaded with gold plating sockets, soldered termination, square flange mounting, Then the receptacle P/N is:

MYG27-1603FKH

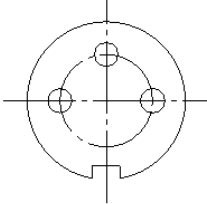
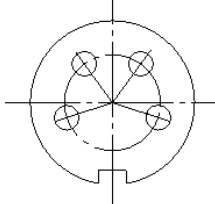
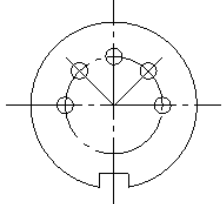
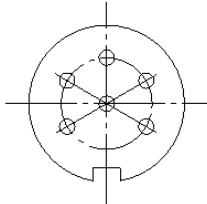
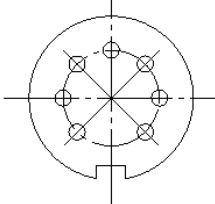
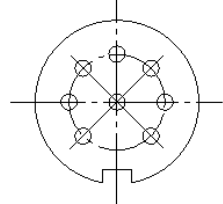
### Note:

If customer need special requirements(such as more poles contacts, different housing plating, with cable type, .....), pls consult our engineer, we can customize all kinds of special variations of this series.



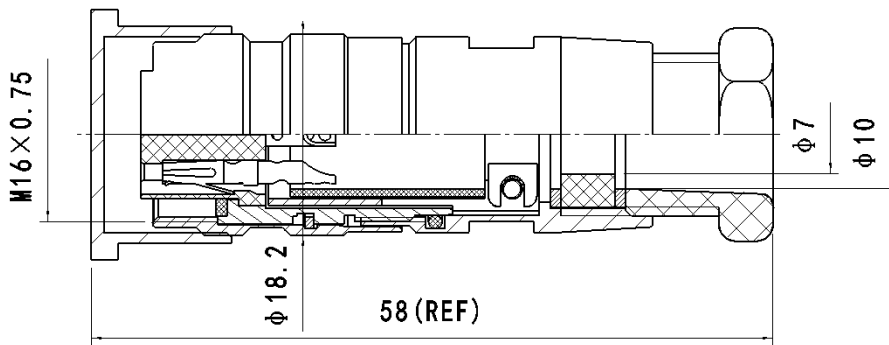
# APMA

## CONTACTS ARRANGEMENT (the mating view of insulator with pins)

03	04	05
		
06	07	08
		

## OUTLINE DIMENSIONS

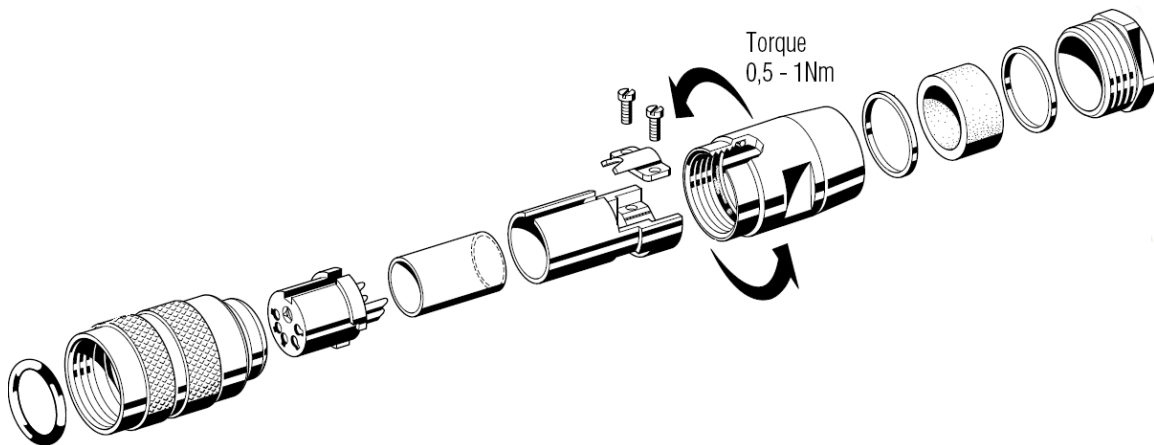
MYG27-16XXZKH



2D DRAWING



3D DRAWING

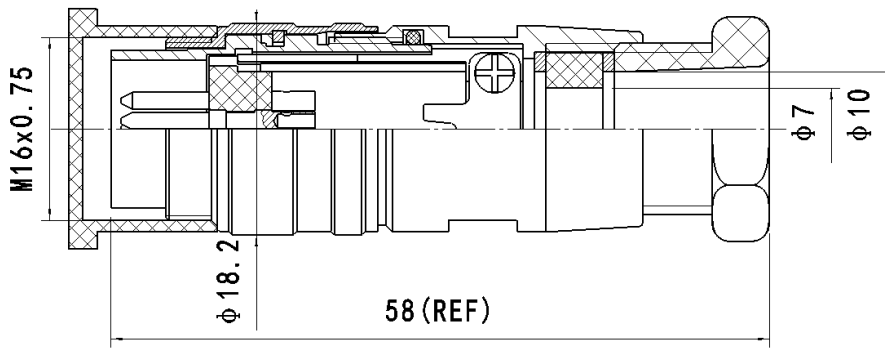


BREAKDOWN DRAWING



# APMA

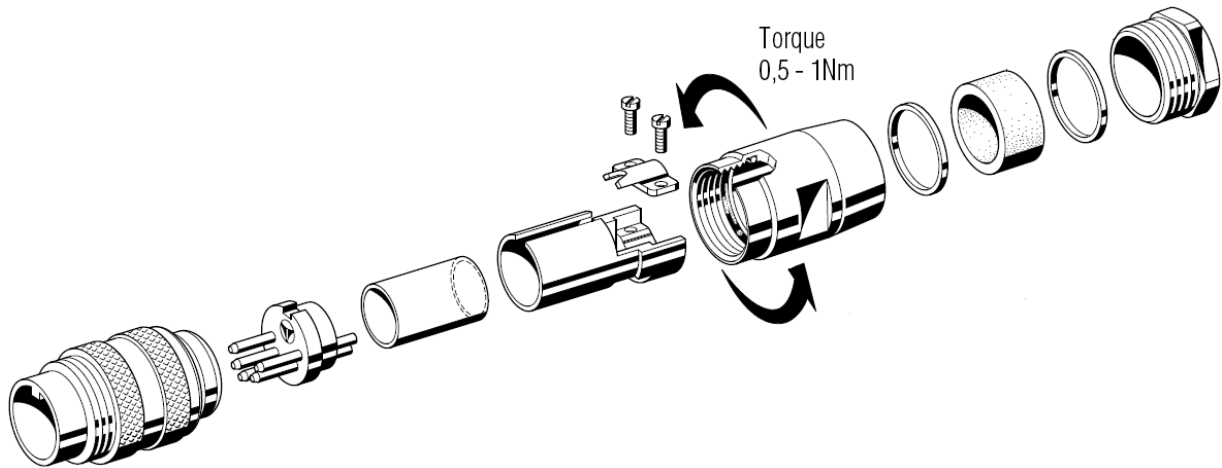
## MYG27-16XTJH



2D DRAWING

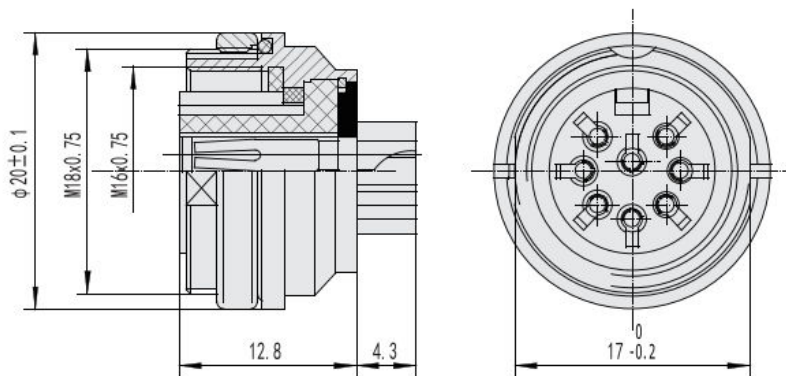


3D DRAWING

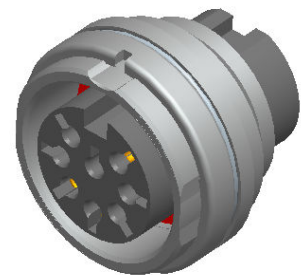


BREAKDOWN DRAWING

## MYG27-16XXLKH



2D DRAWING

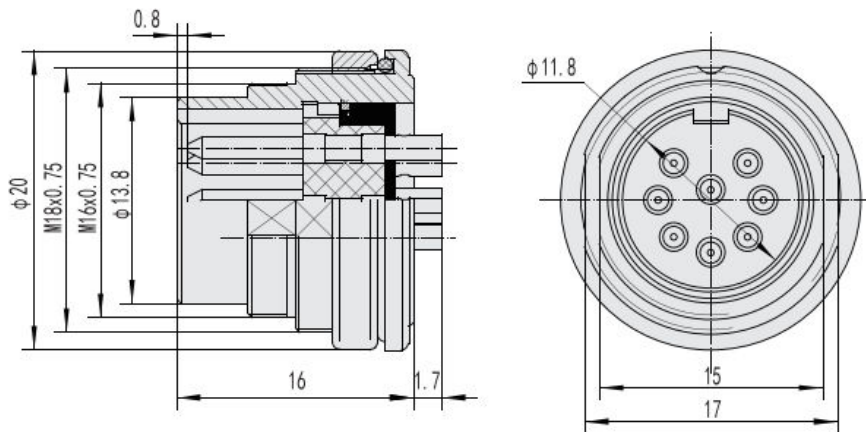


3D DRAWING

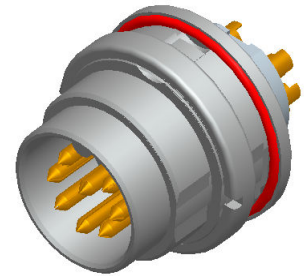


# APMA

## MYG27-16XXLJH

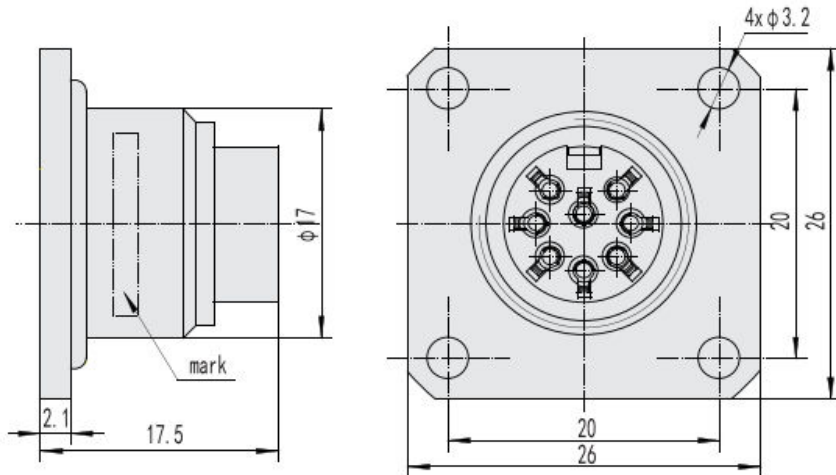


2D DRAWING

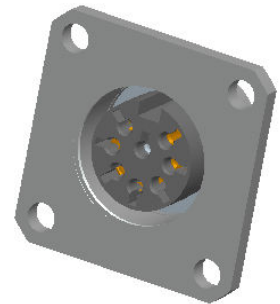


3D DRAWING

## MYG27-16XXFKH

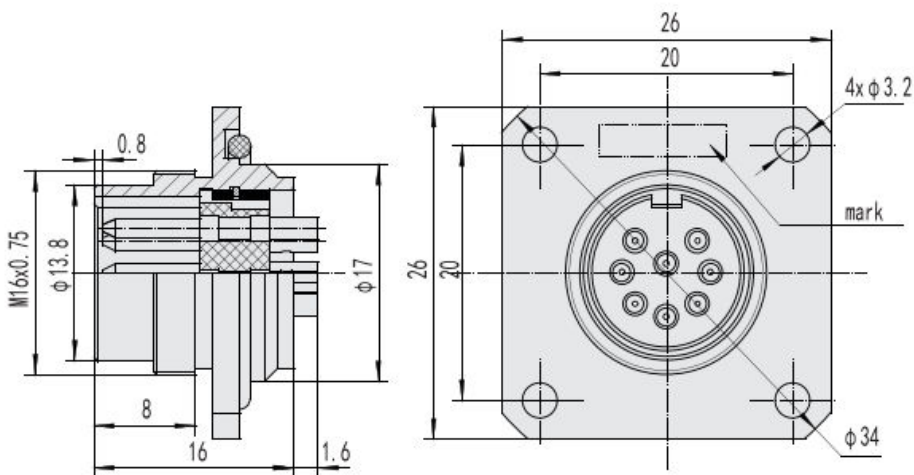


2D DRAWING

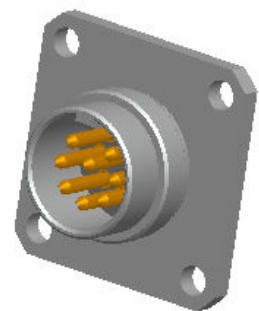


3D DRAWING

## MYG27-16XXFJH



2D DRAWING



3D DRAWING