

## UE/FUE Series Optical Fiber Connector & Adapter

### Description

- Push-pull design, quick connection and removal
- Standard plastic part, good interchangeability
- Axial locking design for reliable connection
- Ceramic ferrule, PC, UPC & APC polishing
- Available to OFNR and LSZH cable
- Cable O.D.:  $\varphi 0.9$ ,  $\varphi 2$ ,  $\varphi 3$
- Simplex /Double connector and adapter
- Ceramic sleeve, low insertion loss
- Applicable standard: YD/T1272.3, IEC61754-4

### Applications

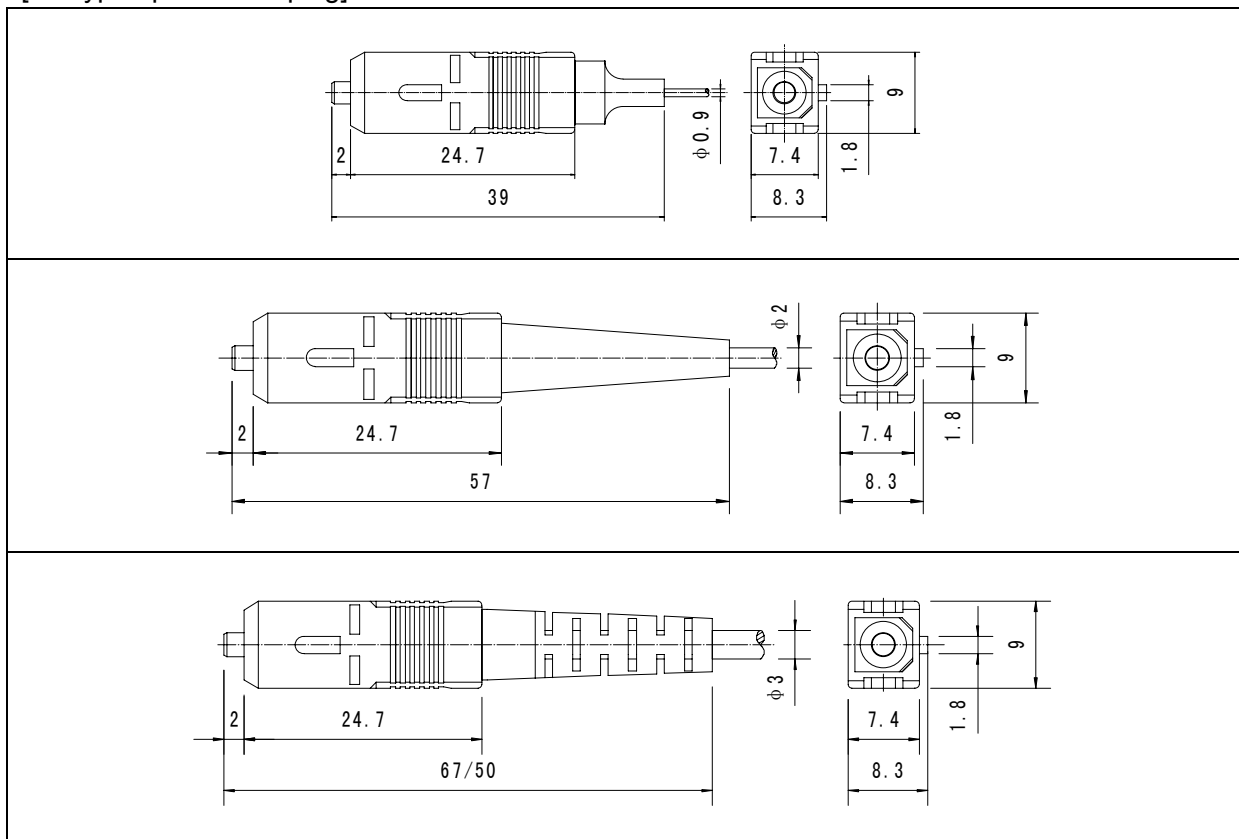
- Optical fiber communication networks
- Optical CATV
- Optical LAN

### Performance

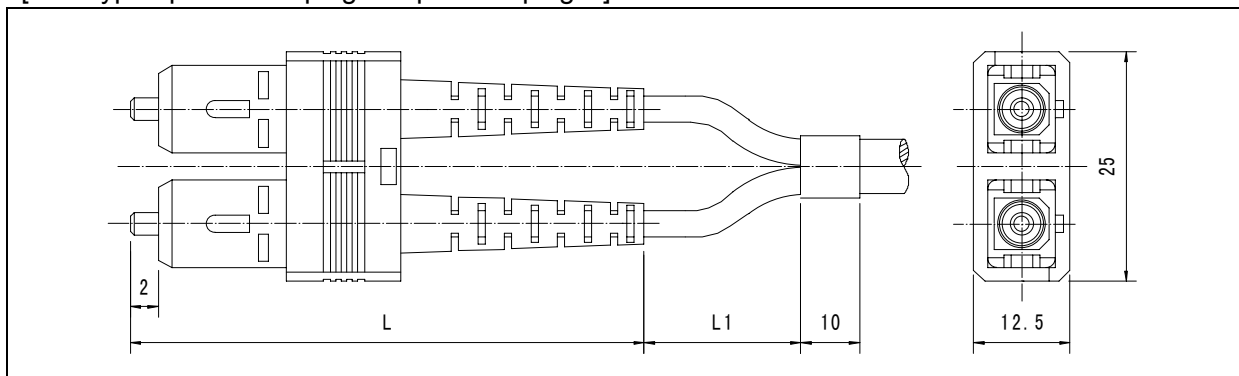
Parameter	Plug				Adapter
	SM			MM	
	PC	UPC	APC	PC	
Return Loss (dB)	$\geq 45$	$\geq 50$	$\geq 60$	$\geq 35$	/
Insertion Loss (dB)	$\leq 0.2$ (Typical value), $\leq 0.3$ (Maximum value)				$\leq 0.1$ (Typical value)
Repeatability (dB)	$\leq 0.1$				/
Durability (cycles)	$\geq 500$				$\geq 500$
Operating Temp. ( $^{\circ}\text{C}$ )	$-25 \sim +70$				$-25 \sim +70$
Tensile Strength (N)	$\geq 90$ ( $\varphi 3$ ), $\geq 70$ ( $\varphi 2$ ). The requirement is not applicable to $\varphi 0.9$				/

### Outline dimensions

[UE type optical fiber plug]

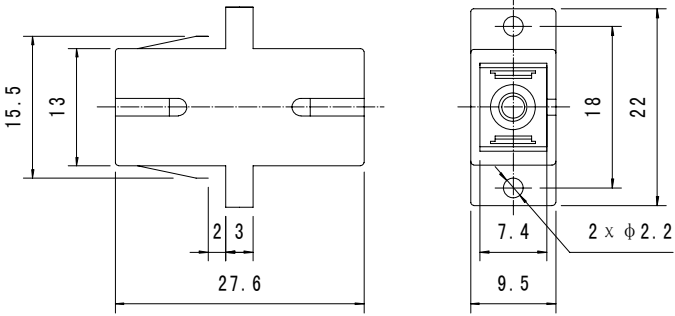
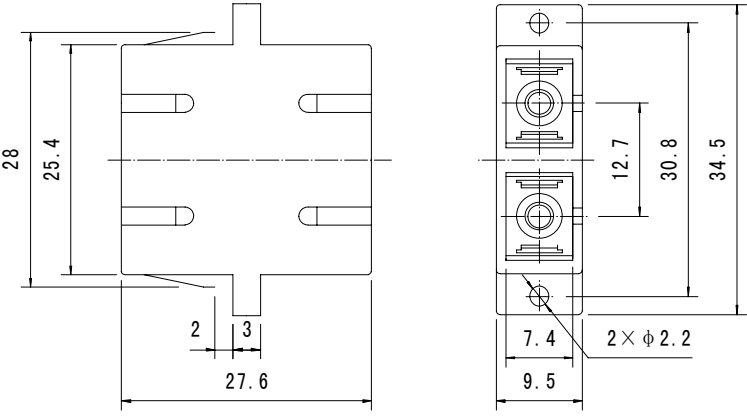


[FUE type optical fiber plug (duplex UE plug) ]



Diameter of cable	L
$\varphi 0.9$	39
$\varphi 2$	57
$\varphi 3$	67/50

Note: L1 is supplied according to customers' requirements

<p>UE type adapter (UE-A)</p>	 <p>Side view dimensions: 15.5, 13, 2, 3, 27.6</p> <p>Front view dimensions: 18, 22, 7.4, 9.5, 2 x φ 2.2</p>
<p>FUE type adapter (FUE-A)</p>	 <p>Side view dimensions: 28, 25.4, 2, 3, 27.6</p> <p>Front view dimensions: 12.7, 30.8, 34.5, 7.4, 9.5, 2 x φ 2.2</p>