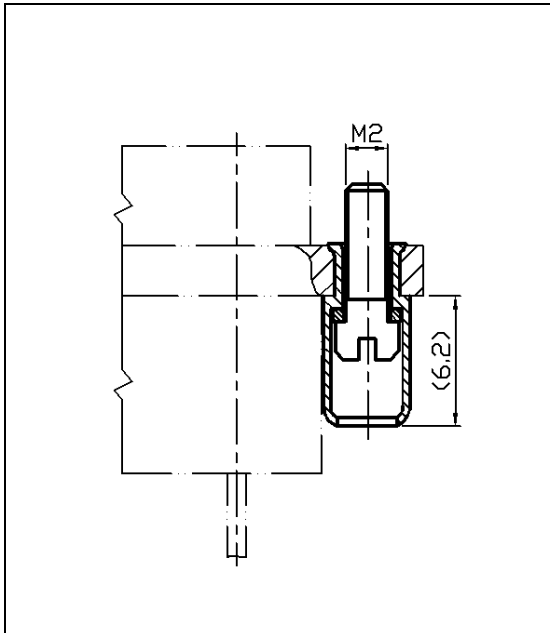
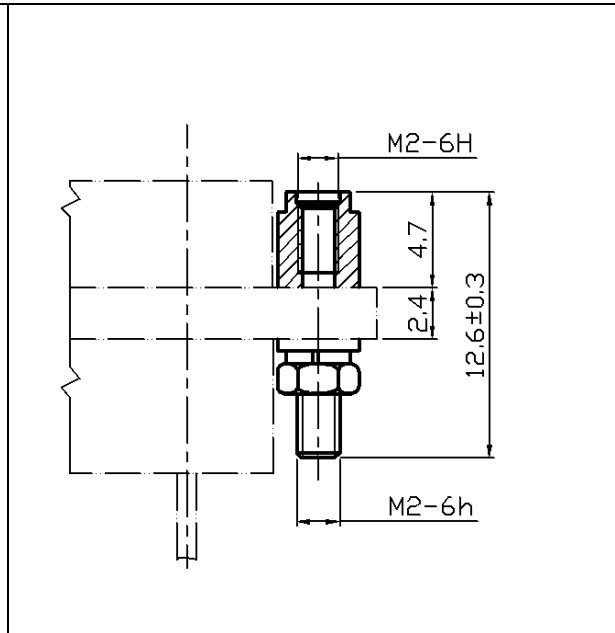


Locking accessory of connector

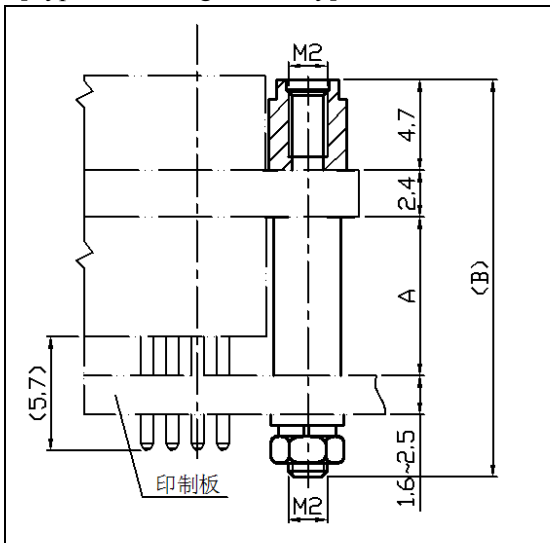
[Type L locking accessory]



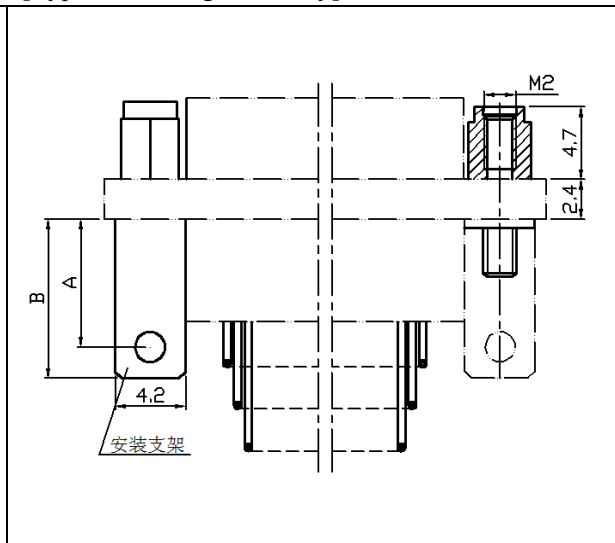
[Type P locking accessory]



[Type P5 locking accessory]



[Type P7 locking accessory]



Type of locking accessory	A		B		Type of locking accessory	B		A	
	Type C	Type II	Type C	Type II		Type C	Type II	Type C	Type II
P5	8.9	14	21.6	26.7	P7	9.6	14.7	7.7	12.8