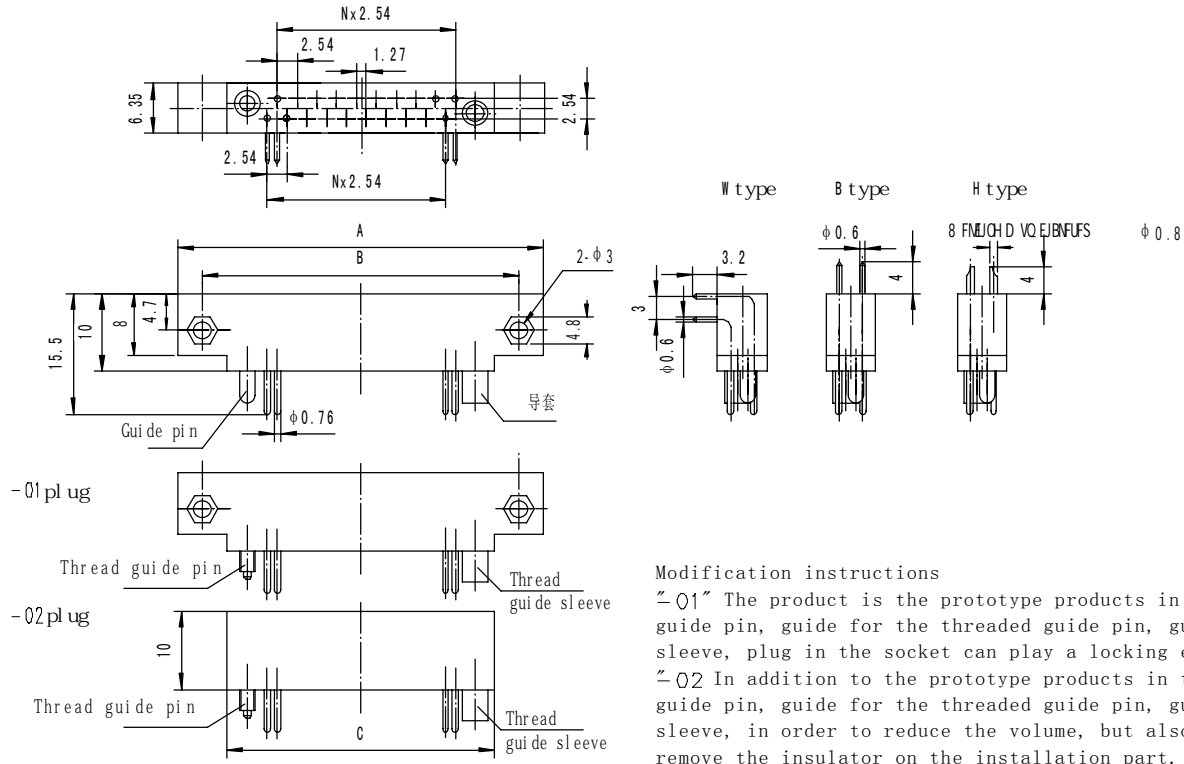


Outline dimensions

[2 rows of contacts]

Plug



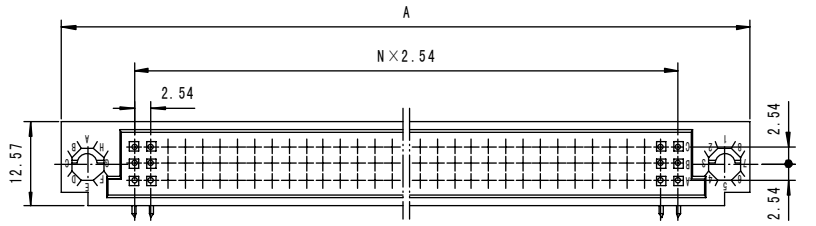
Note: EA3T60WJ-01 is different from“-01”in other products, the left is guide bushing, the right is guide pin.

Cores	Plug type	A	B	C	N
10	EA3T10WJ-01	34.5	27.94	21.6	4
20	EA3T20WJ	47.0	40.6	34.3	9
	EA3T20WJ-01				
	EA3T20BJ				
	EA3T20BJ-01				
36	EA3T20WJ-02	67.6	61.0	54.8	17
	EA3T20BJ-02				
	EA3T20HJ-02				
	EA3T36WJ				
	EA3T36WJ-01				
EA3T36WJ-02					
	EA3T36BJ-01				

	EA3T36BJ-02				
	EA3T36HJ-01				
	EA3T36HJ-02				

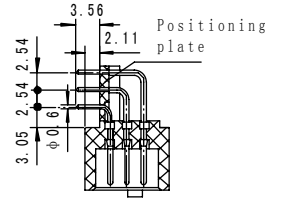
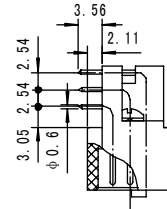
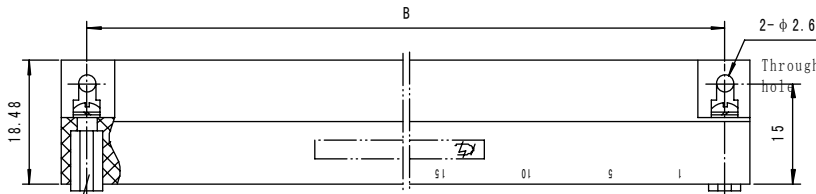
Cores	Plug type	A	B	C	N
44	EA3T44WJ	77.6	71.1	65.0	21
	EA3T44WJ-01				
	EA3T44WJ-02				
	EA3T44BJ-01				
	EA3T44BJ-02				

	EA3T44HJ-02				
54	EA3T54WJ	90.3	83.8	77.6	26
	EA3T54BJ-02				
	EA3T54WJ-02				
	EA3T54HJ				
60	EA3T60WJ	98.0	91.5	85.3	29
	EA3T60BJ				
	EA3T60HJ-01				
	EA3T60HJ				
66	EA3T66WJ	105.6	99.1	93.0	32
	EA3T66WJ-01				
	EA3T66WJ-02				
	EA3T66BJ-02				
	EA3T66HJ-02				



EA3T150WJ
EA3T210WJ

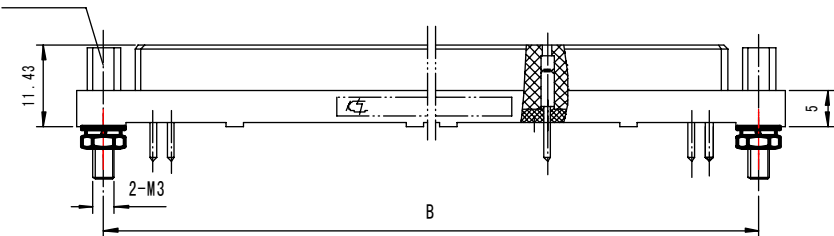
EA3T150WJ-03



Plug recognition kit

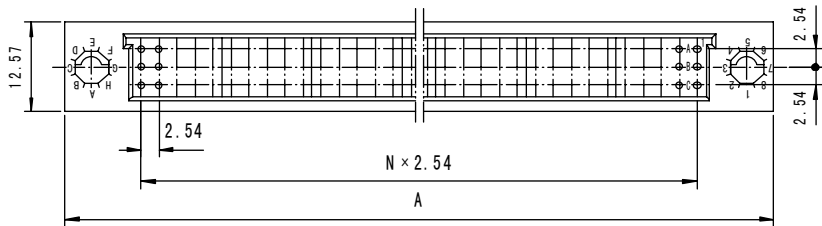
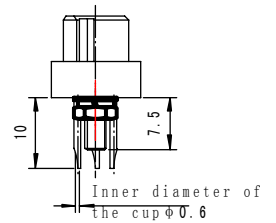
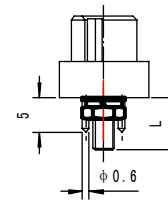
Receptacle EA3Z150BJ, EA3Z150BJ-03, EA3Z150HJ, EA3Z210BJ

Socket identification set



EA3Z150BJ
EA3Z150BJ-03
EA3Z210BJ

EA3Z150HJ



EA3Z150BJ	
EA3Z210BJ	L=7.5
EA3Z150BJ-03	L=11.5

Type	A	B	N
EA3-150	146.05	138.43	49
EA3-210	196.85	189.23	69

Note : The plug and receptacle with same cores can match arbitrarily.